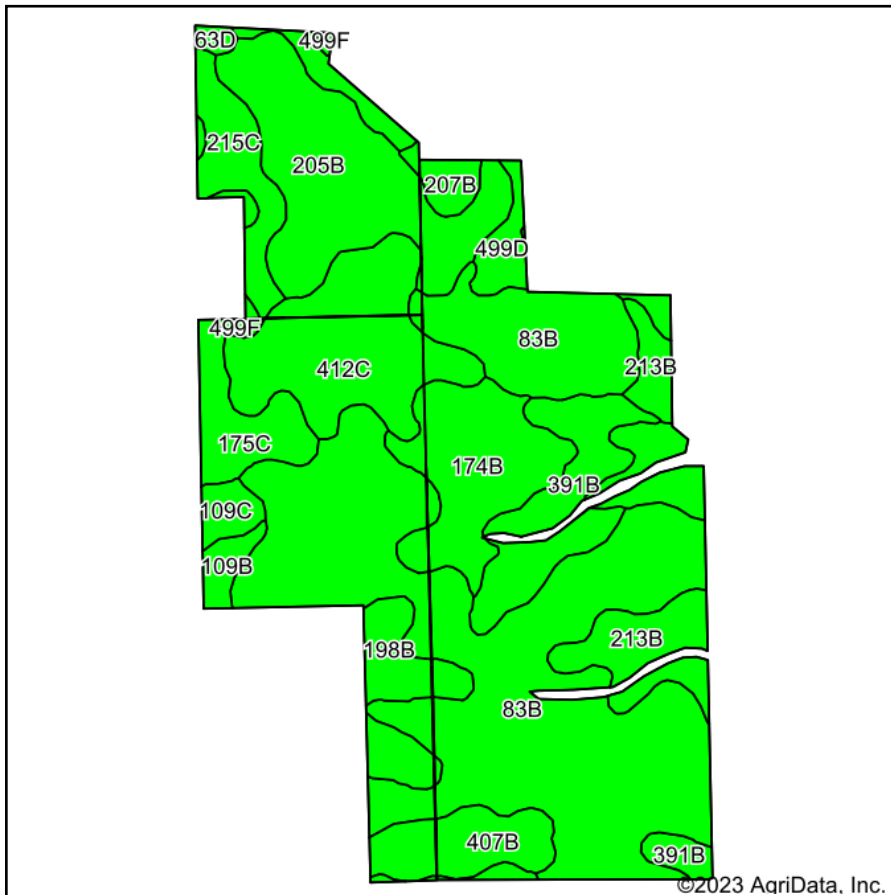
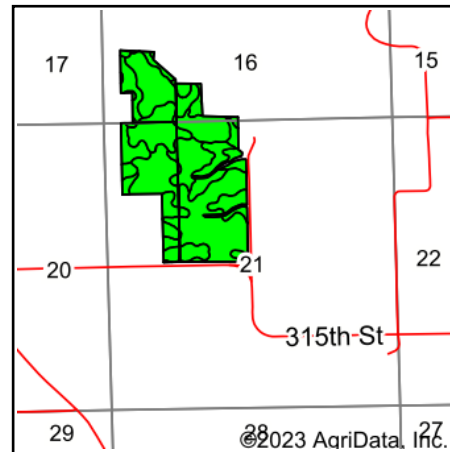


# Soils Map



Soils data provided by USDA and NRCS.



State: **Iowa**  
 County: **Delaware**  
 Location: **21-87N-4W**  
 Township: **Union**  
 Acres: **143.58**  
 Date: **9/23/2023**



Maps Provided By:



© AgriData, Inc. 2023

www.AgriDataInc.com



Area Symbol: IA055, Soil Area Version: 29

Code	Soil Description	Acres	Percent of field	CSR2 Legend	Non-Irr Class *c	CSR2**	CSR	*n NCCPI Overall	*n NCCPI Corn	*n NCCPI Small Grains	*n NCCPI Soybeans	
83B	Kenyon loam, 2 to 5 percent slopes	55.99	39.0%		Ile	90	86	87	86	66	71	
205B	Whalan loam, 30 to 40 inches to limestone, 2 to 5 percent slope	16.10	11.2%		Ile	40	64	69	69	66	57	
412C	Emeline loam, 2 to 9 percent slopes	13.40	9.3%		IVs	7	13	27	26	27	19	
174B	Bolan loam, 2 to 5 percent slopes	10.05	7.0%		Ils	64	70	81	81	64	70	
391B	Clyde-Floyd complex, 1 to 4 percent slopes	8.98	6.3%		Ilw	87	74	89	87	70	86	
499D	Nordness silt loam, 5 to 14 percent slopes	6.88	4.8%		VIIs	5	5	50	50	43	34	
213B	Rockton loam, 30 to 40 inches to limestone, 2 to 5 percent	6.62	4.6%		Ile	53	74	71	71	69	60	
407B	Schley loam, 1 to 4 percent slopes	5.00	3.5%		Ilw	81	71	93	93	75	84	
215C	Goss loam, 2 to 9 percent slopes	4.91	3.4%		IVs	34	20	64	64	61	53	
198B	Floyd loam, 1 to 4 percent slopes	4.89	3.4%		Ilw	89	75	88	83	63	88	
175C	Dickinson fine sandy loam, 5 to 9 percent slopes	4.55	3.2%		IIIe	45	40	60	60	52	36	
109C	Backbone fine sandy loam, 5 to 9 percent slopes	1.96	1.4%		IVs	31	15	58	58	49	43	
207B	Whalan loam, 20 to 30 inches to limestone, 2 to 5 percent slope	1.50	1.0%		Ile	38	48	60	60	60	44	
109B	Backbone fine sandy loam, 2 to 5 percent slopes	1.32	0.9%		IVs	36	25	59	59	49	43	
499F	Nordness silt loam, 14 to 25 percent slopes	0.96	0.7%		VIIIs	5	5	42	42	32	26	
63D	Chelsea loamy fine sand, 9 to 14 percent slopes	0.47	0.3%		VIIs	5	11	30	30	28	27	
<b>Weighted Average</b>						<b>2.57</b>	<b>62.5</b>	<b>63.1</b>	<b>*n 73.8</b>	<b>*n 73</b>	<b>*n 60.3</b>	<b>*n 61.1</b>

\*\*IA has updated the CSR values for each county to CSR2.

\*n: The aggregation method is "Weighted Average using all components"

\*c: Using Capabilities Class Dominant Condition Aggregation Method

Soils data provided by USDA and NRCS.