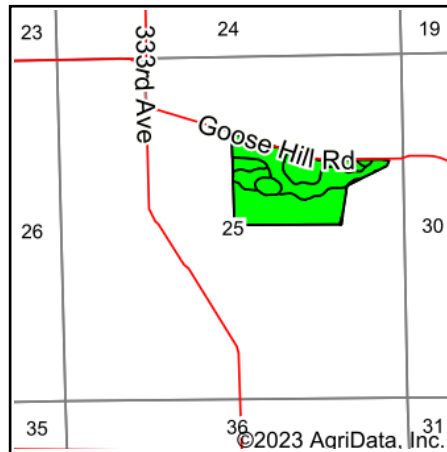
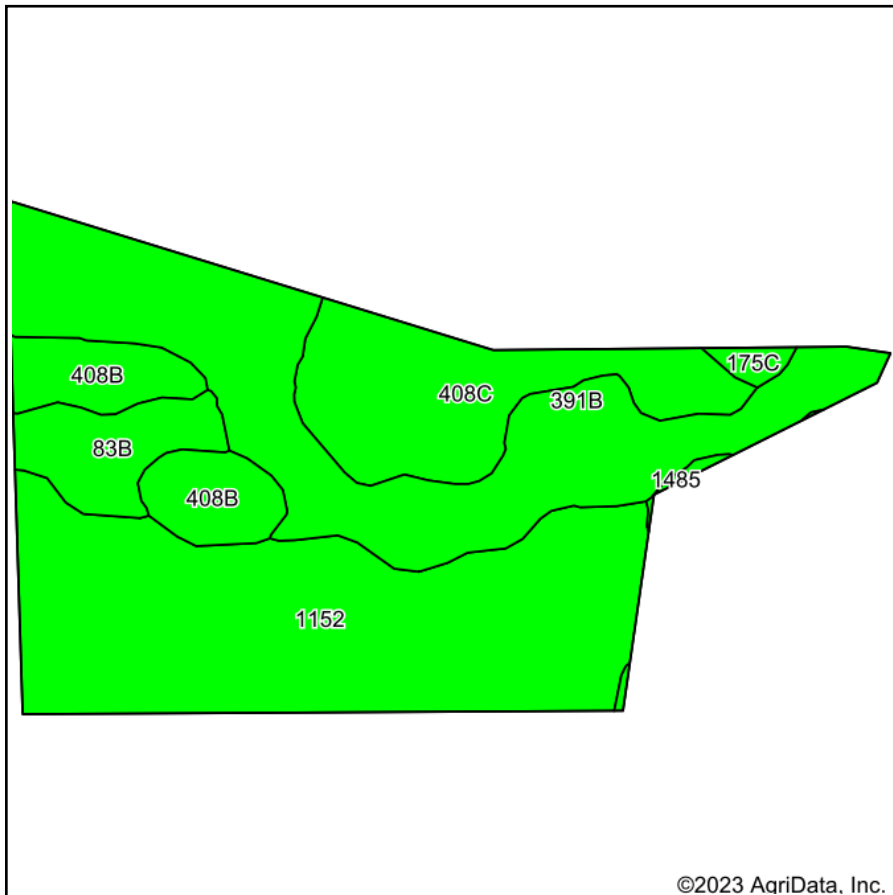


# Soils Map



State: **Iowa**  
 County: **Delaware**  
 Location: **25-87N-3W**  
 Township: **South Fork**  
 Acres: **49.41**  
 Date: **9/18/2023**



Maps Provided By:



Soils data provided by USDA and NRCS.

©2023 AgriData, Inc.

© AgriData, Inc. 2023

www.AgriDataInc.com

Area Symbol: IA055, Soil Area Version: 29

Code	Soil Description	Acres	Percent of field	CSR2 Legend	Non-Irr Class *c	CSR2**	CSR	*n NCCPI Overall	*n NCCPI Corn	*n NCCPI Small Grains	*n NCCPI Soybeans	
1152	Marshan clay loam, 0 to 2 percent slopes, rarely flooded	19.46	39.4%		llw	54	68	81	81	65	60	
391B	Clyde-Floyd complex, 1 to 4 percent slopes	15.25	30.9%		llw	87	74	89	87	70	86	
408C	Olin sandy loam, 5 to 9 percent slopes	7.30	14.8%		lle	59	53	70	70	51	55	
408B	Olin sandy loam, 2 to 5 percent slopes	3.97	8.0%		lle	64	68	71	71	51	57	
83B	Kenyon loam, 2 to 5 percent slopes	2.84	5.7%		lle	90	86	87	86	66	71	
175C	Dickinson fine sandy loam, 5 to 9 percent slopes	0.39	0.8%		llle	45	40	60	60	52	36	
1485	Spillville loam, channeled, 0 to 2 percent slopes	0.20	0.4%		Vw	41	25	59	59	32	49	
<b>Weighted Average</b>						<b>2.02</b>	<b>67.7</b>	<b>68.3</b>	<b>*n 81.1</b>	<b>*n 80.5</b>	<b>*n 63.2</b>	<b>*n 67.4</b>

\*\*IA has updated the CSR values for each county to CSR2.

\*n: The aggregation method is "Weighted Average using all components"

\*c: Using Capabilities Class Dominant Condition Aggregation Method

Soils data provided by USDA and NRCS.