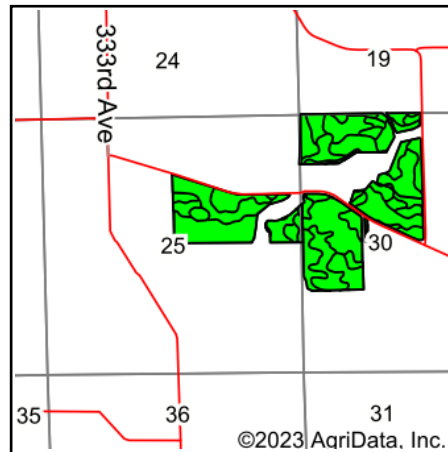
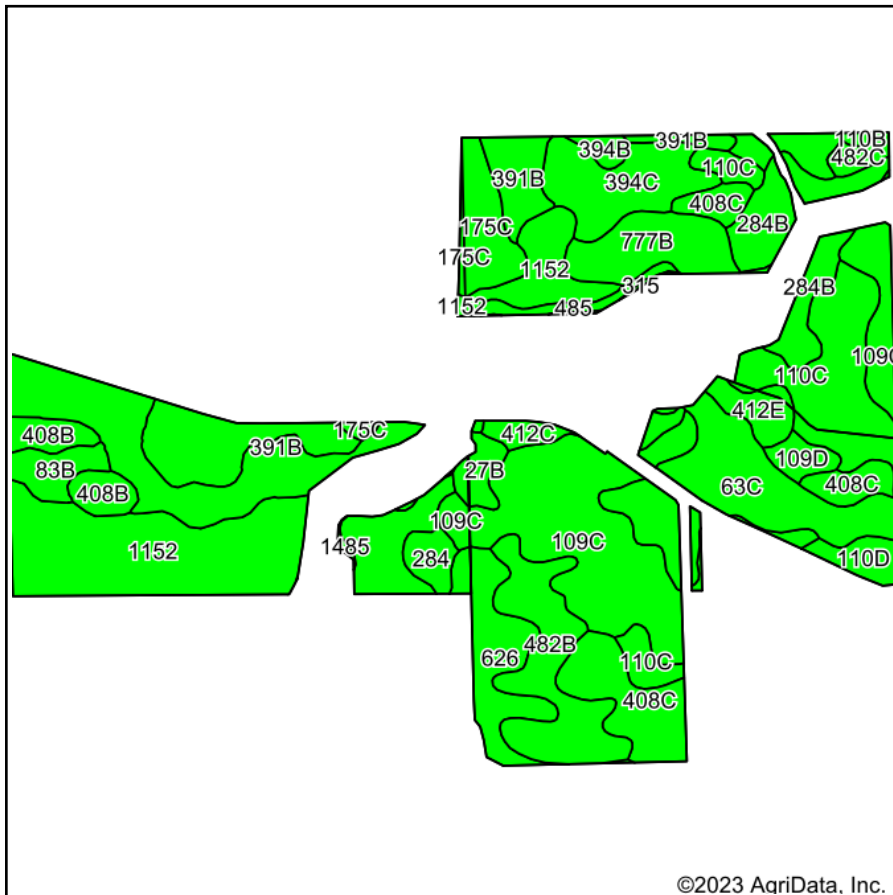


Soils Map



State: **Iowa**
 County: **Delaware**
 Location: **25-87N-3W**
 Township: **South Fork**
 Acres: **194.26**
 Date: **8/3/2023**



Maps Provided By:



Soils data provided by USDA and NRCS.

Area Symbol: IA055, Soil Area Version: 29
 Area Symbol: IA061, Soil Area Version: 24

Code	Soil Description	Acres	Percent of field	CSR2 Legend	Non-Irr Class *c	CSR2**	CSR	*n NCCPI Overall	*n NCCPI Corn	*n NCCPI Small Grains	*n NCCPI Soybeans	*n NCCPI Cotton
109C	Backbone fine sandy loam, 5 to 9 percent slopes	24.76	12.7%		IVs	31	15	58	58	49	43	
1152	Marshan clay loam, 0 to 2 percent slopes, rarely flooded	19.39	10.0%		IIw	54	68	81	81	65	60	
110C	Lamont fine sandy loam, 5 to 9 percent slopes	14.95	7.7%		IIIe	47	32	67	67	61	50	
391B	Clyde-Floyd complex, 1 to 4 percent slopes	14.57	7.5%		IIw	87	74	89	87	70	86	
63C	Chelsea loamy fine sand, 5 to 9 percent slopes	14.33	7.4%		IVs	14	21	32	32	30	29	
482B	Racine loam, 2 to 5 percent slopes	10.79	5.6%		IIe	76	81	65	65	46	55	
408C	Olin sandy loam, 5 to 9 percent slopes	10.69	5.5%		IIe	59	53	70	70	51	55	
394C	Ostrander loam, 5 to 9 percent slopes	10.52	5.4%		IIIe	83	71	74	74	69	64	
284B	Flagler sandy loam, 2 to 5 percent slopes	8.18	4.2%		IIIe	51	45	61	61	53	35	
408C	Olin sandy loam, 5 to 9 percent slopes	7.22	3.7%		IIe	59	53	70	70	51	55	
626	Hayfield loam, 0 to 2 percent slopes, rarely flooded	6.96	3.6%		IIIs	53	72	81	81	68	55	1
777B	Wapsie loam, 2 to 7 percent slopes	6.74	3.5%		IIe	42	46	65	65	59	41	
626	Hayfield loam, 0 to 2 percent slopes, rarely flooded	5.53	2.8%		IIIs	53	67	81	81	68	55	1
1152	Marshan clay loam, 0 to 2 percent slopes, rarely flooded	4.94	2.5%		IIw	54	68	81	81	65	60	

175C	Dickinson fine sandy loam, 5 to 12 percent slopes	4.68	2.4%		Ille	29	37	53	53	49	30	
391B	Clyde-Floyd complex, 1 to 4 percent slopes	4.36	2.2%		Ilw	87	72	89	87	70	86	
408B	Olin sandy loam, 2 to 5 percent slopes	3.96	2.0%		Ile	64	68	71	71	51	57	
83B	Kenyon loam, 2 to 5 percent slopes	2.83	1.5%		Ile	90	86	87	86	66	71	
412E	Emeline loam, 9 to 18 percent slopes	2.78	1.4%		Vis	5		24	23	24	16	
110D	Lamont fine sandy loam, 9 to 14 percent slopes	2.22	1.1%		IVe	22	22	64	64	58	46	
412C	Sogn loam, 2 to 9 percent slopes	1.97	1.0%		IVs	5	20	34	34	29	24	
284	Flagler fine sandy loam, 0 to 2 percent slopes	1.93	1.0%		Ills	56	50	63	63	53	37	
109D	Backbone fine sandy loam, 9 to 14 percent slopes	1.68	0.9%		Vis	5	5	53	53	45	39	
27B	Terril loam, 2 to 5 percent slopes	1.53	0.8%		Ile	89	83	96	96	69	88	
485	Spillville loam, 0 to 2 percent slopes, occasionally flooded	1.46	0.8%		Ilw	76	93	87	87	51	74	
482C	Racine loam, 5 to 9 percent slopes	1.21	0.6%		Ille	75	66	88	88	74	76	
109C	Backbone fine sandy loam, 5 to 9 percent slopes	1.04	0.5%		IVs	31	15	58	58	49	43	
394B	Ostrander loam, 2 to 5 percent slopes	0.95	0.5%		Ile	88	86	75	75	69	66	
175C	Dickinson fine sandy loam, 5 to 9 percent slopes	0.81	0.4%		Ille	45	40	60	60	52	36	
323B	Fort Dodge loam, 2 to 5 percent slopes	0.44	0.2%		Ile	79	72	95	95	67	81	
110B	Lamont fine sandy loam, 2 to 5 percent slopes	0.34	0.2%		Ille	52	48	67	67	61	50	
315	Udifluents, loamy, 0 to 2 percent slopes	0.27	0.1%		Vw	5	5	22	13	22	9	
1485	Spillville loam, channeled, 0 to 2 percent slopes	0.23	0.1%		Vw	41	25	59	59	32	49	
Weighted Average					2.78	52.1	*-	*n 67.6	*n 67.4	*n 55.7	*n 52.8	*n 0.1

**IA has updated the CSR values for each county to CSR2.

*- CSR weighted average cannot be calculated on the current soils data, use prior data version for csr values.

*n: The aggregation method is "Weighted Average using all components"

*c: Using Capabilities Class Dominant Condition Aggregation Method

Soils data provided by USDA and NRCS.