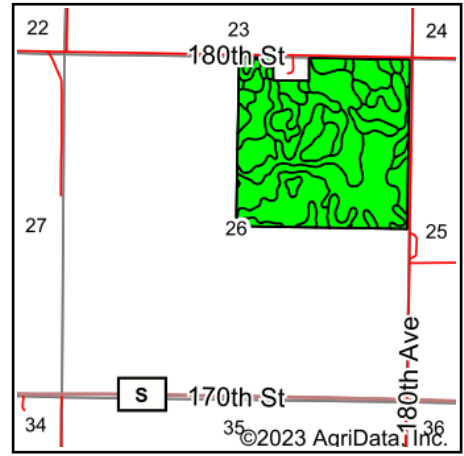
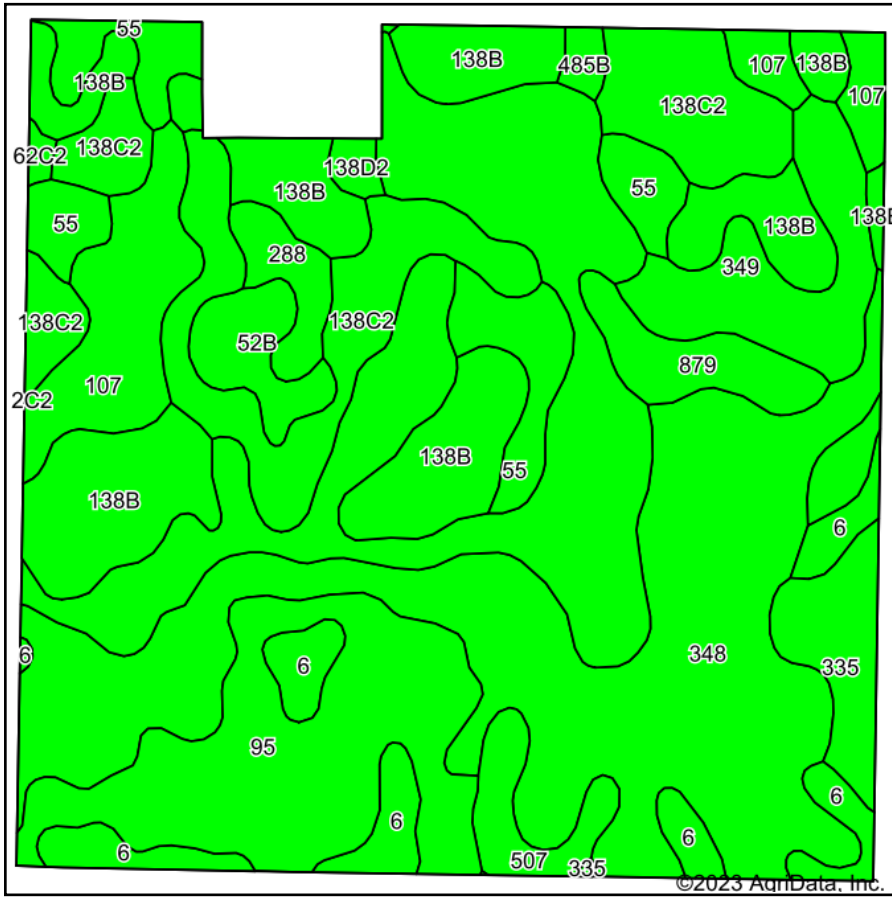


Soils Map



State: **Iowa**
 County: **Kossuth**
 Location: **26-95N-28W**
 Township: **Irvington**
 Acres: **151.55**
 Date: **8/24/2023**



HIGH POINT
 LAND COMPANY

Maps Provided By:



© AgriData, Inc. 2023

www.AgriDataInc.com



Soils data provided by USDA and NRCS.

Area Symbol: IA109, Soil Area Version: 29

Code	Soil Description	Acres	Percent of field	CSR2 Legend	Non-Irr Class *c	CSR2**	CSR	*n NCCPI Overall	*n NCCPI Corn	*n NCCPI Small Grains	*n NCCPI Soybeans
348	Fieldon loam, 0 to 2 percent slopes	33.55	22.1%		llw	54	68	63	63	46	57
107	Webster clay loam, 0 to 2 percent slopes	31.23	20.6%		llw	86	80	82	78	60	82
138B	Clarion loam, 2 to 6 percent slopes	19.55	12.9%		lle	89	77	83	78	62	83
138C2	Clarion loam, 6 to 10 percent slopes, moderately eroded	15.75	10.4%		llle	83	62	70	68	52	70
95	Harps clay loam, 0 to 2 percent slopes	14.95	9.9%		llw	72	60	82	70	54	82
55	Nicollet clay loam, 1 to 3 percent slopes	7.59	5.0%		lw	89	85	81	81	64	81
6	Okoboji silty clay loam, 0 to 1 percent slopes	6.49	4.3%		lllw	59	54	76	74	64	74
349	Darfur loam, 0 to 2 percent slopes	6.31	4.2%		llw	74	71	80	80	59	74
335	Harcot loam, 0 to 2 percent slopes	4.56	3.0%		llw	39	52	65	65	52	57
879	Fostoria loam, 0 to 2 percent slopes	3.13	2.1%		lw	95	85	80	80	59	75
52B	Bode clay loam, 2 to 6 percent slopes	2.67	1.8%		lle	91	75	81	79	60	81
507	Canisteo clay loam, 0 to 2 percent slopes	2.34	1.5%		llw	84	75	81	71	56	81
288	Ottosen clay loam, 1 to 3 percent slopes	1.98	1.3%		le	91	78	80	79	62	78
485B	Spillville loam, 2 to 5 percent slopes	0.60	0.4%		lle	88	77	89	87	68	87
138D2	Clarion loam, 9 to 14 percent slopes, moderately eroded	0.57	0.4%		llle	51	52	68	68	50	56
62C2	Storden loam, 6 to 10 percent slopes, moderately eroded	0.28	0.2%		llle	64	49	68	64	49	68

Weighted Average	2.07	74.8	70.8	*n 75.6	*n 72.5	*n 55.7	*n 73.5
-------------------------	-------------	-------------	-------------	----------------	----------------	----------------	----------------

**IA has updated the CSR values for each county to CSR2.
*n: The aggregation method is "Weighted Average using all components"
*c: Using Capabilities Class Dominant Condition Aggregation Method
Soils data provided by USDA and NRCS.