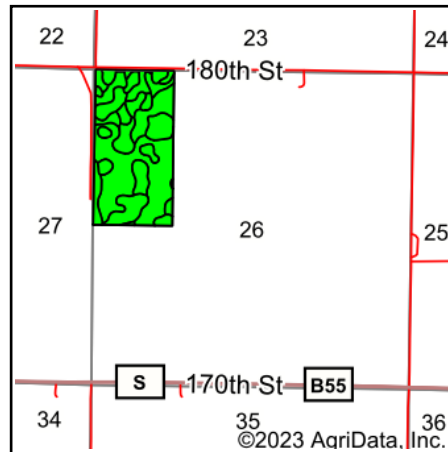
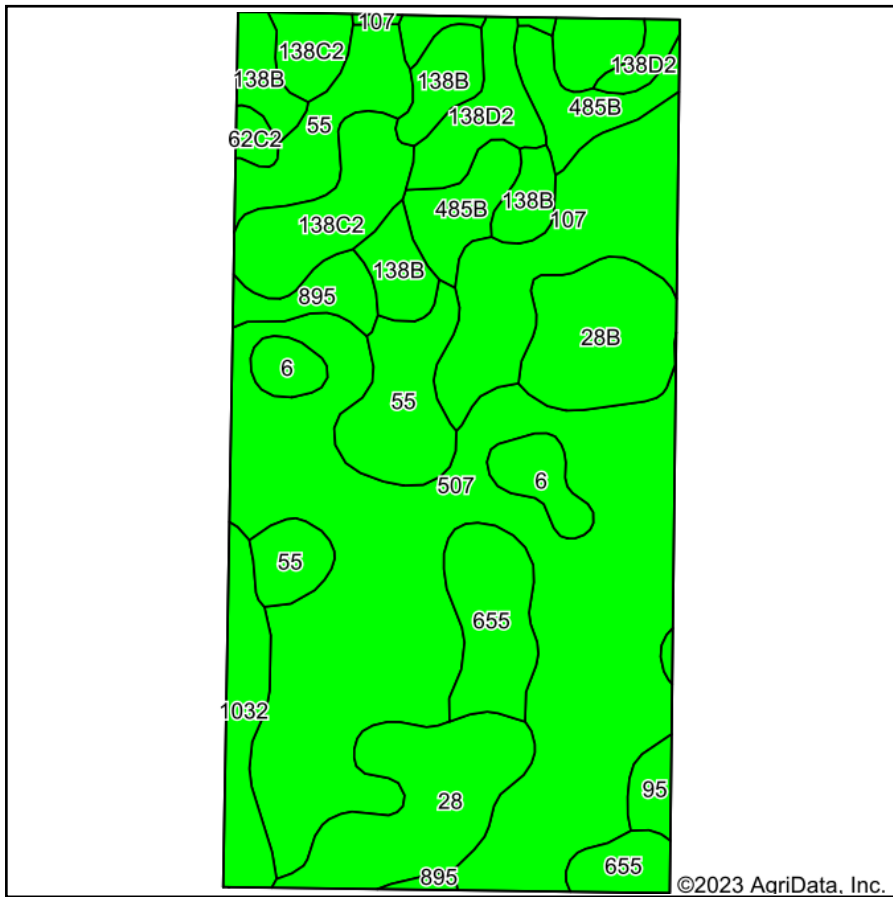


Soils Map



State: **Iowa**
 County: **Kossuth**
 Location: **26-95N-28W**
 Township: **Irvington**
 Acres: **78.06**
 Date: **8/24/2023**



Maps Provided By:



Soils data provided by USDA and NRCS.

Area Symbol: IA109, Soil Area Version: 29

Code	Soil Description	Acres	Percent of field	CSR2 Legend	Non-Irr Class *c	CSR2**	CSR	*n NCCPI Overall	*n NCCPI Corn	*n NCCPI Small Grains	*n NCCPI Soybeans
507	Canisteo clay loam, 0 to 2 percent slopes	28.71	36.8%		llw	84	75	81	71	56	81
55	Nicollet clay loam, 1 to 3 percent slopes	6.86	8.8%		lw	89	85	81	81	64	81
107	Webster clay loam, 0 to 2 percent slopes	6.34	8.1%		llw	86	80	82	78	60	82
138C2	Clarion loam, 6 to 10 percent slopes, moderately eroded	5.73	7.3%		llle	83	62	70	68	52	70
28	Dickman sandy loam, 0 to 2 percent slopes	5.03	6.4%		llls	24	39	53	53	42	36
138B	Clarion loam, 2 to 6 percent slopes	4.28	5.5%		lle	89	77	83	78	62	83
655	Crippin loam, 1 to 3 percent slopes	3.98	5.1%		le	91	80	86	71	59	86
28B	Dickman sandy loam, 2 to 6 percent slopes	3.94	5.0%		llle	20	34	52	52	41	35
485B	Spillville loam, 2 to 5 percent slopes	3.49	4.5%		lle	88	77	89	87	68	87
138D2	Clarion loam, 9 to 14 percent slopes, moderately eroded	2.61	3.3%		llle	51	52	68	68	50	56
1032	Spicer silty clay loam, 0 to 2 percent slopes	2.56	3.3%		llw	91	72	88	70	58	87
6	Okoboji silty clay loam, 0 to 1 percent slopes	1.89	2.4%		lllw	59	54	76	74	64	74
895	Lemond loam, 0 to 2 percent slopes	1.45	1.9%		llw	54	51	60	60	42	52
95	Harps clay loam, 0 to 2 percent slopes	0.79	1.0%		llw	72	60	82	70	54	82
62C2	Storden loam, 6 to 10 percent slopes, moderately eroded	0.40	0.5%		llle	64	49	68	64	49	68



Weighted Average	2.11	76	69.3	*n 77	*n 70.9	*n 55.8	*n 74.3
-------------------------	-------------	-----------	-------------	--------------	----------------	----------------	----------------

**IA has updated the CSR values for each county to CSR2.
*n: The aggregation method is "Weighted Average using all components"
*c: Using Capabilities Class Dominant Condition Aggregation Method
Soils data provided by USDA and NRCS.