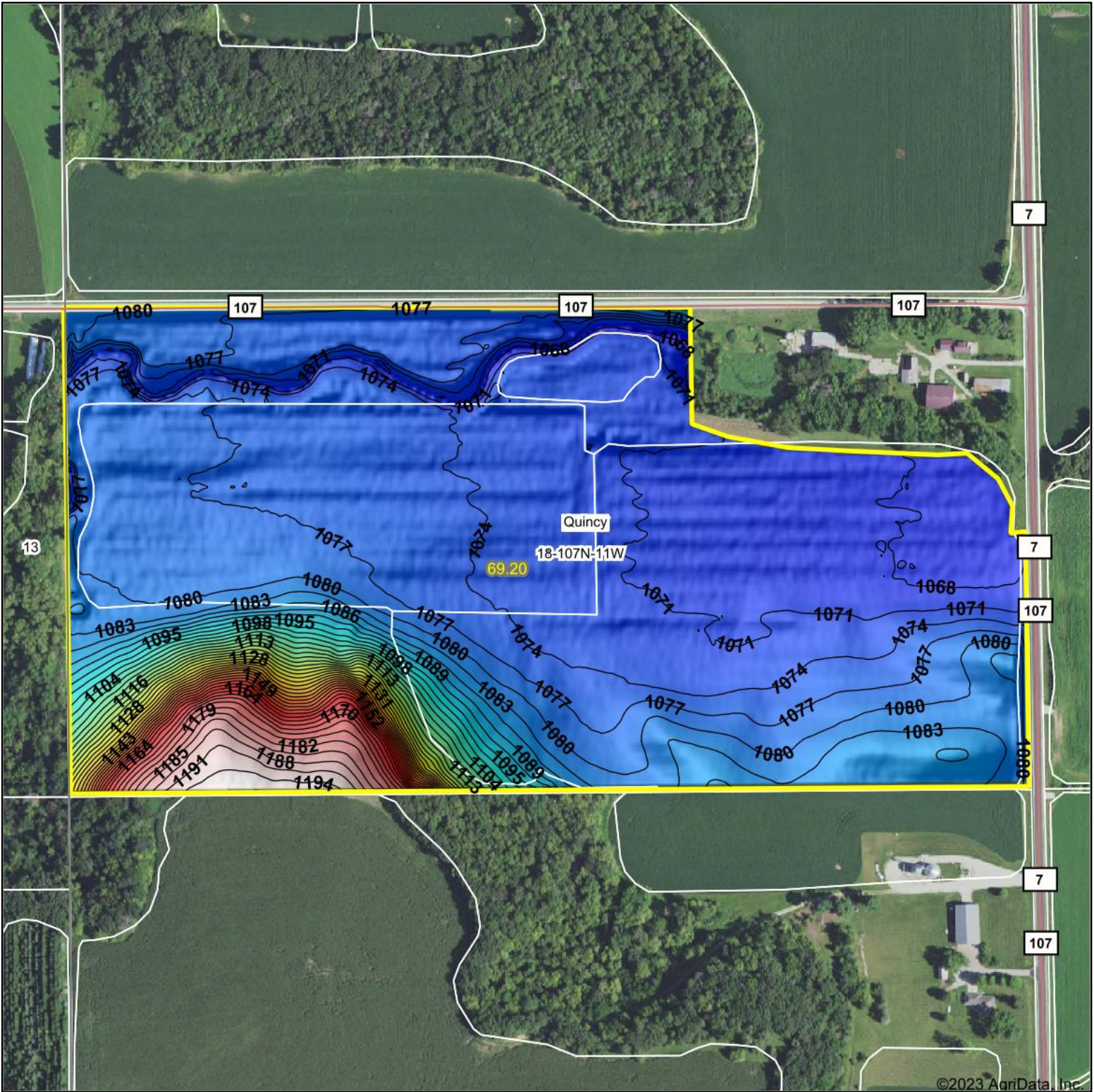
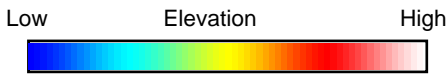


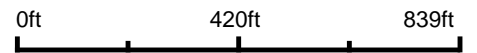
# Topography Hillshade



©2023 AgriData, Inc.



Source: USGS 3 meter dem



Interval(ft): 3

Min: 1,065.1

Max: 1,196.0

Range: 130.9

Average: 1,085.3

Standard Deviation: 27.56 ft



9/29/2023

**18-107N-11W**  
**Olmsted County**  
**Minnesota**

Boundary Center: 44° 4' 23.04, -92° 11' 39.63



Maps Provided By:



© AgriData, Inc. 2023 www.AgriDataInc.com

Field borders provided by Farm Service Agency as of 5/21/2008.