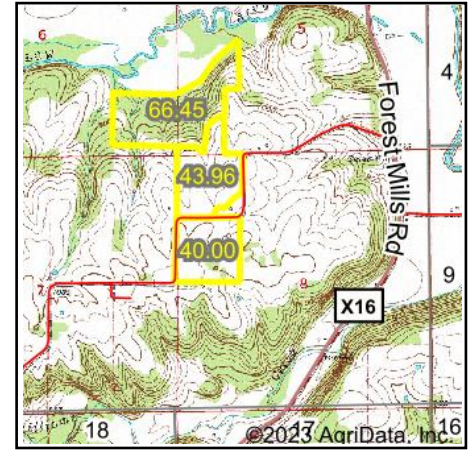
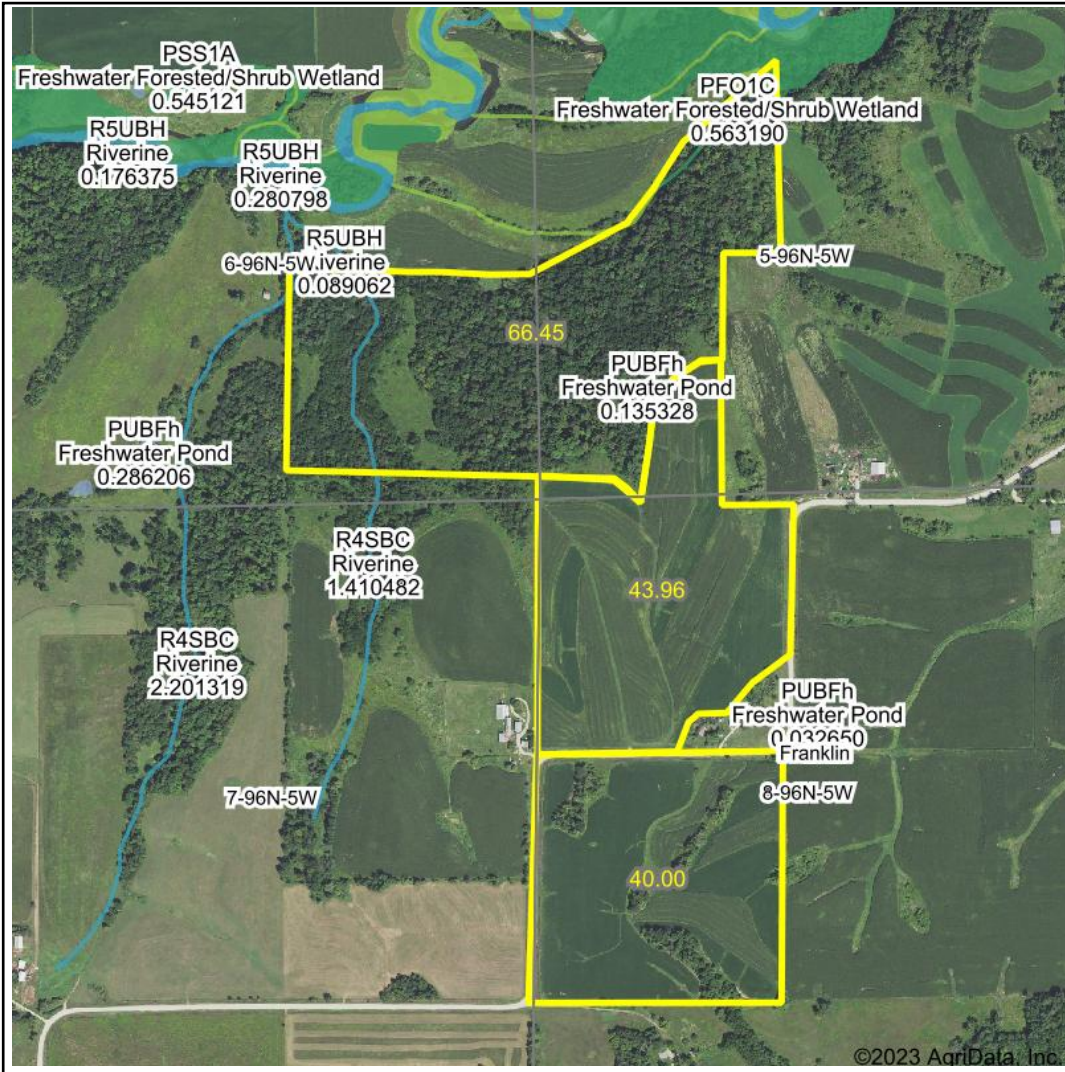


Wetlands Map



State: Iowa
Location: 8-96N-5W
County: Allamakee
Township: Franklin
Date: 10/5/2023



Maps Provided By:
 **surety**
 CUSTOMIZED ONLINE MAPPING
 © AgriData, Inc. 2023 www.AgriDataInc.com



0ft 1164ft 2328ft

Classification Code	Type	Acres
R4SBC	Riverine	0.60
PFO1C	Freshwater Forested/Shrub Wetland	0.36
PEM1A	Freshwater Emergent Wetland	0.30
PEM1C	Freshwater Emergent Wetland	0.15
PUBFh	Freshwater Pond	0.14
PFO1A	Freshwater Forested/Shrub Wetland	0.09
Total Acres		1.64

Data Source: National Wetlands Inventory website. U.S. DoI, Fish and Wildlife Service, Washington, D.C. <http://www.fws.gov/wetlands/>