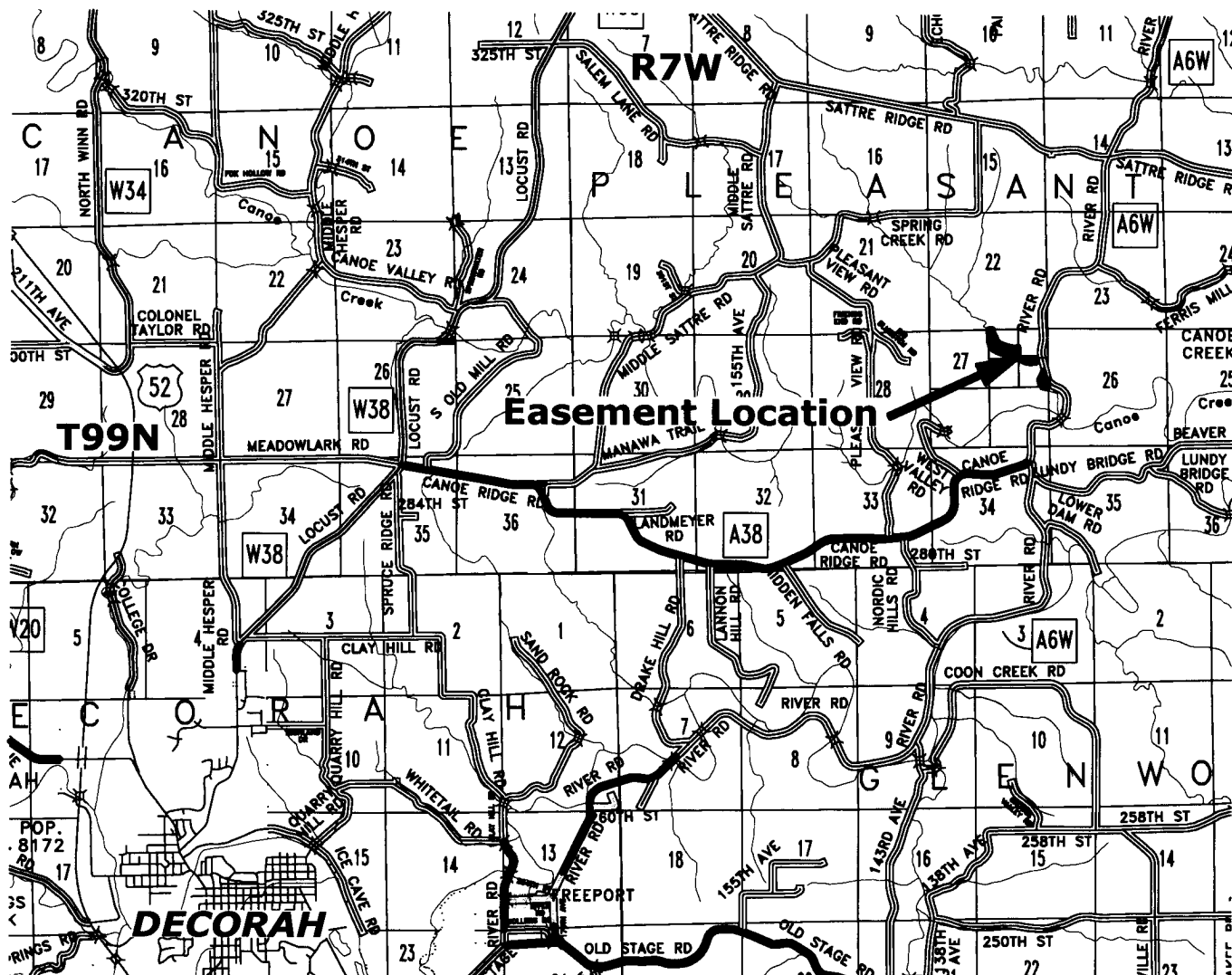


LAVONNE BJERGUM, COUNTY RECORDER
WINNESHIEK IOWA

Prepared by: Herold - Reicks Surveying, 10 East Main Street, New Hampton, IA 50659, Ph. 641-394-2725, Fax. 641-394-2718

Plat of Survey

NRCS Wetland Easements located in the NE 1/4 Section 27 - T99N - R7W, Winneshiek County, Iowa.



Map Not to Scale

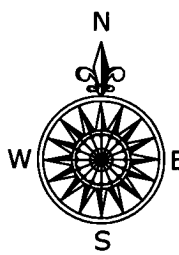
Map Courtesy of the Iowa Department of Transportation
<http://www.iowadotmaps.com/msp/index.html>

NRCS Contract Number
75-6114-0-0269

NRCS Wetland Easements
Easement #1 Area = 18.71 Acres
Easement #2 Area = 3.99 Acres

The Coordinate Basis for this survey and the subsequent Basis of Bearing is the Iowa State Plane Coordinate System North Zone (1401) Horizontal Control NAD 83 (1996), Vertical Control NAVD88 (Geoid 96) Control was acquired by localizing into the Winneshiek County GPS Control System utilizing Points 130, 138, 3222, and 3229 and projecting from the cross of 130-3229 & 138-3222, Scale factor 1.000022318 applied. Projection Point Northing = 3966061.1661 / Easting = 5416036.8400

Notes:
See Sheet 2 for Section Details.
See Sheet 3 for Road Alignment and Right-of-Way Details.
See Sheet 4 & 5 for NRCS Easement Details.
See Sheet 6 for Ingress-Egress Easement Details.
See Sheet 7 for NRCS Wetland Easement Descriptions.
See Sheet 8 for Ingress-Egress Easement Description.
See Sheet 9 for Geomatics Report.



LEGEND	
	= Section Corner Found
	= Section Corner Set
	= Set 5/8"Ø Rebar w/RPC 15525
	= Fd. 1/2"Ø Rebar w/YPC PLS 11442
RPC, YPC, OPC	= Red, Yellow or Orange Plastic Cap
	= Survey Boundary Line
	= NRCS Point Number

Proprietor: Douglas C. Johnson and Barbara A. Johnson	FB: Winneshiek Co. 2 Pg. 4	IMR	Project Number: 2010-075
Requested By: Natural Resources Conservation Service	Survey was completed on July 13, 2010.		Sheet: 1

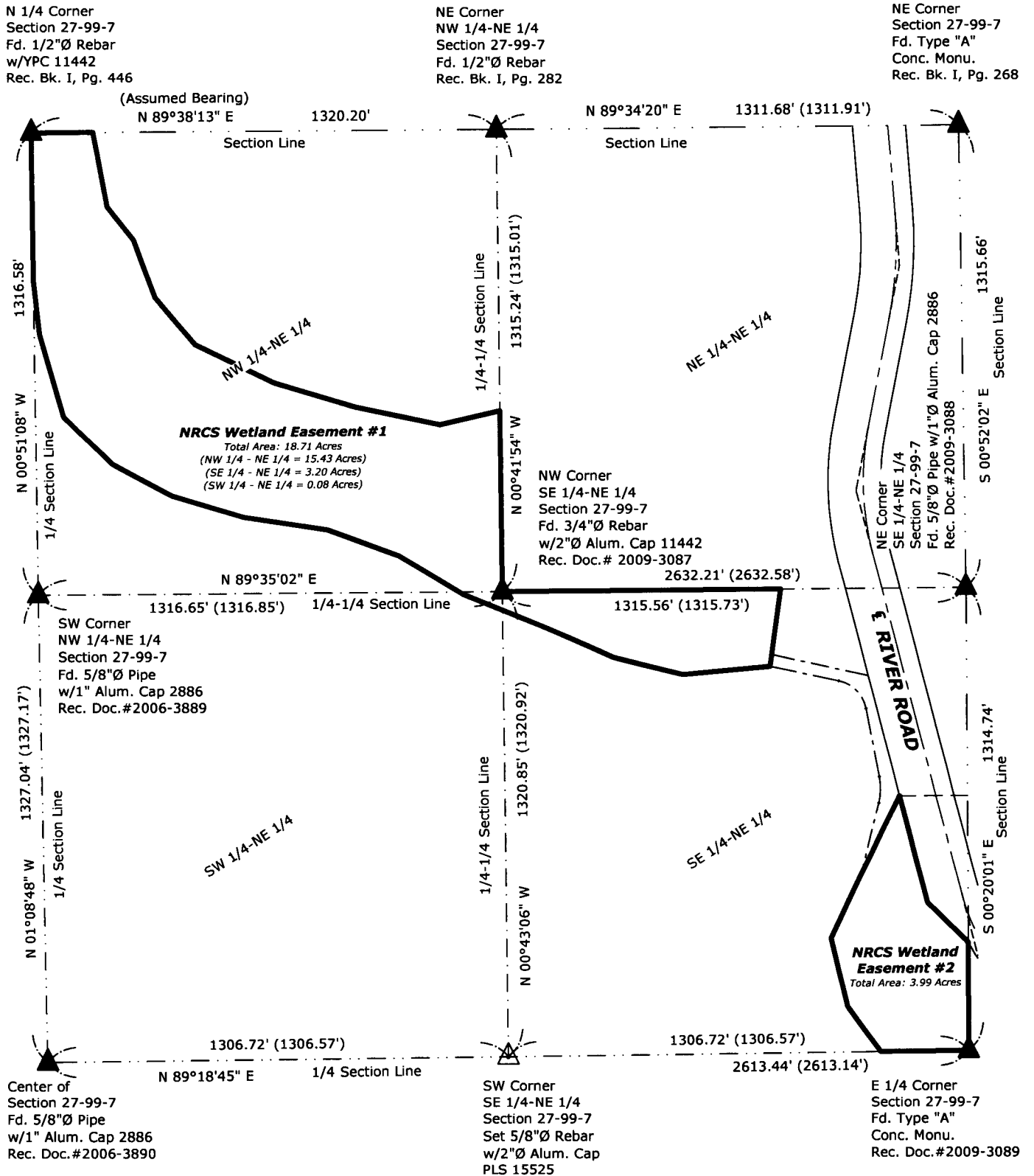


I hereby certify that this land surveying document was prepared and the related survey work was performed by me or under my direct personal supervision and that I am a duly licensed Land Surveyor under the laws of the State of Iowa.

Paul R. Herold 7-30-10
Paul R. Herold Date:
License number 15525
My license renewal date is December 31, 2010.
Sheets covered by this seal: 1-9

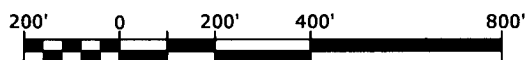
File: S:_Projects\2010-075\dwg\2010-075.dwg, 7/30/2010 11:38:12

NRCS Wetland Easements located in the NE 1/4 Section 27 - T99N - R7W, Winneshiek County, Iowa.



NRCS Wetland Easements
Easement #1 Area = 18.71 Acres
Easement #2 Area = 3.99 Acres

NRCS Contract Number
75-6114-0-0269



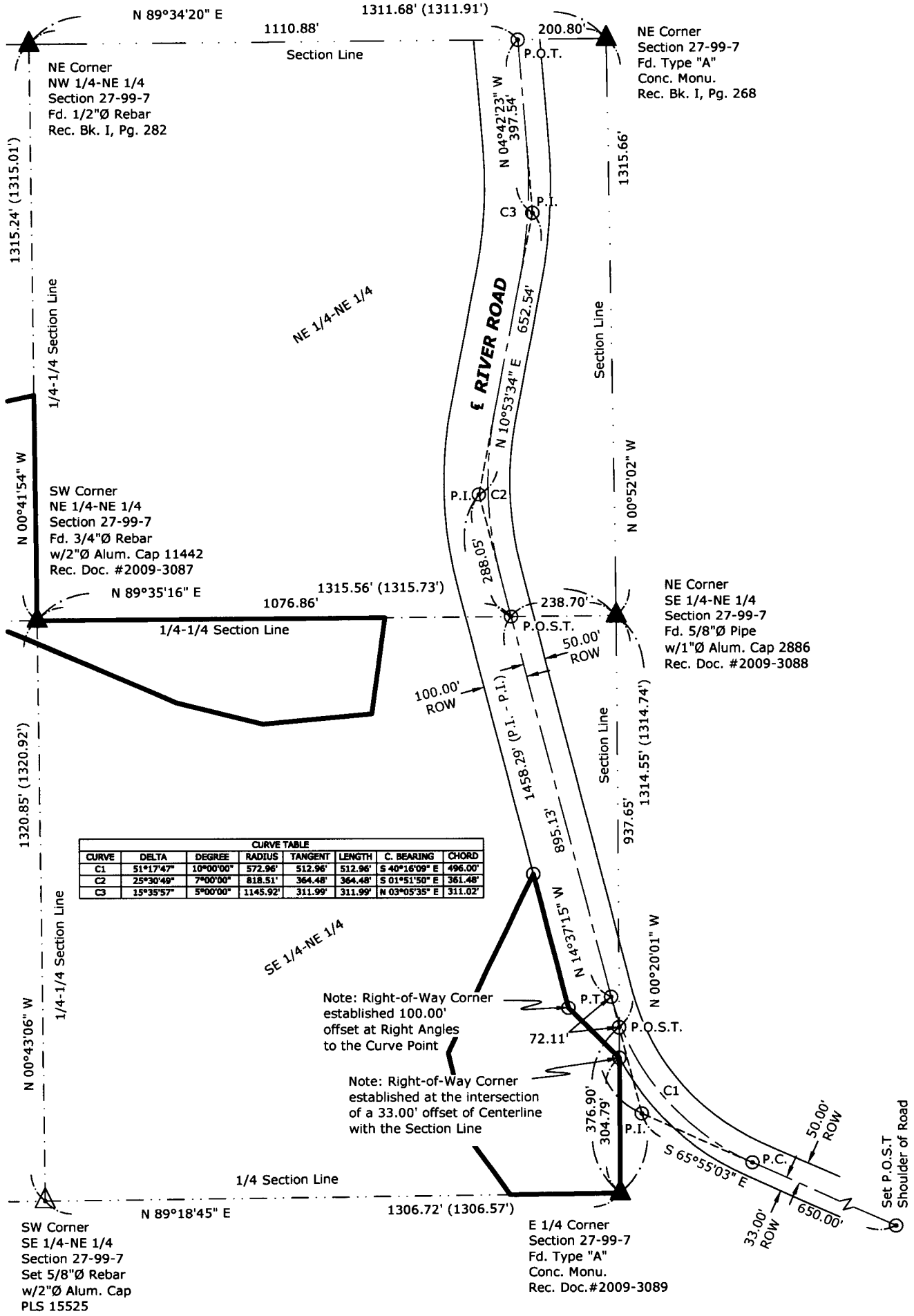
Scale - 1 inch = 400 ft.



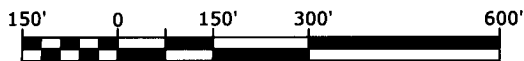
- Notes:**
 See Sheet 1 for Location Map.
 See Sheet 3 for Road Alignment and Right-of-Way Details.
 See Sheet 4 & 5 for NRCS Easement Details.
 See Sheet 6 for Ingress-Egress Easement Details.
 See Sheet 7 for NRCS Wetland Easement Descriptions.
 See Sheet 8 for Ingress-Egress Easement Description.
 See Sheet 9 for Geomatics Report.

Plat of Survey

NRCS Wetland Easements located in the NE 1/4 Section 27 - T99N - R7W, Winneshiek County, Iowa.



**NRCS Contract Number
75-6114-0-0269**



Scale - 1 inch = 300 ft.



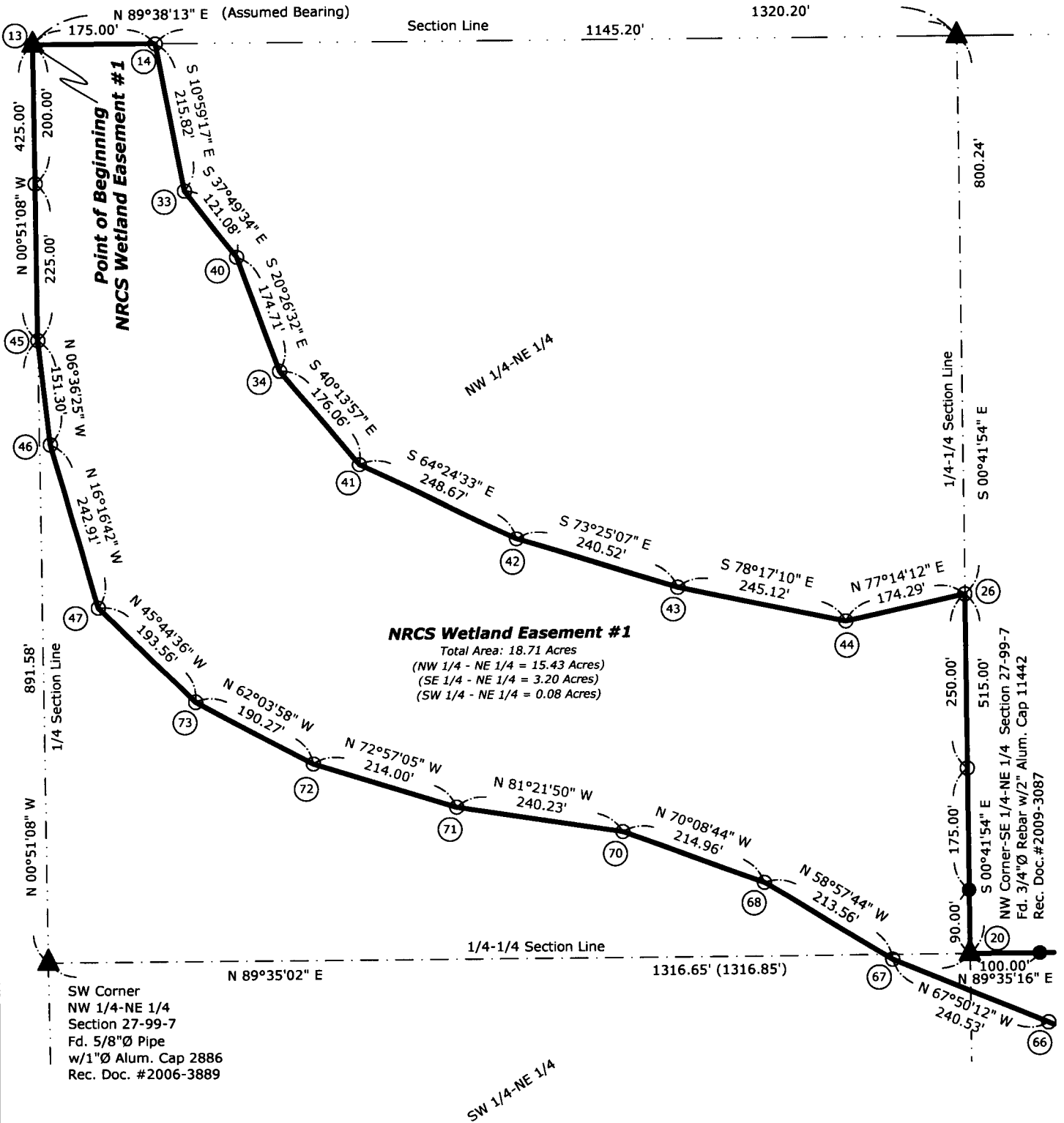
Notes:

- See Sheet 1 for Location Map.
- See Sheet 2 for Section Details.
- See Sheet 4 & 5 for NRCS Easement Details.
- See Sheet 6 for Ingress-Egress Easement Details.
- See Sheet 7 for NRCS Wetland Easement Descriptions.
- See Sheet 8 for Ingress-Egress Easement Description.
- See Sheet 9 for Geomatics Report.

NRCS Wetland Easements located in the NE 1/4 Section 27 - T99N - R7W, Winneshiek County, Iowa.

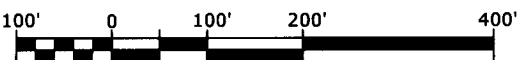
N 1/4 Corner
Section 27-99-7
Fd. 1/2"Ø Rebar
w/YPC 11442
Rec. Bk. I, Pg. 446

NE Corner
NW 1/4-NE 1/4
Section 27-99-7
Fd. 1/2"Ø Rebar
Rec. Bk. I, Pg. 282



NRCS Wetland Easements
Easement #1 Area = 18.71 Acres
Easement #2 Area = 3.99 Acres

NRCS Contract Number
75-6114-0-0269



Scale - 1 inch = 200 ft.



Notes:

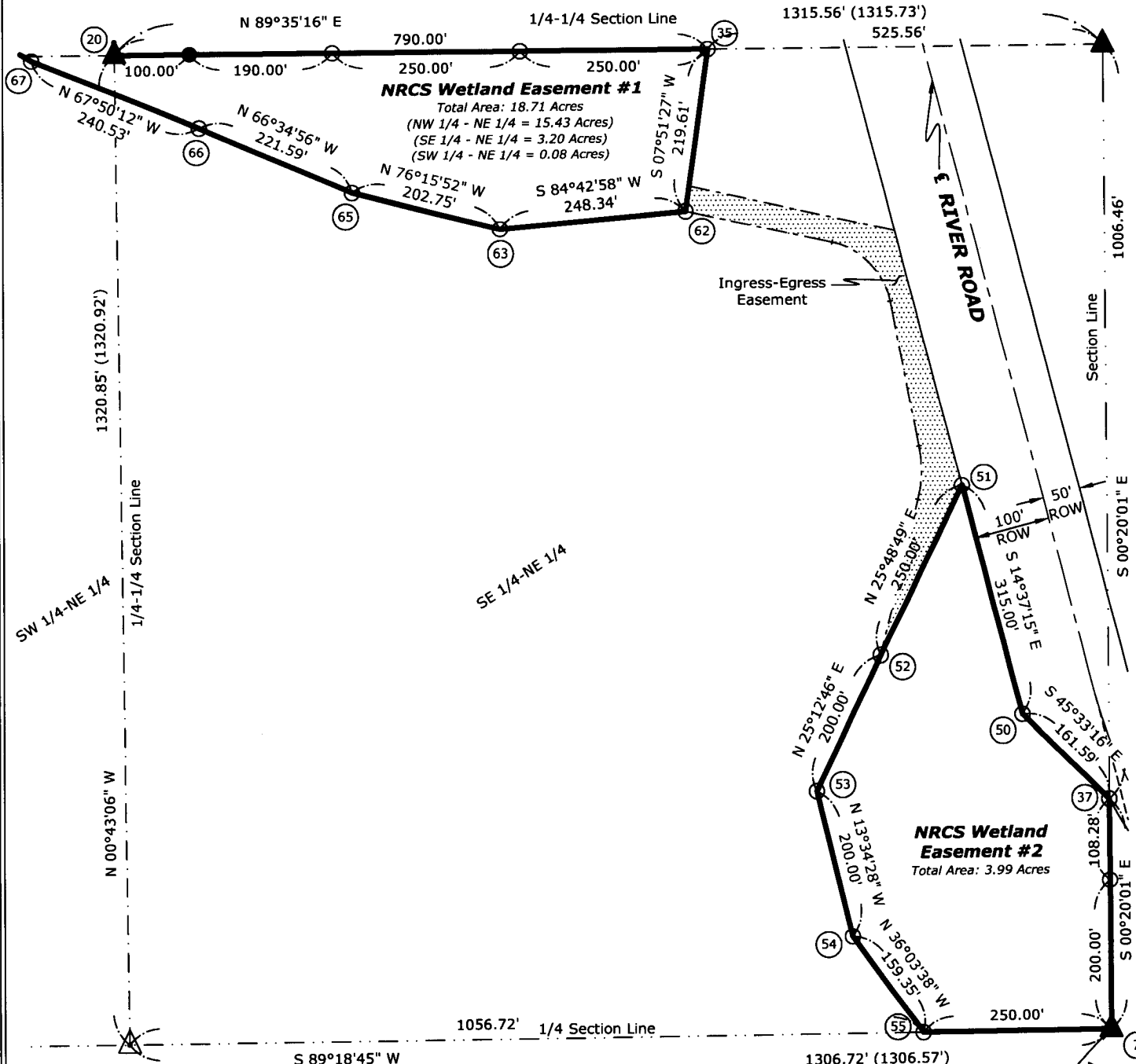
- See Sheet 1 for Location Map.
- See Sheet 2 for Section Details.
- See Sheet 3 for Road Alignment and Right-of-Way Details.
- See Sheet 4 & 5 for NRCS Easement Details.
- See Sheet 6 for Ingress-Egress Easement Details.
- See Sheet 7 for NRCS Wetland Easement Descriptions.
- See Sheet 8 for Ingress-Egress Easement Description.
- See Sheet 9 for Geomatics Report.

Plat of Survey

NRCS Wetland Easements located in the NE 1/4 Section 27 - T99N - R7W, Winneshiek County, Iowa.

NW Corner
SE 1/4-NE 1/4
Section 27-99-7
Fd. 3/4"Ø Rebar
w/2"Ø Alum. Cap 11442
Rec. Doc.# 2009-3087

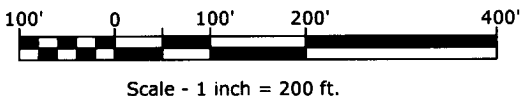
NE Corner
SE 1/4-NE 1/4
Section 27-99-7
Fd. 5/8"Ø Pipe
w/1" Alum. Cap 2886
Rec. Doc. #2009-3088



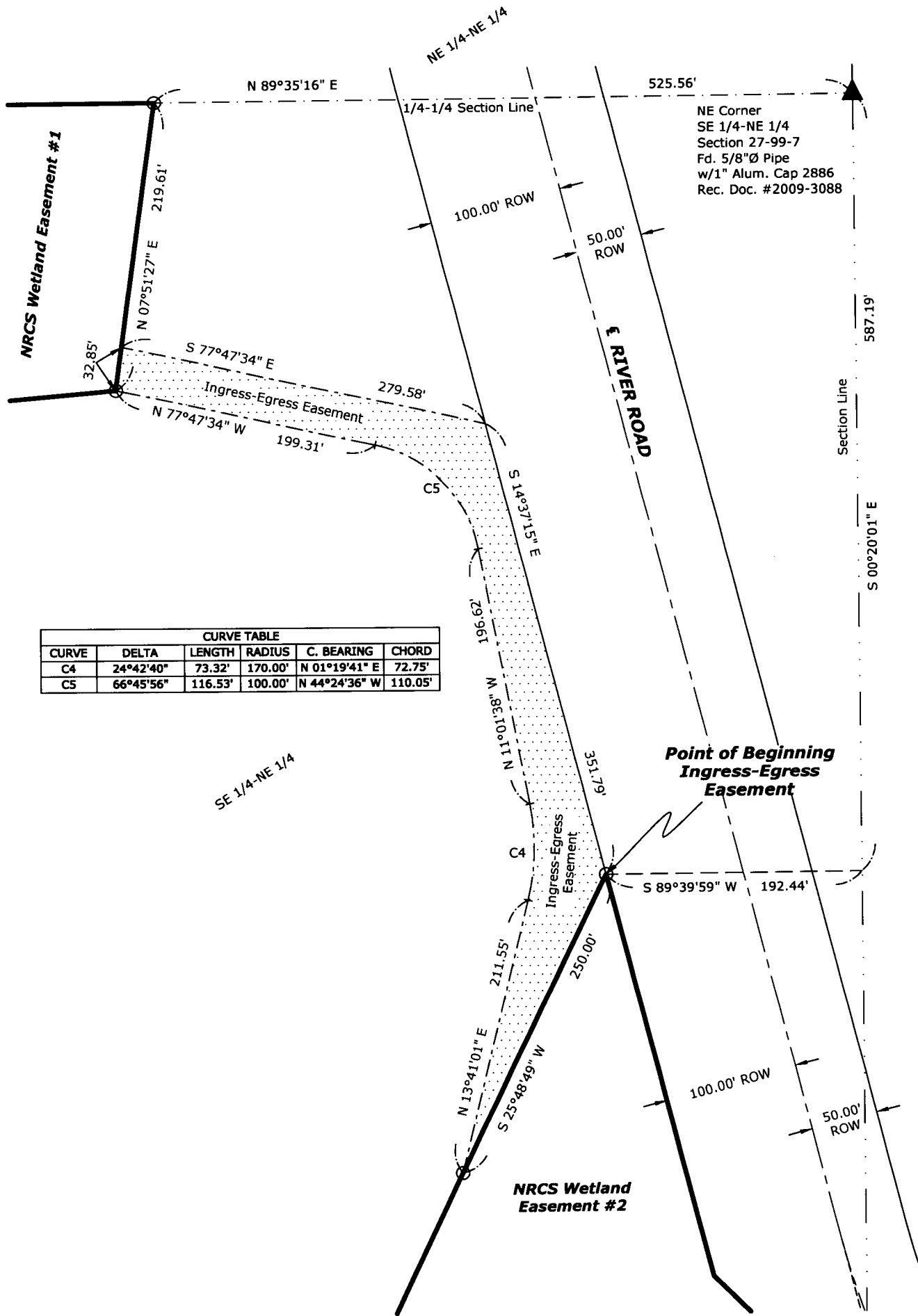
NRCS Wetland Easements
Easement #1 Area = 18.71 Acres
Easement #2 Area = 3.99 Acres

NRCS Contract Number
75-6114-0-0269

- Notes:
- See Sheet 1 for Location Map.
 - See Sheet 2 for Section Details.
 - See Sheet 3 for Road Alignment and Right-of-Way Details.
 - See Sheet 4 & 5 for NRCS Easement Details.
 - See Sheet 6 for Ingress-Egress Easement Details.
 - See Sheet 7 for NRCS Wetland Easement Descriptions.
 - See Sheet 8 for Ingress-Egress Easement Description.
 - See Sheet 9 for Geomatics Report.



NRCS Wetland Easements located in the NE 1/4 Section 27 - T99N - R7W, Winneshiek County, Iowa.



CURVE TABLE					
CURVE	DELTA	LENGTH	RADIUS	C. BEARING	CHORD
C4	24°42'40"	73.32'	170.00'	N 01°19'41" E	72.75'
C5	66°45'56"	116.53'	100.00'	N 44°24'36" W	110.05'

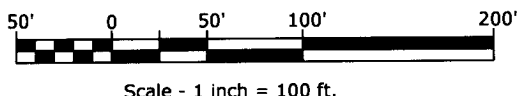
NE Corner
SE 1/4-NE 1/4
Section 27-99-7
Fd. 5/8"Ø Pipe
w/1" Alum. Cap 2886
Rec. Doc. #2009-3088

**Point of Beginning
Ingress-Egress
Easement**

**NRCS Contract Number
75-6114-0-0269**

**NRCS Wetland Easements
Easement #1 Area = 18.71 Acres
Easement #2 Area = 3.99 Acres**

- Notes:
- See Sheet 1 for Location Map.
 - See Sheet 2 for Section Details.
 - See Sheet 3 for Road Alignment and Right-of-Way Details.
 - See Sheet 4 & 5 for NRCS Easement Details.
 - See Sheet 6 for Ingress-Egress Easement Details.
 - See Sheet 7 for NRCS Wetland Easement Descriptions.
 - See Sheet 8 for Ingress-Egress Easement Description.
 - See Sheet 9 for Geomatics Report.



**NRCS Wetland Easements located in the NE 1/4
Section 27 - T99N - R7W, Winneshiek County, Iowa.**

EASEMENT DESCRIPTIONS:

NRCS Wetland Easement #1 located in the Northeast Quarter of Section 27, Township 99 North, Range 7 West of the 5th P.M., Winneshiek County, Iowa, and more particularly described as follows:

Beginning at the North Quarter Corner of said Section;

Thence **North 89°38'13" East (Assumed Bearing), 175.00 feet** along the North Line of said Northeast Quarter;

Thence **South 10°59'17" East, 215.82 feet**; Thence **South 37°49'34" East, 121.08 feet**;

Thence **South 20°26'32" East, 174.71 feet**; Thence **South 40°13'57" East, 176.06 feet**;

Thence **South 64°24'33" East, 248.67 feet**; Thence **South 73°25'07" East, 240.52 feet**;

Thence **South 78°17'10" East, 245.12 feet**;

Thence **North 77°14'12" East, 174.29 feet** to the East Line of the Northwest Quarter of the Northeast Quarter of said Section;

Thence **South 00°41'54" East, 515.00 feet** along said East Line to the Southeast Corner thereof;

Thence **North 89°35'16" East, 790.00 feet** along the North Line of the Southeast Quarter of the Northeast Quarter of said Section;

Thence **South 07°51'27" West, 219.61 feet**; Thence **South 84°42'58" West, 248.34 feet**;

Thence **North 76°15'52" West, 202.75 feet**; Thence **North 66°34'56" West, 221.59 feet**;

Thence **North 67°50'12" West, 240.53 feet**; Thence **North 58°57'44" West, 213.56 feet**;

Thence **North 70°08'44" West, 214.96 feet**; Thence **North 81°21'50" West, 240.23 feet**;

Thence **North 72°57'05" West, 214.00 feet**; Thence **North 62°03'58" West, 190.27 feet**;

Thence **North 45°44'36" West, 193.56 feet**; Thence **North 16°16'42" West, 242.91 feet**;

Thence **North 06°36'25" West, 151.30 feet** to the West Line of said Northeast Quarter;

Thence **North 00°51'08" West, 425.00 feet** along said West Line to the Point of Beginning.

Containing **18.71 Acres**, subject to any easements recorded or unrecorded.

NRCS Wetland Easement #2 located in the Southeast Quarter of the Northeast Quarter of Section 27, Township 99 North, Range 7 West of the 5th P.M., Winneshiek County, Iowa, and more particularly described as follows:

Beginning at the East Quarter Corner of said Section;

Thence **South 89°18'45" West, 250.00 feet** along the South Line of said Northeast Quarter;

Thence **North 36°03'38" West, 159.35 feet**;

Thence **North 13°34'28" West, 200.00 feet**;

Thence **North 25°12'46" East, 200.00 feet**;

Thence **North 25°48'49" East, 250.00 feet** to the Westerly Right-of-Way Line of River Road;

Thence **South 14°37'15" East, 315.00 feet**;

Thence **South 45°33'16" East, 161.59 feet** both along said Westerly Right-of-Way Line to the East Line of said Northeast Quarter;

Thence **South 00°20'01" East, 308.28 feet** along said East Line to the Point of Beginning.

Containing **3.99 Acres**, subject to any easements recorded or unrecorded.

Note: For the purposes of this Easement the North Line of the Northwest Quarter of the Northwest Quarter of said Section 27 is assumed to bear **North 89°38'13" East**.

NRCS Wetland Easements
Easement #1 Area = 18.71 Acres
Easement #2 Area = 3.99 Acres

NRCS Contract Number
75-6114-0-0269

See the plat(s) attached to this original easement description.

**NRCS Wetland Easements located in the NE 1/4
Section 27 - T99N - R7W, Winneshiek County, Iowa.**

INGRESS-EGRESS EASEMENT DESCRIPTION:

Ingress-Egress Easement located in the Southeast Quarter of the Northeast Quarter of Section 27, Township 99 North, Range 7 West of the 5th P.M., Winneshiek County, Iowa, and more particularly described as follows:

Commencing at the Northeast Corner of said Quarter-Quarter Section;

Thence **South 00°20'01" East, 587.19 feet**;

Thence **South 89°39'59" West, 192.44 feet** to the Westerly Right-of-Way Line of River Road and the Northern most Point of the NRCS Wetland Easement #2 as shown on this Plat of Survey and the Point of Beginning;

Thence **South 25°48'49" West, 250.00 feet** along said Wetland Easement #2;

Thence **North 13°41'01" East, 211.55 feet**;

Thence **Northerly 73.32 feet** along a 170.00 foot Radius Curve Concave Westerly (said Curve having a long chord of North 01°19'41" East, 72.75 feet);

Thence **North 11°01'38" West, 196.62 feet**;

Thence **Northwesterly 116.53 feet** along a 100.00 foot Radius Curve Concave Southwesterly (said Curve having a long chord of North 44°24'36" West, 110.05 feet);

Thence **North 77°47'34" West, 199.31 feet** to the Eastern most line of NRCS Wetland Easement #1 as shown on this plat of survey;

Thence **North 07°51'27" East, 32.85 feet** along said Wetland Easement #1;

Thence **South 77°47'34" East, 279.58 feet** to said Westerly Right-of-Way Line;

Thence **South 14°37'15" East, 351.79 feet** along said Westerly Right-of-Way Line to the Point of Beginning.

Containing **1.93 Acres**, subject to any other easements recorded or unrecorded.

NRCS Wetland Easements
Easement #1 Area = 18.71 Acres
Easement #2 Area = 3.99 Acres

NRCS Contract Number
75-6114-0-0269

See the plat(s) attached to this original easement description.

**NRCS Wetland Easements located in the NE 1/4
Section 27 - T99N - R7W, Winneshiek County, Iowa.**

Geomatics Report

Number	Northing	Easting	Description	Latitude	Longitude
7	3965476.89	5413028.38	Easement Corner	43.363861	-91.650669
13	3968088.74	5410369.00	Easement Corner	43.371183	-91.660453
14	3968089.84	5410544.00	Easement Corner	43.371175	-91.659794
20	3966781.95	5411705.20	Easement Corner	43.366769	-91.655536
26	3967296.92	5411698.92	Easement Corner	43.368901	-91.655517
33	3967877.98	5410585.13	Easement Corner	43.369842	-91.659656
34	3967618.64	5410720.40	Easement Corner	43.369872	-91.659169
35	3966787.64	5412495.18	Easement Corner	43.367486	-91.652564
37	3965785.16	5413026.58	Easement Corner	43.364706	-91.650650
40	3967782.35	5410659.38	Easement Corner	43.370325	-91.659386
41	3967484.23	5410834.12	Easement Corner	43.369497	-91.658753
42	3967376.82	5411058.40	Easement Corner	43.369189	-91.657919
43	3967308.18	5411288.92	Easement Corner	43.368986	-91.657058
44	3967258.41	5411528.94	Easement Corner	43.368836	-91.656158
45	3967663.78	5410375.30	Easement Corner	43.370017	-91.660464
46	3967513.49	5410392.73	Easement Corner	43.369603	-91.660411
47	3967280.31	5410460.82	Easement Corner	43.368961	-91.660172
50	3965898.31	5412911.22	Easement Corner	43.365022	-91.651075
51	3966203.12	5412831.70	Easement Corner	43.365864	-91.651347
52	3965978.06	5412722.84	Easement Corner	43.365253	-91.651775
53	3965797.13	5412637.65	Easement Corner	43.364761	-91.652111
54	3965602.71	5412684.59	Easement Corner	43.364225	-91.651950
55	3965473.88	5412778.40	Easement Corner	43.363867	-91.651608
62	3966570.09	5412465.16	Easement Corner	43.366892	-91.652697
63	3966547.22	5412217.87	Easement Corner	43.366844	-91.653628
65	3966595.36	5412020.92	Easement Corner	43.366989	-91.654364
66	3966683.42	5411817.58	Easement Corner	43.367242	-91.655122
67	3966774.16	5411594.83	Easement Corner	43.367503	-91.655950
68	3966884.27	5411411.85	Easement Corner	43.367817	-91.656631
70	3966957.28	5411209.66	Easement Corner	43.368031	-91.657383
71	3966993.35	5410972.15	Easement Corner	43.368142	-91.658275
72	3967056.10	5410767.55	Easement Corner	43.368328	-91.659039
73	3967145.23	5410599.45	Easement Corner	43.368581	-91.659664

NRCS Wetland Easements
Easement #1 Area = 18.71 Acres
Easement #2 Area = 3.58 Acres

NRCS Contract Number
75-6114-0-0269

Notes:

See Sheet 1 for Location Map.
 See Sheet 2 for Section Details.
 See Sheet 3 & 4 for NRCS Easement Details.
 See Sheet 5 for Ingress-Egress Easement Details.
 See Sheet 6 for NRCS Wetland Easement Descriptions.
 See Sheet 7 for Ingress-Egress Easement Description.
 See Sheet 8 for Geomatics Report.