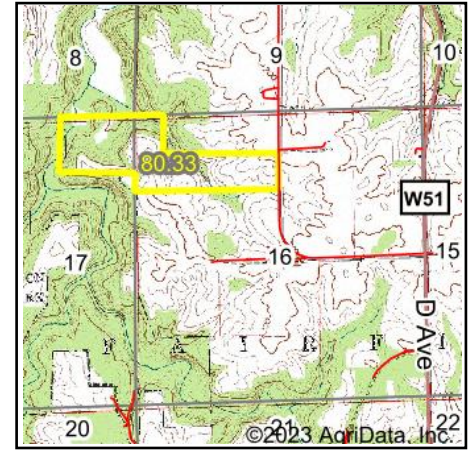
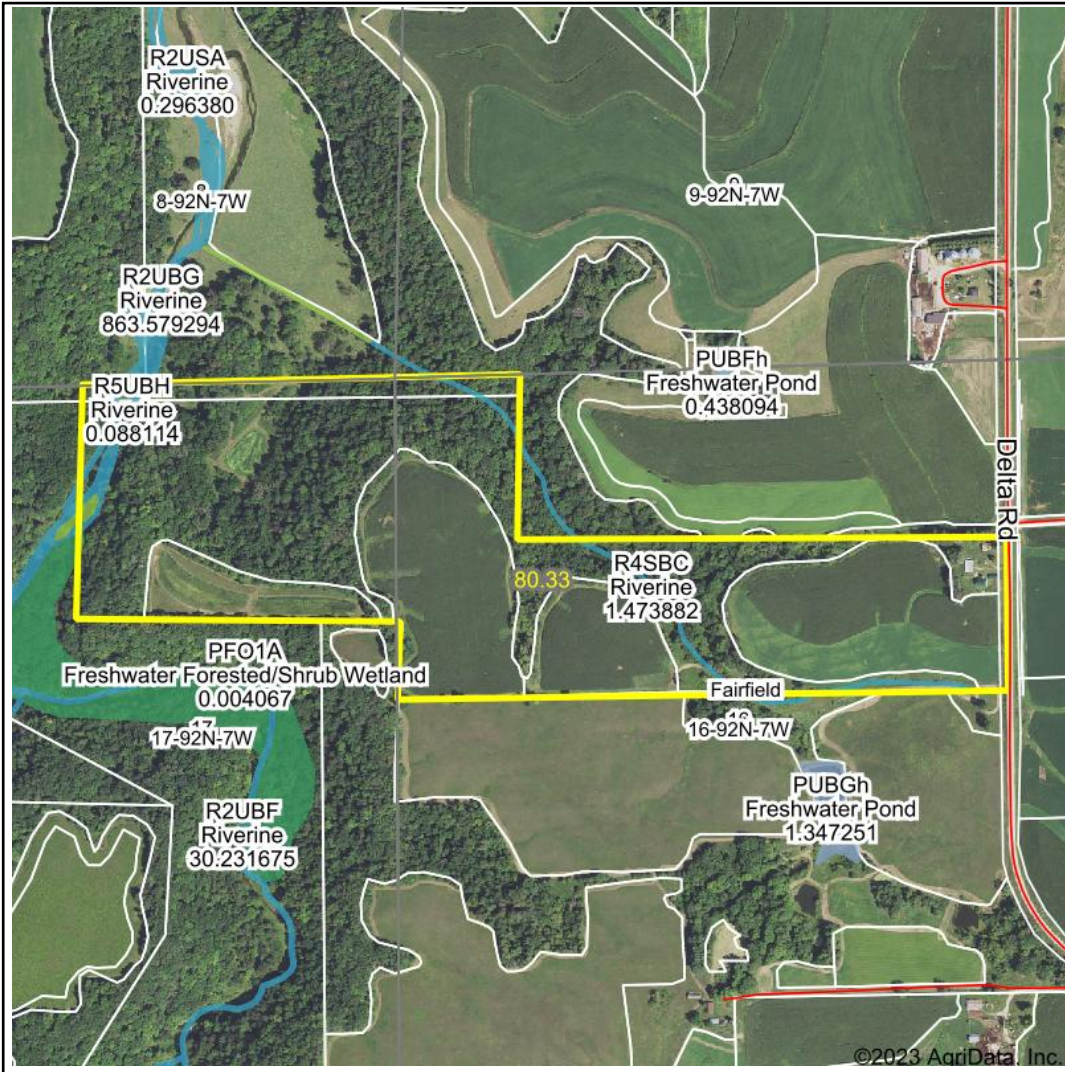


# Wetlands Map



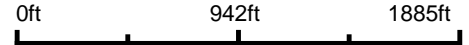
**State:** Iowa  
**Location:** 16-92N-7W  
**County:** Fayette  
**Township:** Fairfield  
**Date:** 7/26/2023



Maps Provided By:



© AgriData, Inc. 2023 [www.AgriDataInc.com](http://www.AgriDataInc.com)



Classification Code	Type	Acres
R4SBC	Riverine	0.96
R2UBG	Riverine	0.86
PEM1A	Freshwater Emergent Wetland	0.14
R5UBH	Riverine	0.09
R2USA	Riverine	0.09
PFO1A	Freshwater Forested/Shrub Wetland	0.04
Total Acres		2.18

Data Source: National Wetlands Inventory website. U.S. DoI, Fish and Wildlife Service, Washington, D.C. <http://www.fws.gov/wetlands/>