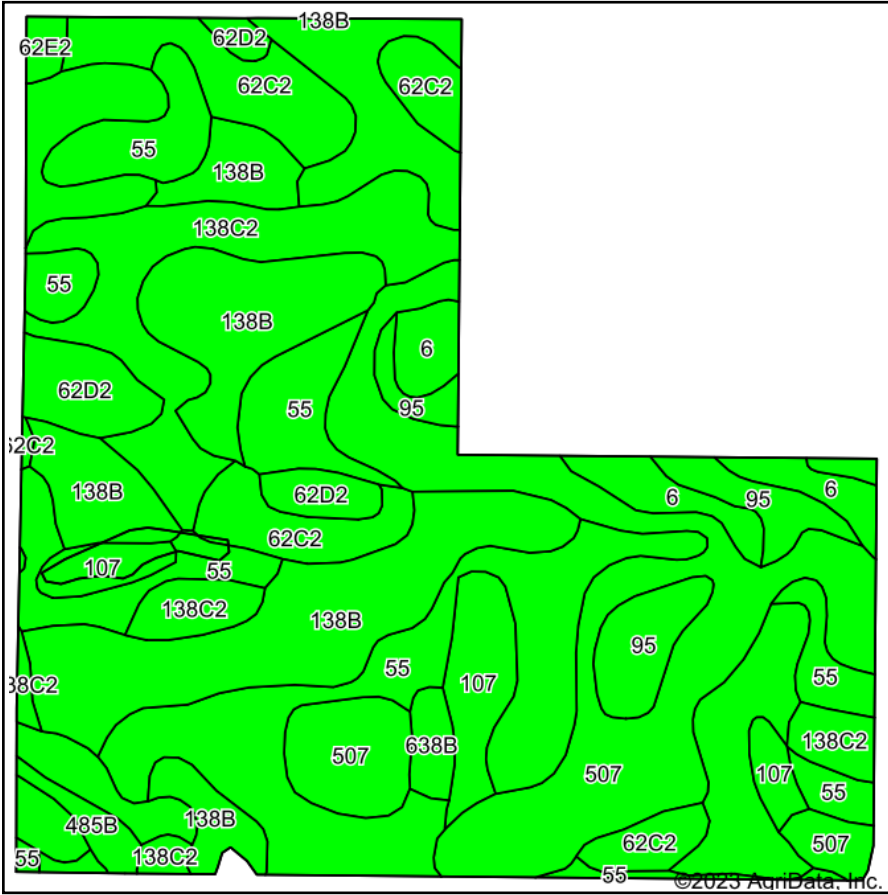
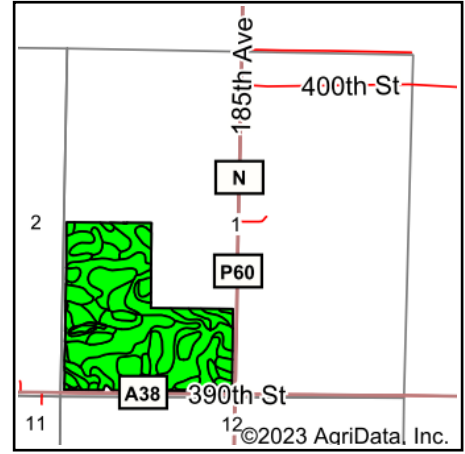


Soils Map



Soils data provided by USDA and NRCS.



State: **Iowa**
 County: **Kossuth**
 Location: **1-98N-28W**
 Township: **Ramsey**
 Acres: **115.32**
 Date: **9/7/2023**



Maps Provided By:



Area Symbol: IA109, Soil Area Version: 29

Code	Soil Description	Acres	Percent of field	CSR2 Legend	Non-Irr Class *c	CSR2**	CSR	*n NCCPI Overall	*n NCCPI Corn	*n NCCPI Small Grains	*n NCCPI Soybeans	
138B	Clarion loam, 2 to 6 percent slopes	24.90	21.6%		Ile	89	77	83	78	62	83	
507	Canisteo clay loam, 0 to 2 percent slopes	23.52	20.4%		Ilw	84	75	81	71	56	81	
55	Nicollet clay loam, 1 to 3 percent slopes	23.25	20.2%		lw	89	85	81	81	64	81	
138C2	Clarion loam, 6 to 10 percent slopes, moderately eroded	11.39	9.9%		IIIe	83	62	70	68	52	70	
62C2	Storden loam, 6 to 10 percent slopes, moderately eroded	8.73	7.6%		IIIe	64	49	68	64	49	68	
62D2	Storden loam, 10 to 16 percent slopes, moderately eroded	7.99	6.9%		IVe	41	39	65	62	46	65	
107	Webster clay loam, 0 to 2 percent slopes	5.31	4.6%		Ilw	86	80	82	78	60	82	
95	Harps clay loam, 0 to 2 percent slopes	4.25	3.7%		Ilw	72	60	82	70	54	82	
6	Okoboji silty clay loam, 0 to 1 percent slopes	3.72	3.2%		IIIw	59	54	76	74	64	74	
638B	Clarion-Swanlake complex, 2 to 6 percent slopes	0.91	0.8%		Ile	85	71	82	75	60	82	
485B	Spillville loam, 2 to 5 percent slopes	0.85	0.7%		Ile	88	77	89	87	68	87	
62E2	Storden loam, 10 to 22 percent slopes, moderately eroded	0.50	0.4%		IVe	32	30	59	58	46	58	
Weighted Average						2.15	80.2	70.5	*n 78.1	*n 73.6	*n 57.7	*n 78.1

**IA has updated the CSR values for each county to CSR2.

*n: The aggregation method is "Weighted Average using all components"

*c: Using Capabilities Class Dominant Condition Aggregation Method

Soils data provided by USDA and NRCS.