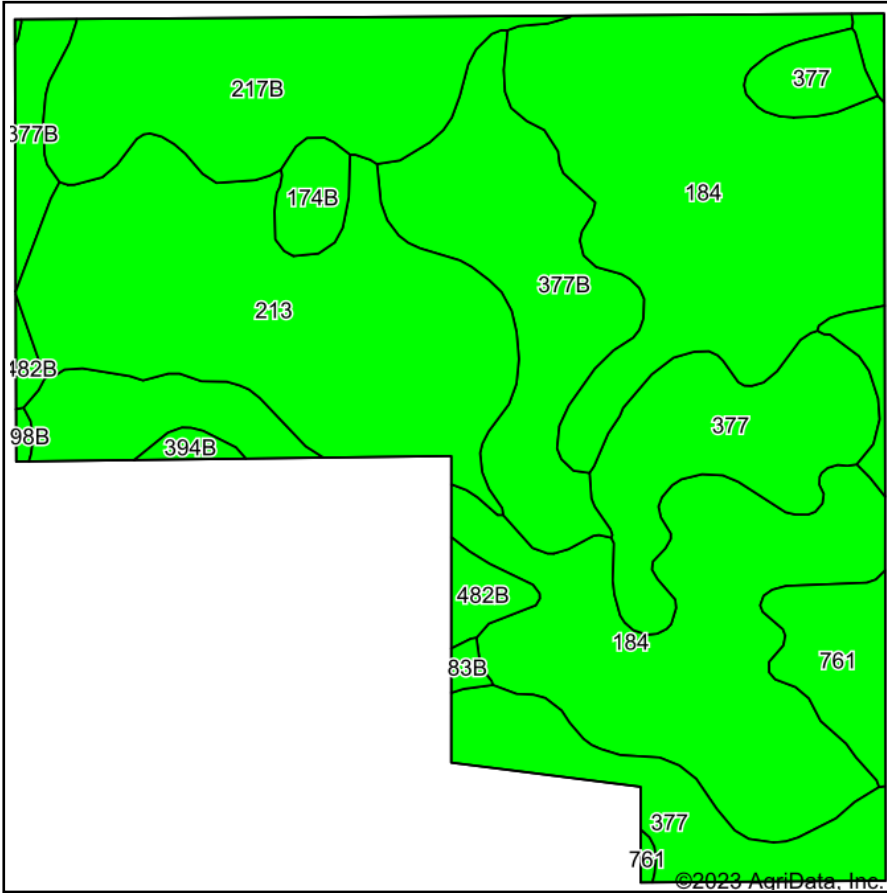
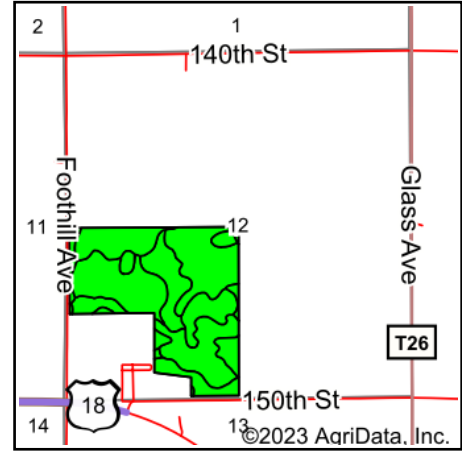


# Soils Map



Soils data provided by USDA and NRCS.



State: **Iowa**  
 County: **Floyd**  
 Location: **12-96N-18W**  
 Township: **Rudd**  
 Acres: **110.49**  
 Date: **9/7/2023**



Maps Provided By:



© AgriData, Inc. 2023

www.AgriDataInc.com



Area Symbol: IA067, Soil Area Version: 28

Code	Soil Description	Acres	Percent of field	CSR2 Legend	Non-Irr Class *c	CSR2**	CSR	*n NCCPI Overall	*n NCCPI Corn	*n NCCPI Small Grains	*n NCCPI Soybeans	
184	Klinger silty clay loam, 1 to 4 percent slopes	41.28	37.4%		lw	95	95	88	88	79	82	
213	Rockton loam, 30 to 40 inches to limestone, till plain, 0 to 2 percent slopes	20.52	18.6%		lls	54	79	59	59	45	41	
377	Dinsdale silty clay loam, 0 to 2 percent slopes	15.66	14.2%		le	99	95	85	85	70	73	
377B	Dinsdale silty clay loam, 2 to 5 percent slopes	12.75	11.5%		lle	94	90	87	87	68	74	
217B	Ripon silt loam, 30 to 40 inches to limestone, 1 to 5 percent slopes	11.92	10.8%		lle	58	79	67	64	62	66	
761	Franklin silt loam, 1 to 3 percent slopes	4.60	4.2%		lw	85	90	89	89	63	76	
174B	Bolan loam, 2 to 5 percent slopes	1.44	1.3%		lls	64	70	81	81	64	70	
482B	Racine loam, 2 to 5 percent slopes	1.43	1.3%		lle	76	79	65	65	46	55	
394B	Ostrander loam, 2 to 5 percent slopes	0.45	0.4%		lle	88	84	75	75	69	66	
83B	Kenyon loam, 2 to 5 percent slopes	0.29	0.3%		lle	90	84	87	86	66	71	
198B	Floyd loam, 1 to 4 percent slopes	0.15	0.1%		llw	89	74	88	83	63	88	
<b>Weighted Average</b>						<b>1.44</b>	<b>82.7</b>	<b>88.9</b>	<b>*n 79.4</b>	<b>*n 79.1</b>	<b>*n 66.9</b>	<b>*n 69.6</b>

\*\*IA has updated the CSR values for each county to CSR2.

\*n: The aggregation method is "Weighted Average using all components"

\*c: Using Capabilities Class Dominant Condition Aggregation Method

Soils data provided by USDA and NRCS.