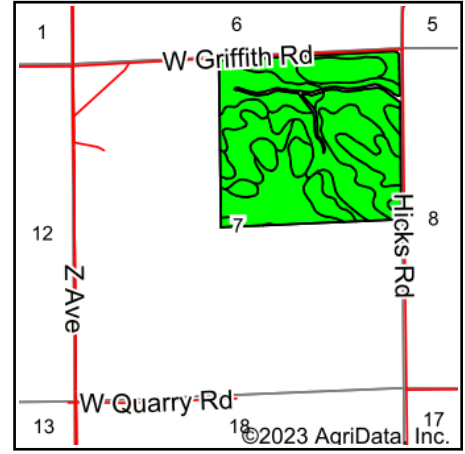
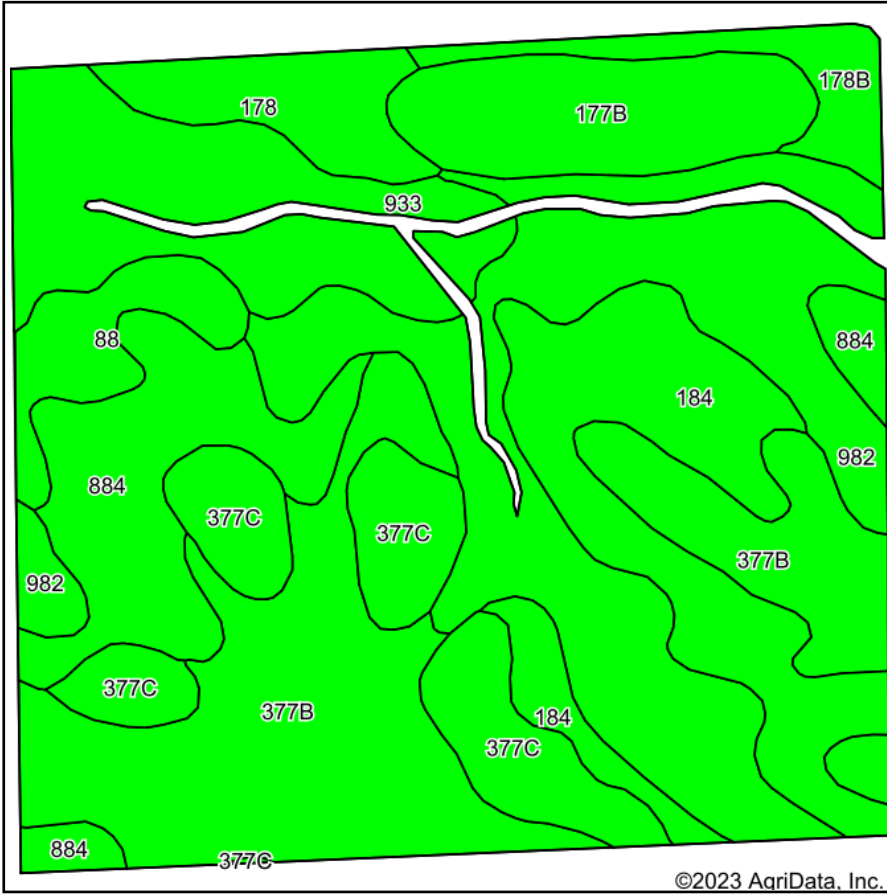


Soils Map



State: **Iowa**
 County: **Black Hawk**
 Location: **7-87N-14W**
 Township: **Lincoln**
 Acres: **164.74**
 Date: **9/15/2023**



Maps Provided By:



Soils data provided by USDA and NRCS.

Area Symbol: IA013, Soil Area Version: 30

Code	Soil Description	Acres	Percent of field	CSR2 Legend	Non-Irr Class *c	CSR2**	CSR	*n NCCPI Overall	*n NCCPI Corn	*n NCCPI Small Grains	*n NCCPI Soybeans	
377B	Dinsdale silty clay loam, 2 to 5 percent slopes	34.81	21.1%		lle	94	90	87	87	68	74	
982	Maxmore silty clay loam, 0 to 2 percent slopes	34.04	20.7%		llw	94	93	91	91	76	89	
184	Klinger silty clay loam, 1 to 4 percent slopes	20.87	12.7%		lw	95	90	88	88	79	82	
933	Sawmill silty clay loam, shallow loess, 0 to 2 percent slopes, occasionally flooded	16.87	10.2%		llw	78	80	77	77	35	75	
884	Klingmore silty clay loam, 1 to 3 percent slopes	16.37	9.9%		l	95	95	99	99	78	90	
377C	Dinsdale silty clay loam, 5 to 9 percent slopes	15.00	9.1%		llle	90	75	85	85	67	72	
177B	Saude loam, 2 to 5 percent slopes	10.72	6.5%		lls	55	58	76	76	63	59	
178	Waukee loam, 0 to 2 percent slopes	6.13	3.7%		lls	69	79	82	82	70	70	
88	Nevin silty clay loam, 0 to 2 percent slopes	5.38	3.3%		lw	95	90	96	95	72	89	
178B	Waukee loam, 2 to 5 percent slopes	4.55	2.8%		lls	64	74	81	81	70	68	
Weighted Average						1.83	88	85.8	*n 87.2	*n 87.1	*n 68.5	*n 78.8

**IA has updated the CSR values for each county to CSR2.

*n: The aggregation method is "Weighted Average using all components"

*c: Using Capabilities Class Dominant Condition Aggregation Method

Soils data provided by USDA and NRCS.