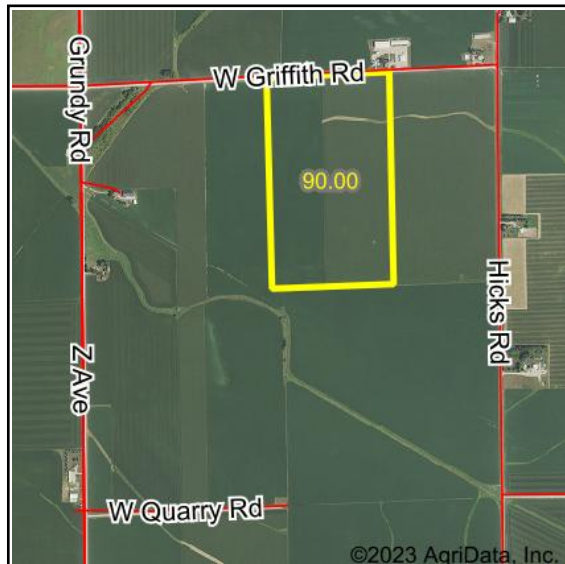
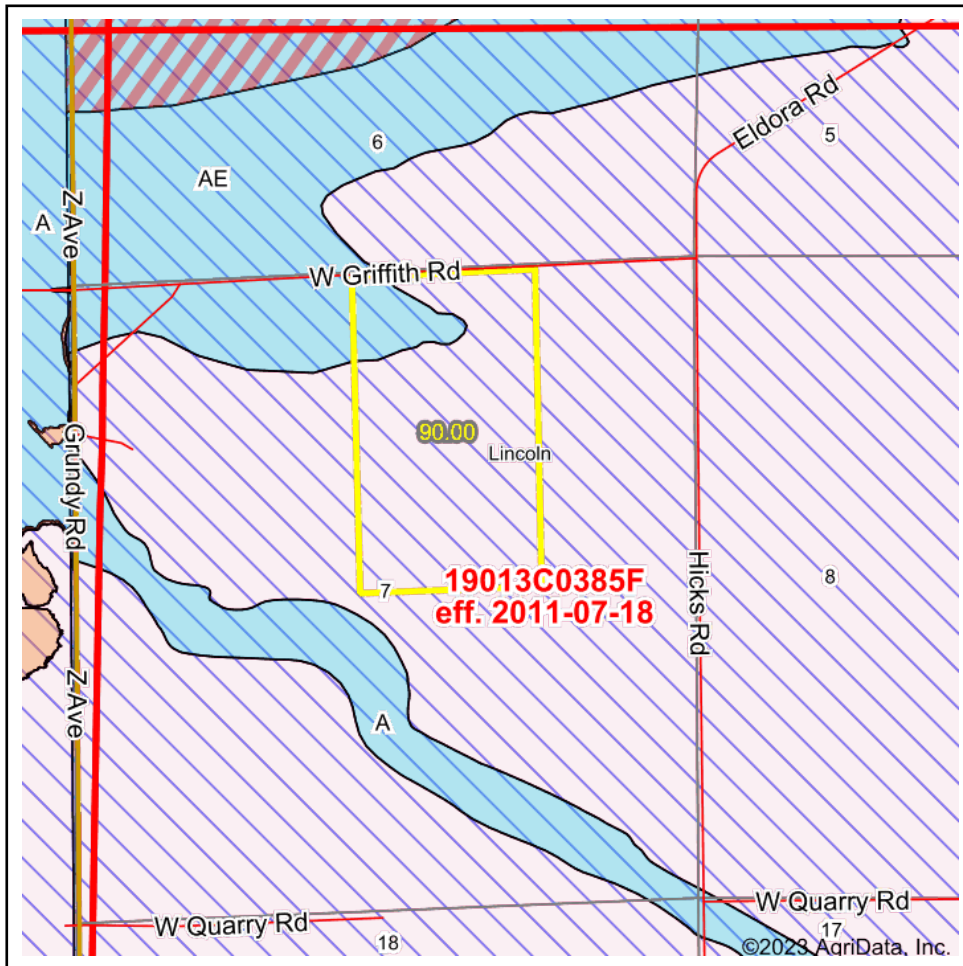


FEMA Report



Map Center: 42° 21' 52.7, -92° 31' 16.12

State: IA Acres: 90
 County: Black Hawk Date: 9/4/2023
 Location: 7-87N-14W
 Township: Lincoln

HIGH POINT
LAND COMPANY

Maps Provided By:

surety
CUSTOMIZED ONLINE MAPPING

© AgriData, Inc. 2023 www.AgriDataInc.com



Name	Number	County	NFIP Participation	Acres	Percent
BLACK HAWK COUNTY	190535	Black Hawk	Regular	90	100%
Total				90	100%

Map Change	Date	Case No.	Acres	Percent
No			0	0%

Zone	SubType	Description	Acres	Percent
X	AREA OF MINIMAL FLOOD HAZARD	Outside 500-year Floodplain	80.52	89.5%
AE		100-year Floodplain	9.48	10.5%
Total			90.00	100%

Panel	Effective Date	Acres	Percent
19013C0385F	7/18/2011	90	100%
Total		90	100%