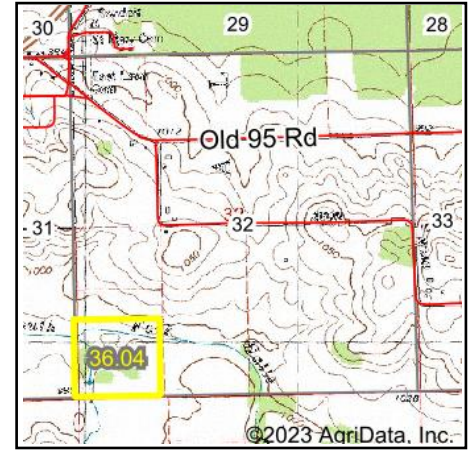


Wetlands Map



State: Wisconsin
Location: 32-23N-4W
County: Jackson
Township: Alma
Date: 7/26/2023



Maps Provided By:



© AgriData, Inc. 2023 www.AgriDataInc.com



0ft 389ft 778ft

Classification Code	Type	Acres
PEM1A	Freshwater Emergent Wetland	9.78
R5UBH	Riverine	0.62
R4SBC	Riverine	0.46
Total Acres		10.86

Data Source: National Wetlands Inventory website. U.S. DoI, Fish and Wildlife Service, Washington, D.C. <http://www.fws.gov/wetlands/>