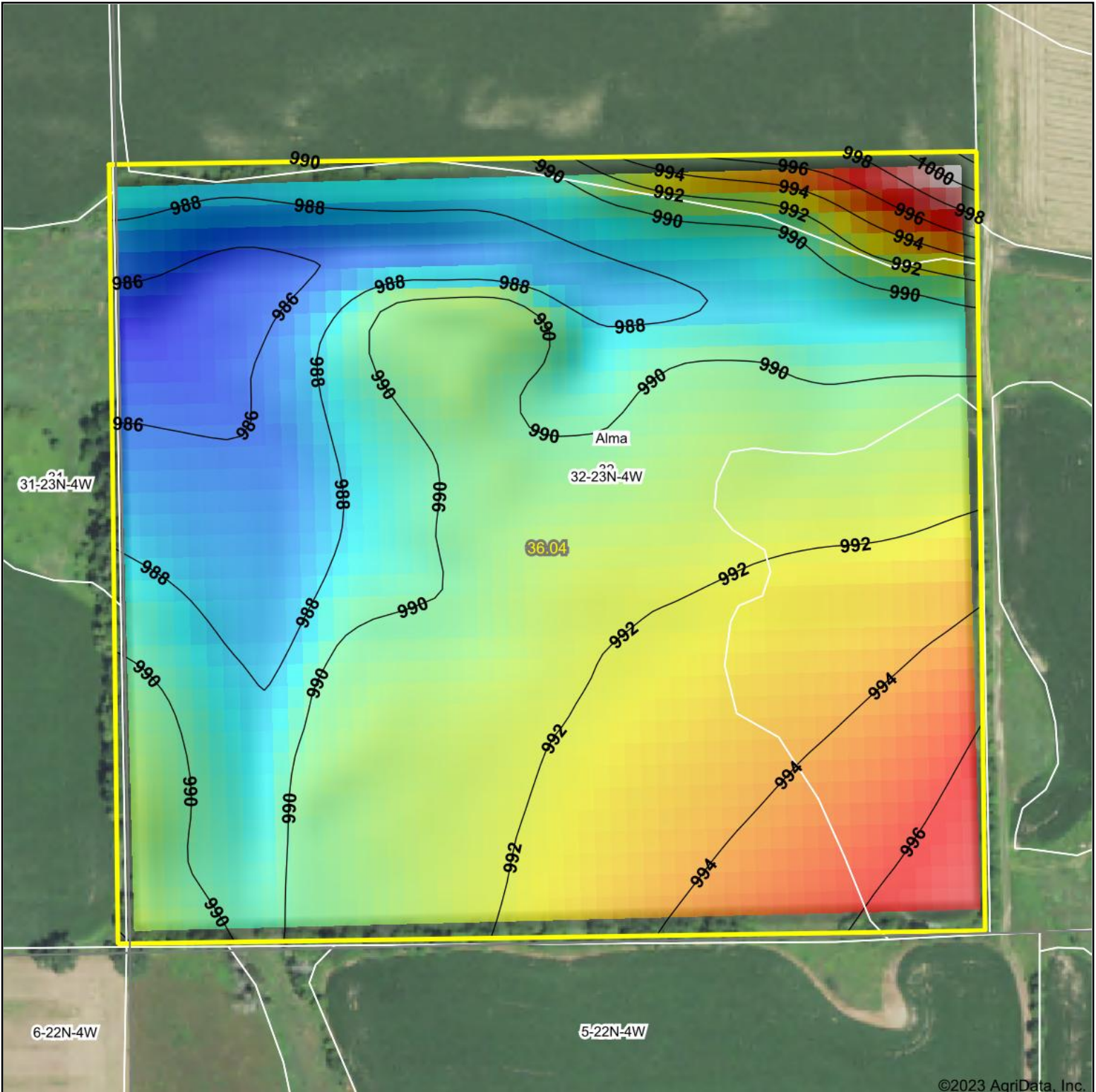
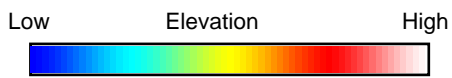


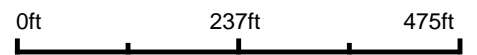
Topography Hillshade



©2023 AgriData, Inc.



Source: USGS 10 meter dem



Interval(ft): 2

Min: 984.8

Max: 999.8

Range: 15.0

Average: 990.5

Standard Deviation: 2.56 ft



7/26/2023

32-23N-4W
Jackson County
Wisconsin

Boundary Center: 44° 25' 27.16, -90° 54' 0.83



Maps Provided By:



© AgriData, Inc. 2023 www.AgriDataInc.com

Field borders provided by Farm Service Agency as of 5/21/2008.