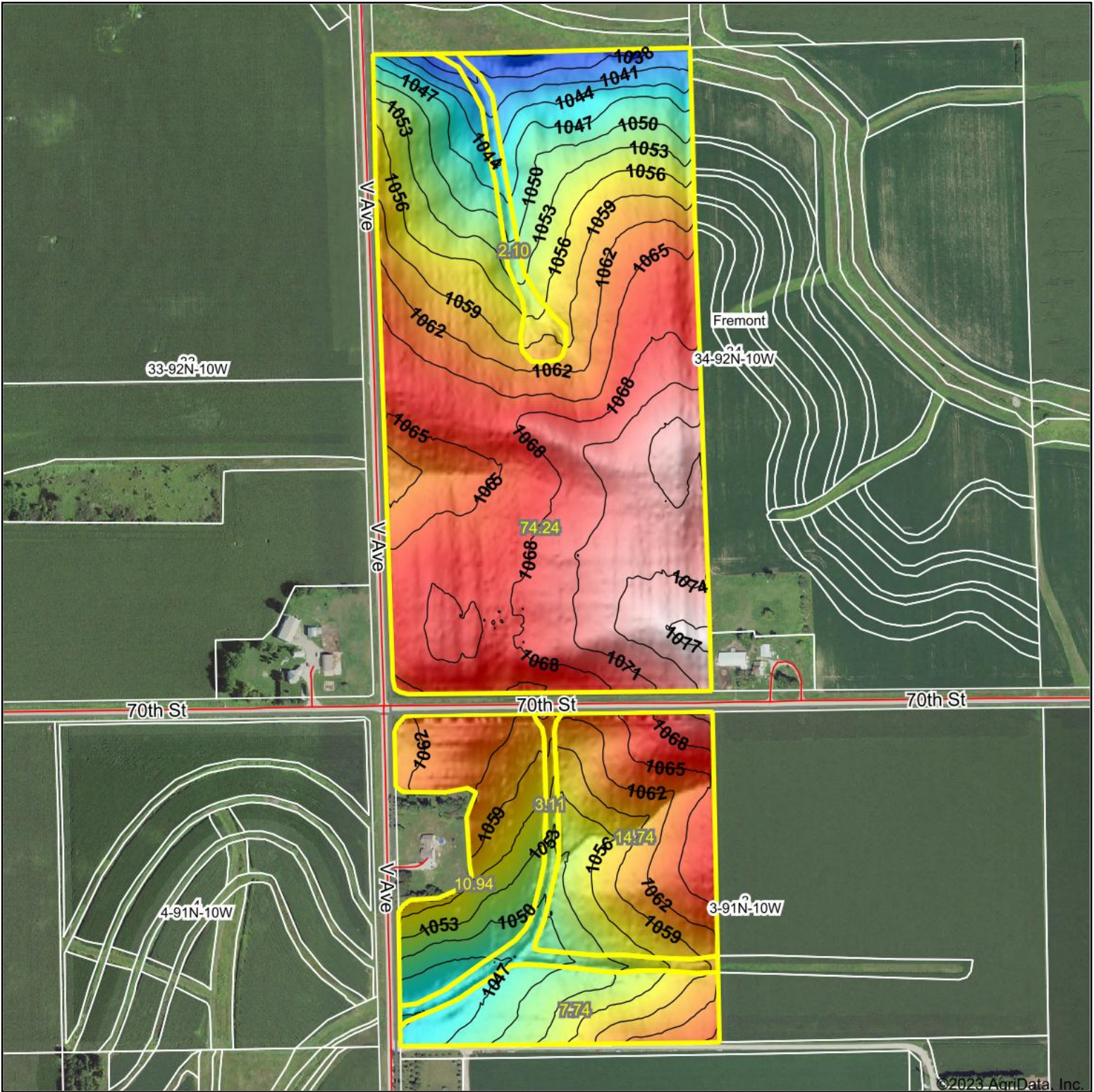


Topography Hillshade



<p>Low Elevation High</p>	<p>Source: USGS 3 meter dem</p> <p>Interval(ft): 3</p> <p>Min: 1,034.2</p> <p>Max: 1,077.9</p> <p>Range: 43.7</p> <p>Average: 1,060.0</p> <p>Standard Deviation: 9.06 ft</p>	<p>0ft 628ft 1256ft</p> <p> N W E S 7/24/2023 </p> <p> 34-92N-10W Fayette County Iowa </p> <p>Boundary Center: 42° 43' 52.84, -92° 1' 6.49</p>
---------------------------	--	---

HIGH POINT
 LAND COMPANY
 Maps Provided By:

surety[®]
 CUSTOMIZED ONLINE MAPPING
 © AgriData, Inc. 2023 www.AgriDataInc.com
 Field borders provided by Farm Service Agency as of 5/21/2008.