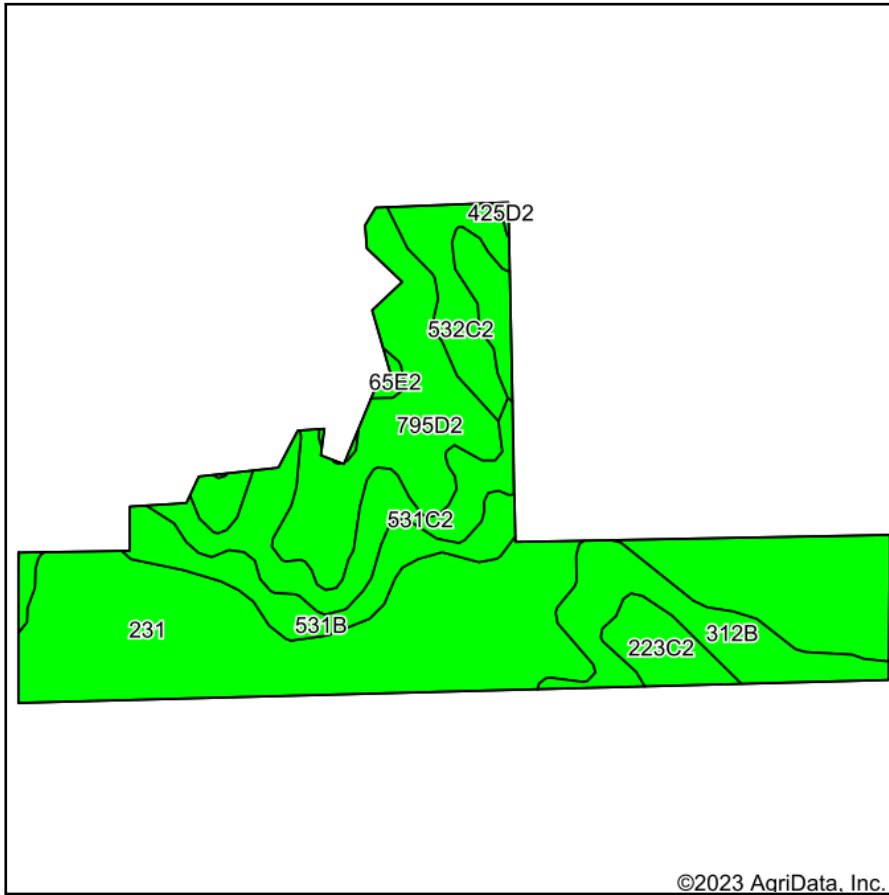
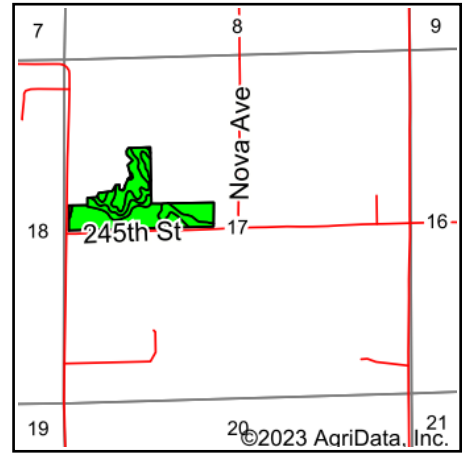


Soils Map



Soils data provided by USDA and NRCS.



State: **Iowa**
 County: **Van Buren**
 Location: **17-68N-9W**
 Township: **Vernon**
 Acres: **29.75**
 Date: **8/2/2023**



Maps Provided By:



© AgriData, Inc. 2023

www.AgriDataInc.com



Area Symbol: IA177, Soil Area Version: 30

Code	Soil Description	Acres	Percent of field	CSR2 Legend	Non-Irr Class *c	CSR2**	CSR	*n NCCPI Overall	*n NCCPI Corn	*n NCCPI Small Grains	*n NCCPI Soybeans	
231	Edina silt loam, 0 to 2 percent slopes	13.42	45.1%		Illw	59	63	70	70	69	64	
795D2	Ashgrove silty clay loam, 9 to 14 percent slopes, moderately eroded	4.82	16.2%		IVe	7	8	50	50	46	39	
531B	Kniffin silt loam, 2 to 5 percent slopes	3.08	10.4%		IIIe	55	54	71	64	71	66	
531C2	Kniffin silty clay loam, 5 to 9 percent slopes, moderately eroded	2.89	9.7%		IIIe	48	31	62	56	61	60	
312B	Seymour silt loam, 2 to 5 percent slopes	2.68	9.0%		IIIe	64	60	70	70	70	64	
532C2	Rathbun silty clay loam, 5 to 9 percent slopes, moderately eroded	1.64	5.5%		IIIe	44	28	71	71	61	51	
223C2	Rinda silty clay loam, 5 to 9 percent slopes, moderately eroded	1.07	3.6%		IVw	45	22	60	60	52	46	
65E2	Lindley loam, 14 to 18 percent slopes, moderately eroded	0.15	0.5%		VIe	29	28	66	66	56	53	
Weighted Average						3.21	48.1	46.2	*n 65.8	*n 64.5	*n 63.7	*n 58.3

**IA has updated the CSR values for each county to CSR2.

*n: The aggregation method is "Weighted Average using all components"

*c: Using Capabilities Class Dominant Condition Aggregation Method

Soils data provided by USDA and NRCS.