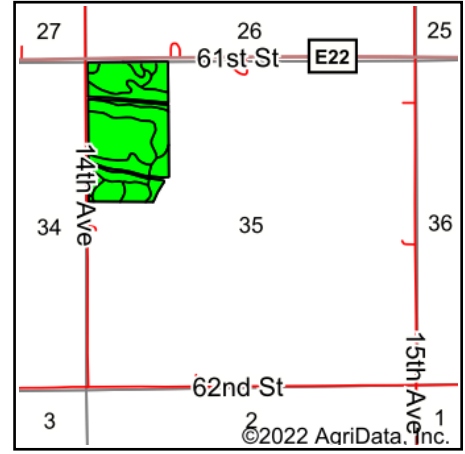
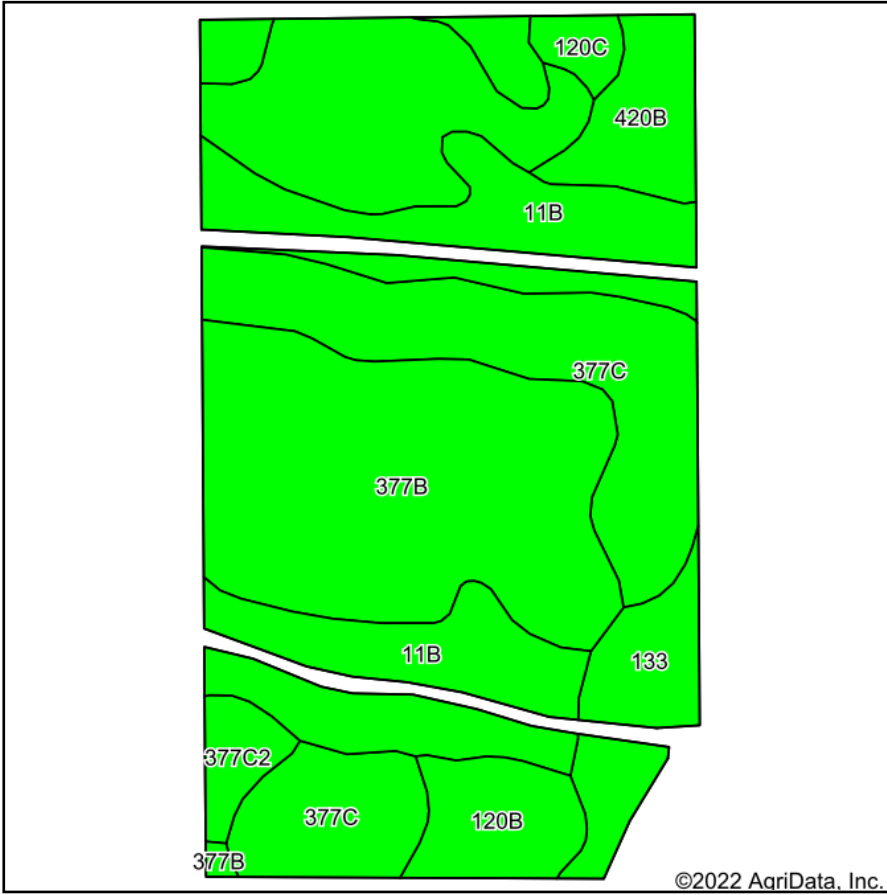


Soils Map



State: **Iowa**
 County: **Benton**
 Location: **35-85N-12W**
 Township: **Monroe**
 Acres: **63.6**
 Date: **10/17/2022**



Maps Provided By:



Soils data provided by USDA and NRCS.

©2022 AgriData, Inc.

© AgriData, Inc. 2021

www.AgriDataInc.com

Area Symbol: IA011, Soil Area Version: 24

Code	Soil Description	Acres	Percent of field	CSR2 Legend	Non-Irr Class *c	CSR2**	CSR	*n NCCPI Overall	*n NCCPI Corn	*n NCCPI Small Grains	*n NCCPI Soybeans	
377C	Dinsdale silty clay loam, 5 to 9 percent slopes	20.56	32.3%		IIIe	90	75	85	85	67	72	
377B	Dinsdale silty clay loam, 2 to 5 percent slopes	18.30	28.8%		IIe	94	90	87	87	68	74	
11B	Colo-Ely complex, 0 to 5 percent slopes	13.22	20.8%		IIw	86	68	92	92	64	76	
133	Colo silty clay loam, 0 to 2 percent slopes, occasionally flooded	3.59	5.6%		IIw	78	80	77	77	34	75	
420B	Tama silty clay loam, terrace, 2 to 5 percent slopes	2.90	4.6%		IIe	95	95	98	98	79	80	
120B	Tama silty clay loam, 2 to 5 percent slopes	2.89	4.5%		IIe	95	95	97	97	79	80	
377C2	Dinsdale silty clay loam, 5 to 9 percent slopes, eroded	1.28	2.0%		IIIe	85	73	80	80	64	63	
120C	Tama silty clay loam, 5 to 9 percent slopes	0.86	1.4%		IIIe	90	80	93	93	78	77	
Weighted Average						2.36	90	80	*n 87.7	*n 87.7	*n 66	*n 74.2

**IA has updated the CSR values for each county to CSR2.

*n: The aggregation method is "Weighted Average using all components"

*c: Using Capabilities Class Dominant Condition Aggregation Method

Soils data provided by USDA and NRCS.