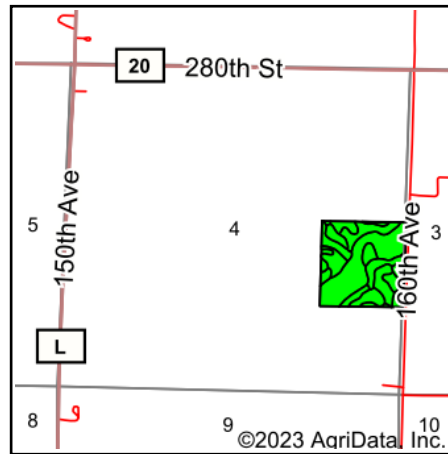
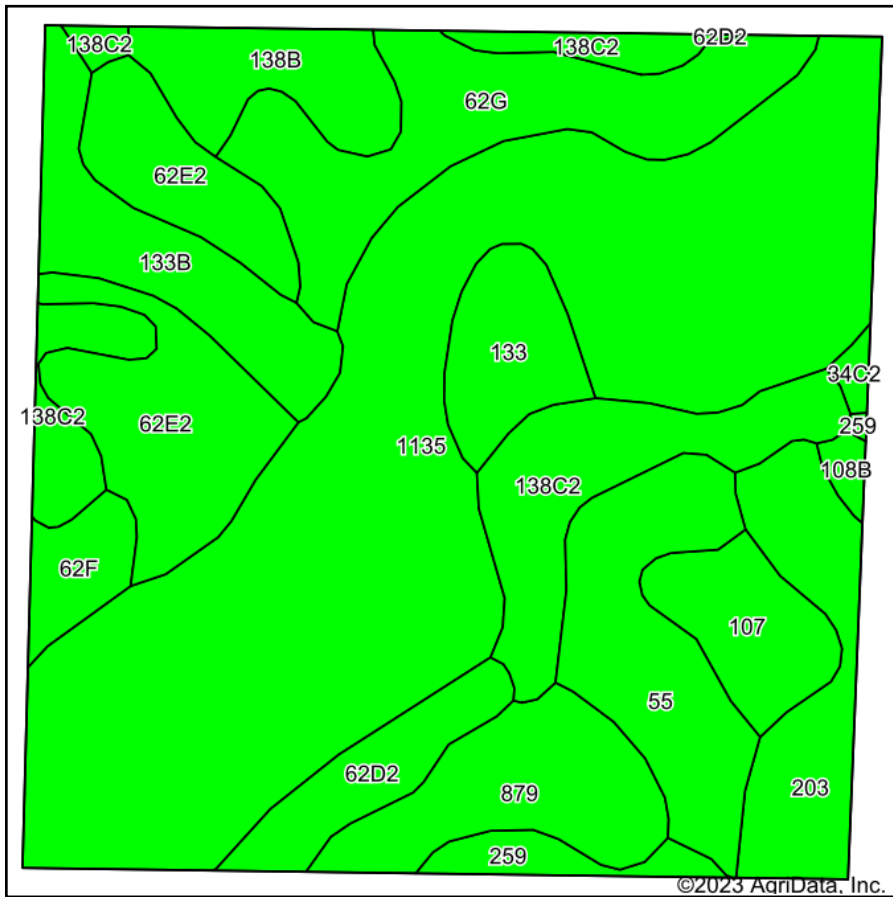


# Soils Map



State: **Iowa**  
 County: **Kossuth**  
 Location: **4-96N-28W**  
 Township: **Plum Creek**  
 Acres: **39.32**  
 Date: **8/23/2023**



Maps Provided By:  
  
 CUSTOMIZED ONLINE MAPPING  
 © AgriData, Inc. 2023 www.AgriDataInc.com



Soils data provided by USDA and NRCS.

Area Symbol: IA109, Soil Area Version: 29

Code	Soil Description	Acres	Percent of field	CSR2 Legend	Non-Irr Class *c	CSR2**	CSR	*n NCCPI Overall	*n NCCPI Corn	*n NCCPI Small Grains	*n NCCPI Soybeans	
1135	Coland clay loam, 0 to 2 percent slopes, frequently flooded	14.49	36.9%		Vw	13	25	37	25	34	17	
62E2	Storden loam, 10 to 22 percent slopes, moderately eroded	3.46	8.8%		IVe	32	30	59	58	46	58	
138C2	Clarion loam, 6 to 10 percent slopes, moderately eroded	3.38	8.6%		IIle	83	62	70	68	52	70	
62G	Belview loam, 22 to 40 percent slopes	3.30	8.4%		VIIe	10	5	24	24	19	18	
55	Nicollet clay loam, 1 to 3 percent slopes	2.57	6.5%		Iw	89	85	81	81	64	81	
879	Fostoria loam, 0 to 2 percent slopes	2.00	5.1%		Iw	95	85	80	80	59	75	
203	Cylinder loam, 0 to 2 percent slopes	1.92	4.9%		IIIs	58	74	72	72	56	65	
133B	Colo silty clay loam, 2 to 4 percent slopes	1.90	4.8%		IIw	70	61	94	94	56	78	
138B	Clarion loam, 2 to 6 percent slopes	1.36	3.5%		Ile	89	77	83	78	62	83	
107	Webster clay loam, 0 to 2 percent slopes	1.23	3.1%		IIw	86	80	82	78	60	82	
133	Colo silty clay loam, 0 to 2 percent slopes	1.19	3.0%		IIw	74	75	79	78	30	79	
62D2	Storden loam, 10 to 16 percent slopes, moderately eroded	1.10	2.8%		IVe	41	39	65	62	46	65	
62F	Belview loam, 16 to 30 percent slopes	0.65	1.7%		Vle	17	11	53	53	36	52	
259	Biscay clay loam, 0 to 2 percent slopes	0.50	1.3%		IIw	52	73	69	69	51	66	
108B	Wadena loam, 2 to 6 percent slopes	0.15	0.4%		Ile	52		62	62	51	51	
34C2	Estherville sandy loam, 5 to 14 percent slopes, moderately eroded	0.12	0.3%		IVs	6	8	44	44	36	25	
<b>Weighted Average</b>						<b>3.80</b>	<b>42.8</b>	<b>*</b>	<b>*n 56</b>	<b>*n 51</b>	<b>*n 43</b>	<b>*n 46.6</b>

\*\*IA has updated the CSR values for each county to CSR2.

\* - CSR weighted average cannot be calculated on the current soils data, use prior data version for csr values.

\*n: The aggregation method is "Weighted Average using all components"

\*c: Using Capabilities Class Dominant Condition Aggregation Method

Soils data provided by USDA and NRCS.