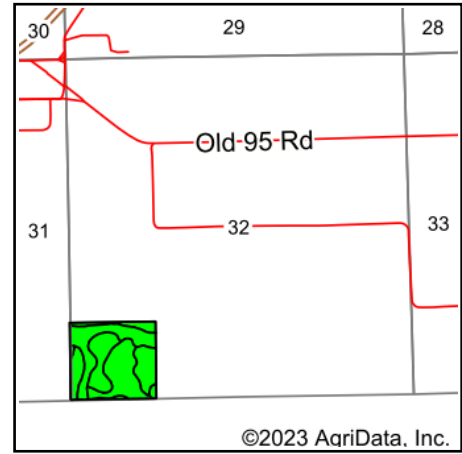
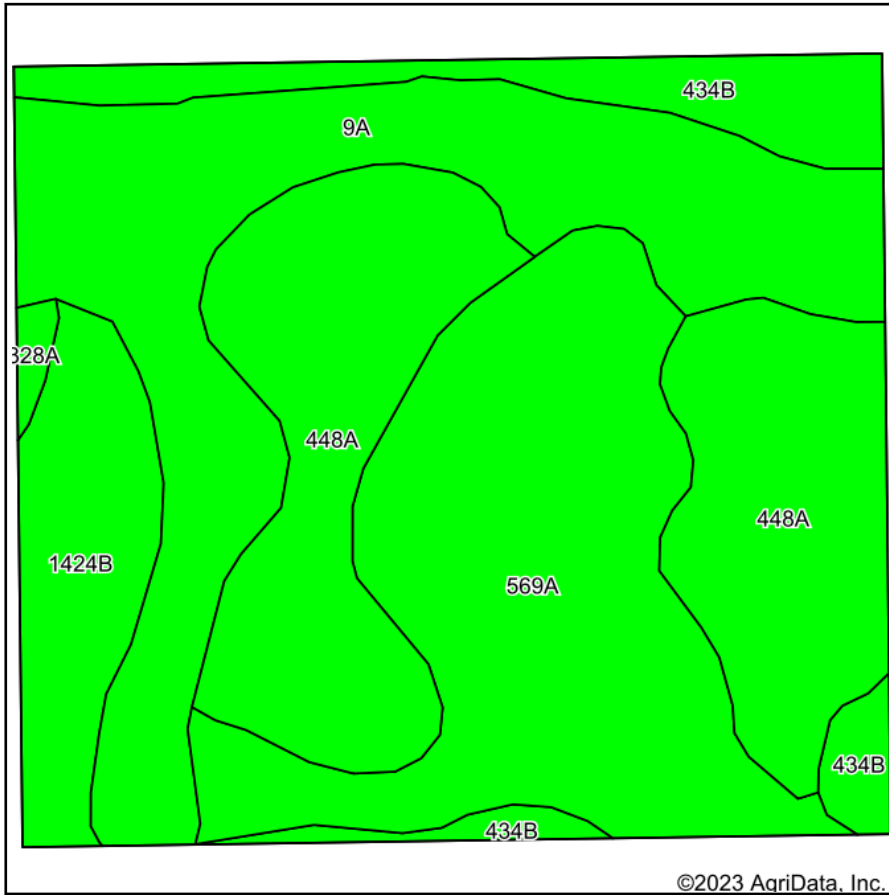


Soils Map



State: **Wisconsin**
 County: **Jackson**
 Location: **32-23N-4W**
 Township: **Alma**
 Acres: **36.04**
 Date: **7/26/2023**



Maps Provided By:



Soils data provided by USDA and NRCS.

Area Symbol: WI053, Soil Area Version: 21

Code	Soil Description	Acres	Percent of field	Non-Irr Class Legend	Non-Irr Class *c	Corn Bu	Soybeans Bu	*n NCCPI Overall	*n NCCPI Corn	*n NCCPI Small Grains	*n NCCPI Soybeans
448A	Sooner silt loam, 0 to 3 percent slopes	10.32	28.6%		IIw	105	35	74	74	64	65
569A	Newlang muck, 0 to 2 percent slopes, frequently flooded	9.91	27.5%		VIw			13	13	9	13
9A	Houghton and Palms mucks, 0 to 1 percent slopes, frequently flooded	9.60	26.6%		VIIw	120	42	5	3	4	2
434B	Bilson sandy loam, 1 to 6 percent slopes	3.04	8.4%		IIIs	95	32	65	65	56	53
1424B	Merit-Gardenvale silt loams, 1 to 6 percent slopes	2.97	8.2%		Ile	105	32	67	67	63	52
328A	Rowley silt loam, 0 to 3 percent slopes	0.20	0.6%		IIw			88	87	76	87
Weighted Average								*n 37.6	*n 37.1	*n 32.2	*n 32

*n: The aggregation method is "Weighted Average using all components"

*c: Using Capabilities Class Dominant Condition Aggregation Method

Soils data provided by USDA and NRCS.