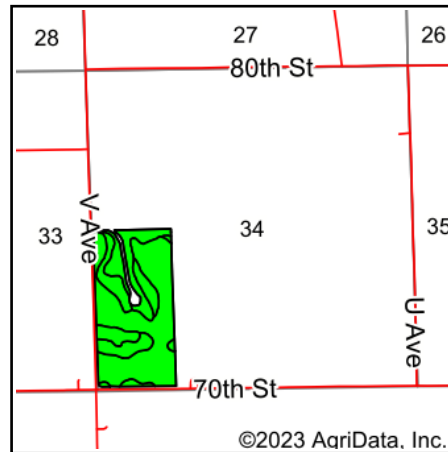
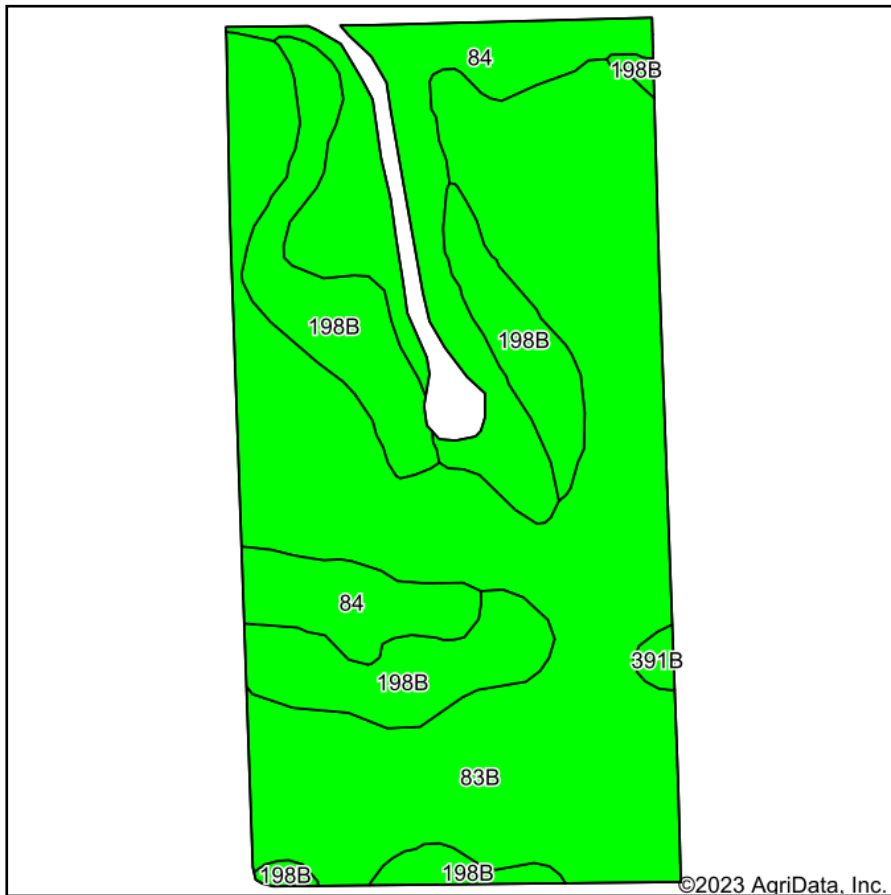


Soils Map



State: **Iowa**
 County: **Fayette**
 Location: **34-92N-10W**
 Township: **Fremont**
 Acres: **74.24**
 Date: **7/24/2023**



Maps Provided By:



Soils data provided by USDA and NRCS.

©2023 AgriData, Inc.

© AgriData, Inc. 2023

www.AgriDataInc.com

Area Symbol: IA065, Soil Area Version: 27

Code	Soil Description	Acres	Percent of field	CSR2 Legend	Non-Irr Class *c	CSR2**	CSR	*n NCCPI Overall	*n NCCPI Corn	*n NCCPI Small Grains	*n NCCPI Soybeans	
83B	Kenyon loam, 2 to 5 percent slopes	44.23	59.6%		lle	90	85	87	86	66	71	
198B	Floyd loam, 1 to 4 percent slopes	14.90	20.1%		llw	89	80	88	83	63	88	
84	Clyde clay loam, 0 to 3 percent slopes	14.72	19.8%		llw	88	75	90	90	75	85	
391B	Clyde-Floyd complex, 1 to 4 percent slopes	0.39	0.5%		llw	87	73	89	87	70	86	
Weighted Average						2.00	89.4	82	*n 87.8	*n 86.2	*n 67.2	*n 77.3

**IA has updated the CSR values for each county to CSR2.

*n: The aggregation method is "Weighted Average using all components"

*c: Using Capabilities Class Dominant Condition Aggregation Method

Soils data provided by USDA and NRCS.