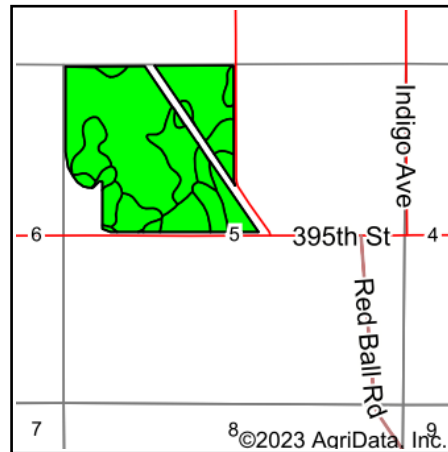
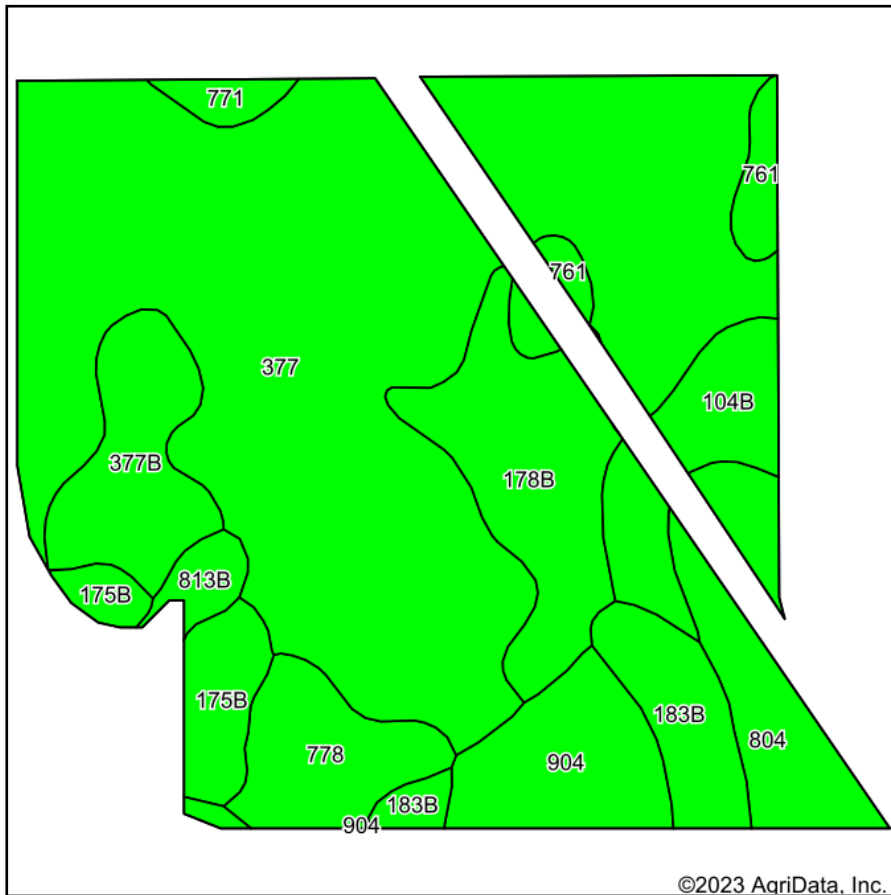


Soils Map



State: **Iowa**
 County: **Mitchell**
 Location: **5-98N-17W**
 Township: **Mitchell**
 Acres: **140**
 Date: **8/16/2023**



Maps Provided By:



Soils data provided by USDA and NRCS.

©2023 AgriData, Inc.

© AgriData, Inc. 2023

www.AgriDataInc.com

Area Symbol: IA131, Soil Area Version: 28

Code	Soil Description	Acres	Percent of field	CSR2 Legend	Non-Irr Class *c	CSR2**	CSR	*n NCCPI Overall	*n NCCPI Corn	*n NCCPI Small Grains	*n NCCPI Soybeans	
377	Dinsdale silty clay loam, 0 to 2 percent slopes	75.74	54.1%		le	99	93	85	85	70	73	
178B	Waukee silt loam, 2 to 5 percent slopes	11.53	8.2%		lle	63	74	72	72	65	47	
804	Ashdale silt loam, 0 to 2 percent slopes	7.87	5.6%		l	80	90	85	85	75	69	
377B	Dinsdale silty clay loam, 2 to 5 percent slopes	7.75	5.5%		lle	94	88	87	87	68	74	
904	Nasset silt loam, 0 to 2 percent slopes	7.44	5.3%		le	66	85	77	77	70	58	
104B	Rockton silt loam, 20 to 30 inches to limestone, till plain, 2 to 5 percent slopes	6.53	4.7%		lle	49	70	54	54	42	37	
183B	Dubuque silt loam, moderately deep, 2 to 5 percent slopes	6.39	4.6%		lle	42	53	61	61	61	46	
778	Sattre silt loam, 0 to 2 percent slopes	6.38	4.6%		lls	56	74	66	66	62	44	
175B	Dickinson fine sandy loam, 2 to 5 percent slopes	4.76	3.4%		llle	50	55	60	60	53	36	
761	Franklin silt loam, 1 to 3 percent slopes	2.83	2.0%		lw	85	83	89	89	63	76	
813B	Atkinson loam, till plain, 2 to 5 percent slopes	1.56	1.1%		lle	60	80	65	65	48	49	
771	Waubeek silt loam, 0 to 2 percent slopes	1.22	0.9%		l	93	88	85	85	60	78	
Weighted Average						1.35	83.6	85.1	*n 79.2	*n 79.2	*n 66.6	*n 64.2

**IA has updated the CSR values for each county to CSR2.

*n: The aggregation method is "Weighted Average using all components"

*c: Using Capabilities Class Dominant Condition Aggregation Method

Soils data provided by USDA and NRCS.