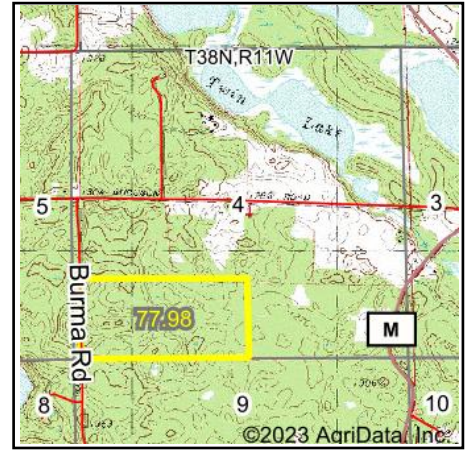
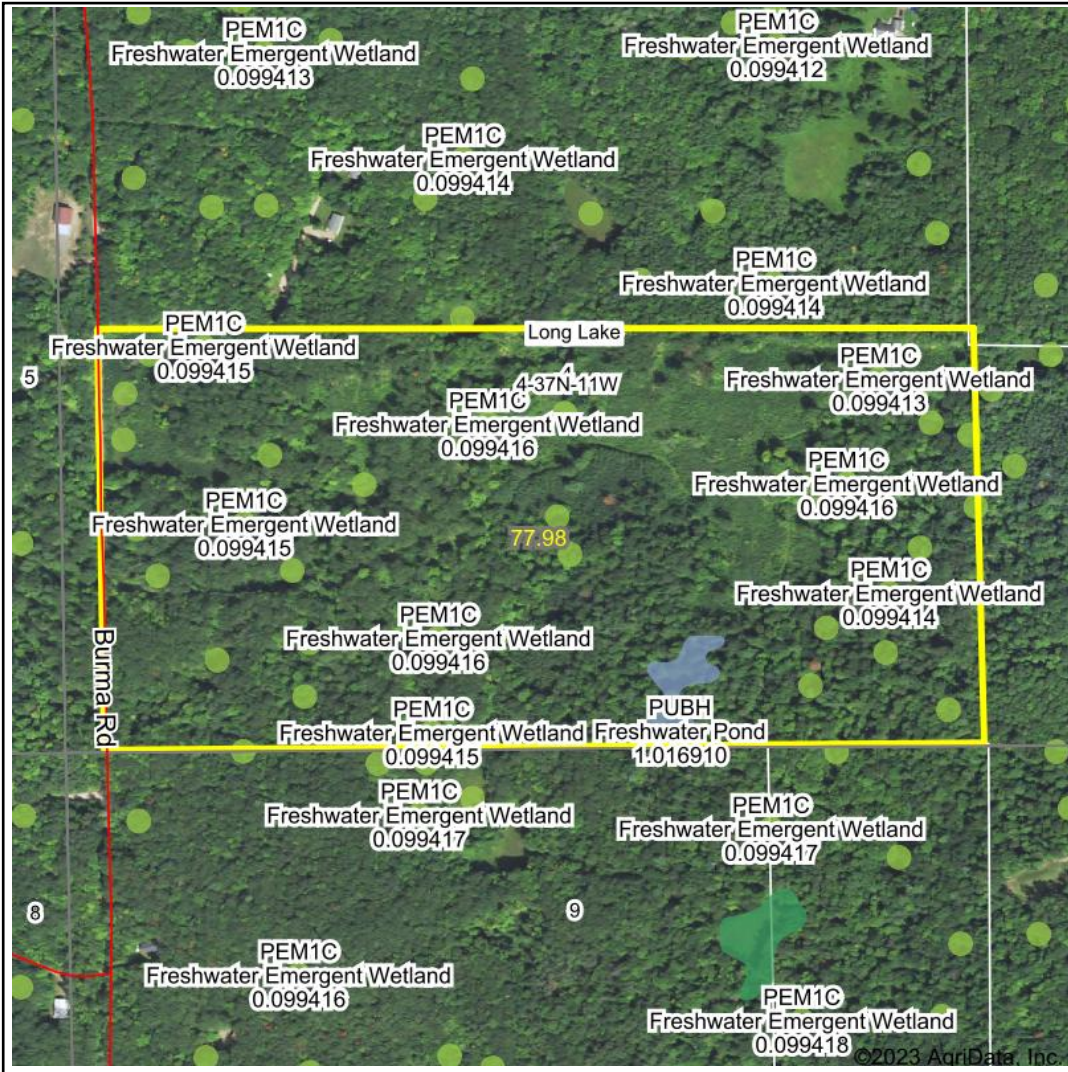


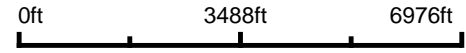
Wetlands Map



State: Wisconsin
Location: 4-37N-11W
County: Washburn
Township: Long Lake
Date: 7/25/2023


HIGH POINT
 LAND COMPANY
 Maps Provided By:

surety[®]
 CUSTOMIZED ONLINE MAPPING
© AgriData, Inc. 2023 www.AgriDataInc.com



Classification Code	Type	Acres
PEM1C	Freshwater Emergent Wetland	3.08
PUBH	Freshwater Pond	0.93
Total Acres		4.01

Data Source: National Wetlands Inventory website. U.S. Dol, Fish and Wildlife Service, Washington, D.C. <http://www.fws.gov/wetlands/>