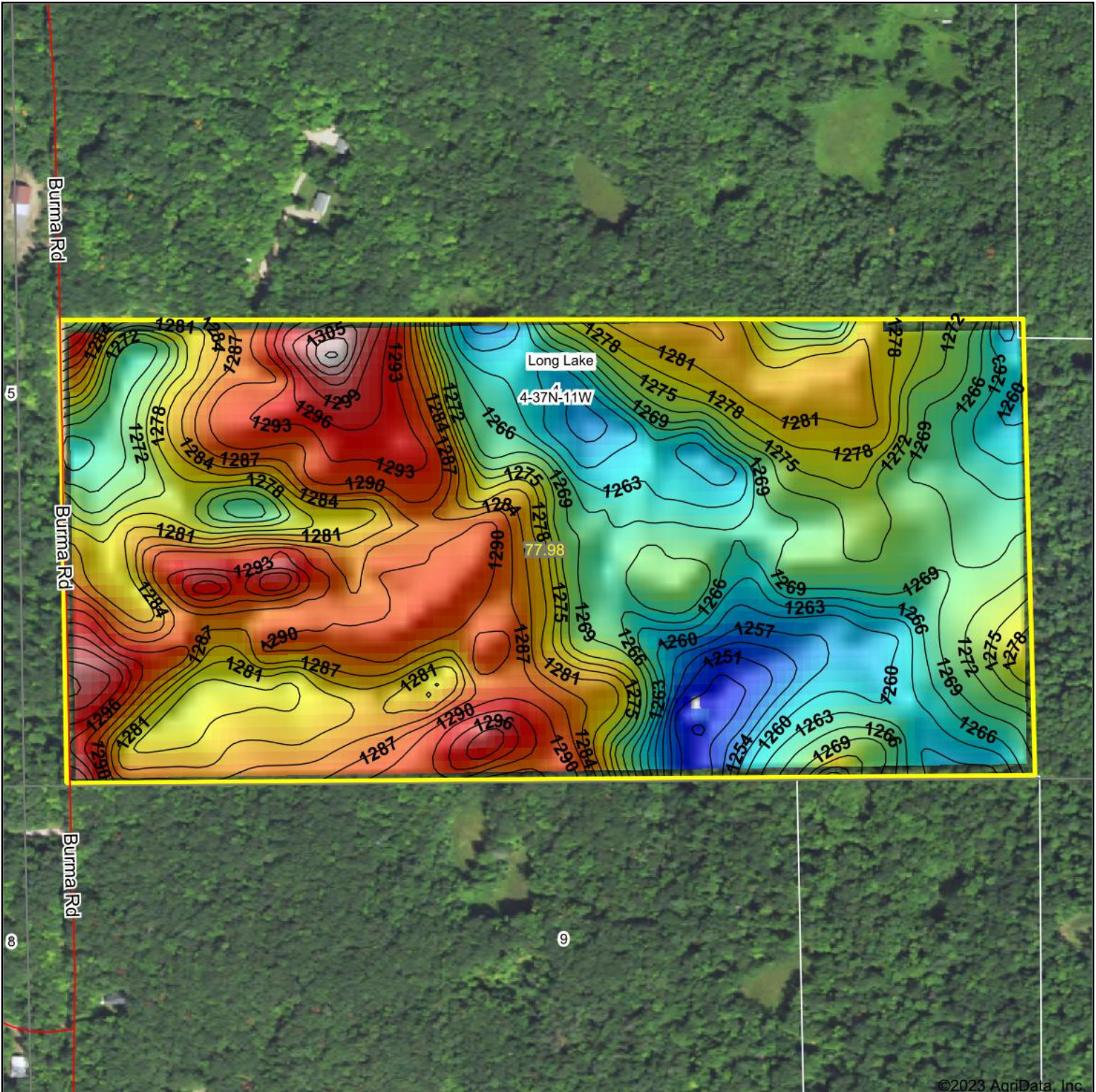


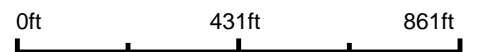
Topography Hillshade



©2023 AgriData, Inc.



Source: USGS 10 meter dem



Interval(ft): 3

Min: 1,245.1

Max: 1,311.8

Range: 66.7

Average: 1,276.4

Standard Deviation: 12.4 ft



7/25/2023

4-37N-11W
Washburn County
Wisconsin

Boundary Center: 45° 42' 45.17, -91° 44' 20.43



Maps Provided By:



© AgriData, Inc. 2023 www.AgriDataInc.com

Field borders provided by Farm Service Agency as of 5/21/2008.