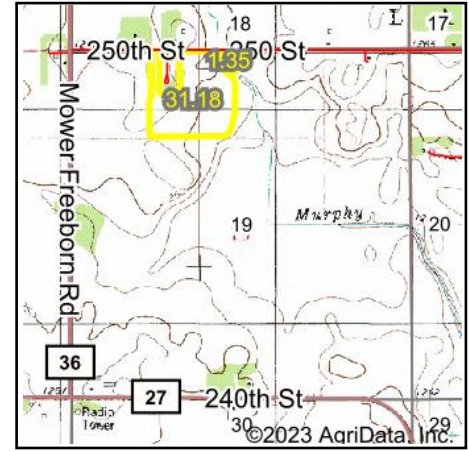


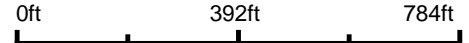
Wetlands Map



State: Minnesota
Location: 19-103N-18W
County: Mower
Township: Lansing
Date: 7/11/2023


HIGH POINT
 LAND COMPANY
 Maps Provided By:

surety
CUSTOMIZED ONLINE MAPPING
© AgriData, Inc. 2023 www.AgriDataInc.com



Classification Code	Type	Acres
PEM1A	Freshwater Emergent Wetland	3.73
PUBH	Freshwater Pond	3.15
PEM1C	Freshwater Emergent Wetland	2.03
PEM1B	Freshwater Emergent Wetland	1.56
Total Acres		10.47

Data Source: National Wetlands Inventory website. U.S. DoI, Fish and Wildlife Service, Washington, D.C. <http://www.fws.gov/wetlands/>