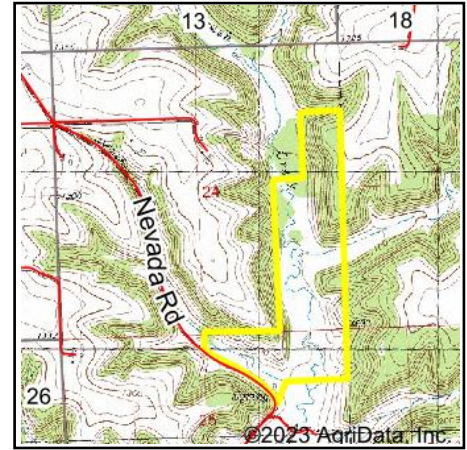
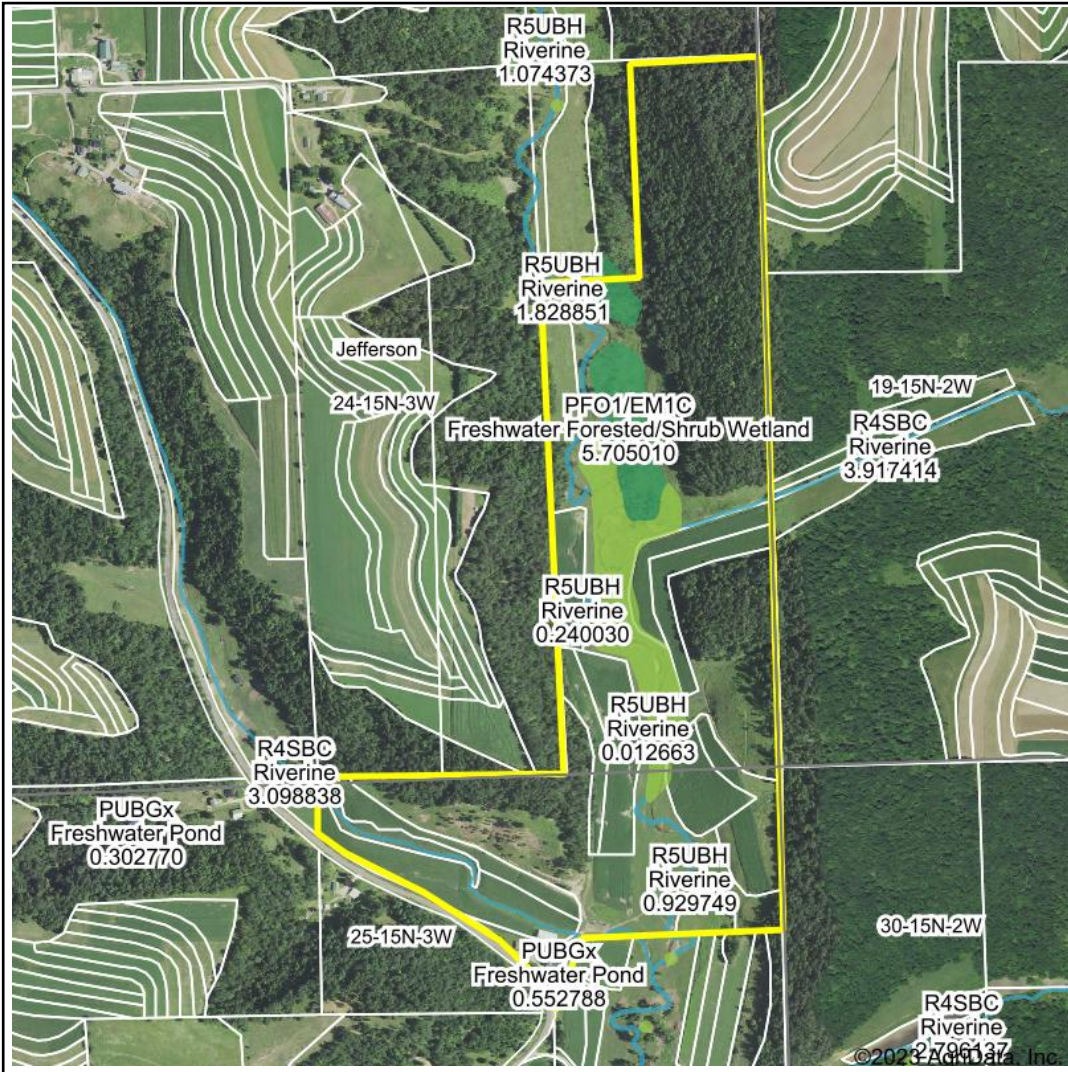
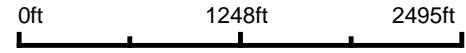


# Wetlands Map



**State:** Wisconsin  
**Location:** 24-15N-3W  
**County:** Monroe  
**Township:** Jefferson  
**Date:** 2/22/2023



Classification Code	Type	Acres
PEM1A	Freshwater Emergent Wetland	11.01
PFO1/EM1C	Freshwater Forested/Shrub Wetland	5.71
R5UBH	Riverine	2.11
R4SBC	Riverine	1.20
PFO1C	Freshwater Forested/Shrub Wetland	1.15
PUBGx	Freshwater Pond	0.45
PEM1C	Freshwater Emergent Wetland	0.10
Total Acres		21.73

Data Source: National Wetlands Inventory website. U.S. DoI, Fish and Wildlife Service, Washington, D.C. <http://www.fws.gov/wetlands/>