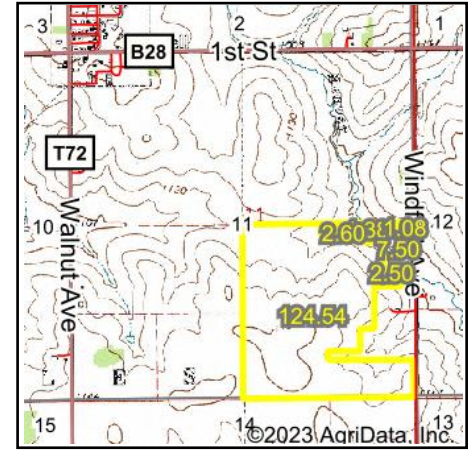


Wetlands Map



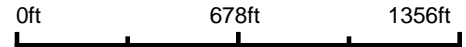
State: **Iowa**
 Location: **11-96N-15W**
 County: **Floyd**
 Township: **Niles**
 Date: **7/13/2023**



Maps Provided By:



© AgriData, Inc. 2023 www.AgriDataInc.com



Classification Code	Type	Acres
R2UBG	Riverine	1.10
PEM1C	Freshwater Emergent Wetland	0.07
PSS1C	Freshwater Forested/Shrub Wetland	0.04
R2UBGx	Riverine	0.02
Total Acres		1.23

Data Source: National Wetlands Inventory website. U.S. DoI, Fish and Wildlife Service, Washington, D.C. <http://www.fws.gov/wetlands/>