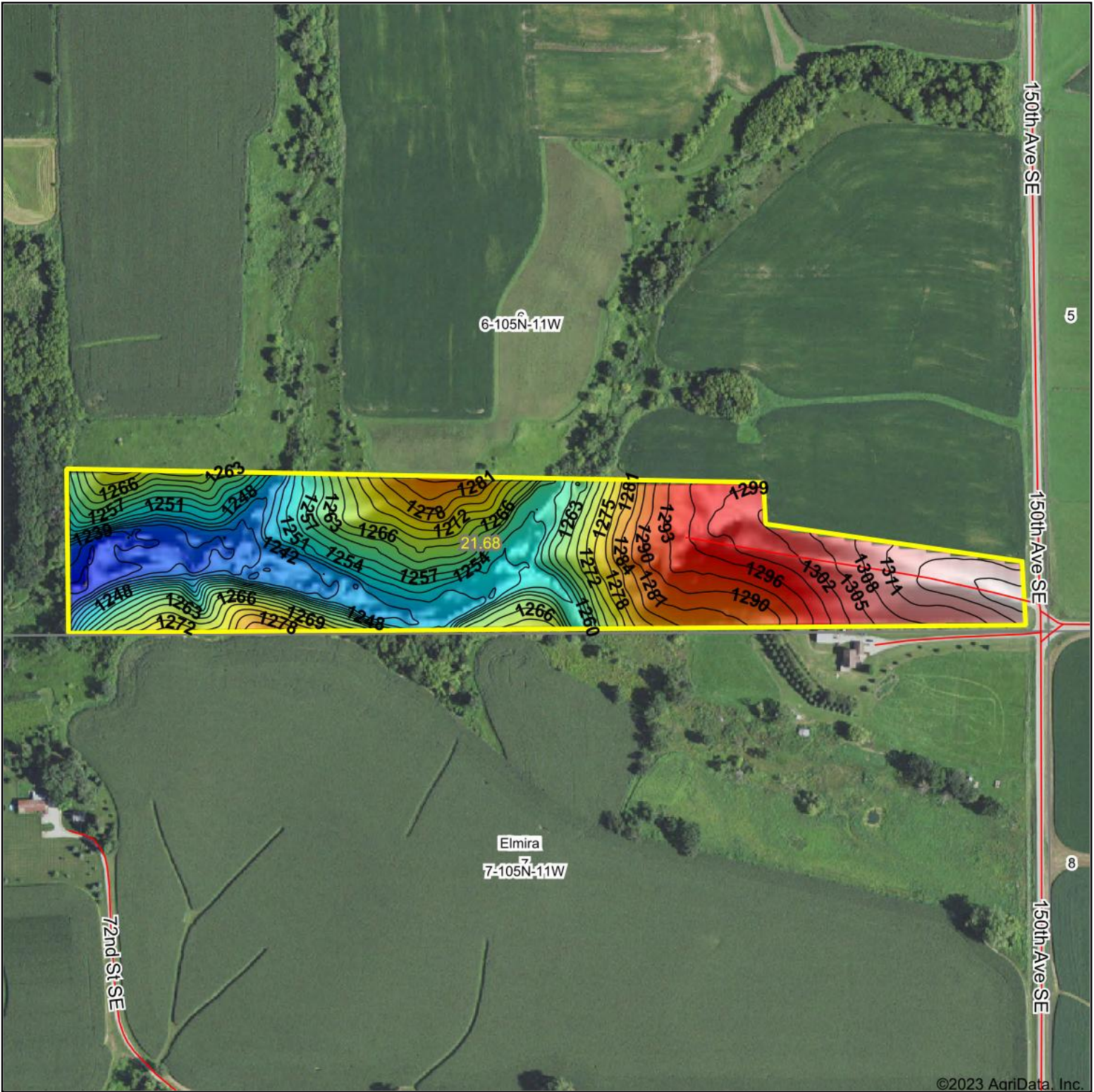


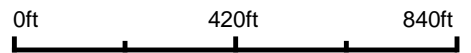
Topography Hillshade



©2023 AgriData, Inc.



Source: USGS 3 meter dem
 Interval(ft): 3
 Min: 1,228.0
 Max: 1,319.0
 Range: 91.0
 Average: 1,270.5
 Standard Deviation: 23.43 ft



6-105N-11W
Olmsted County
Minnesota

Boundary Center: 43° 55' 11.82, -92° 11' 2.92



Maps Provided By:



© AgriData, Inc. 2023

www.AgriDataInc.com