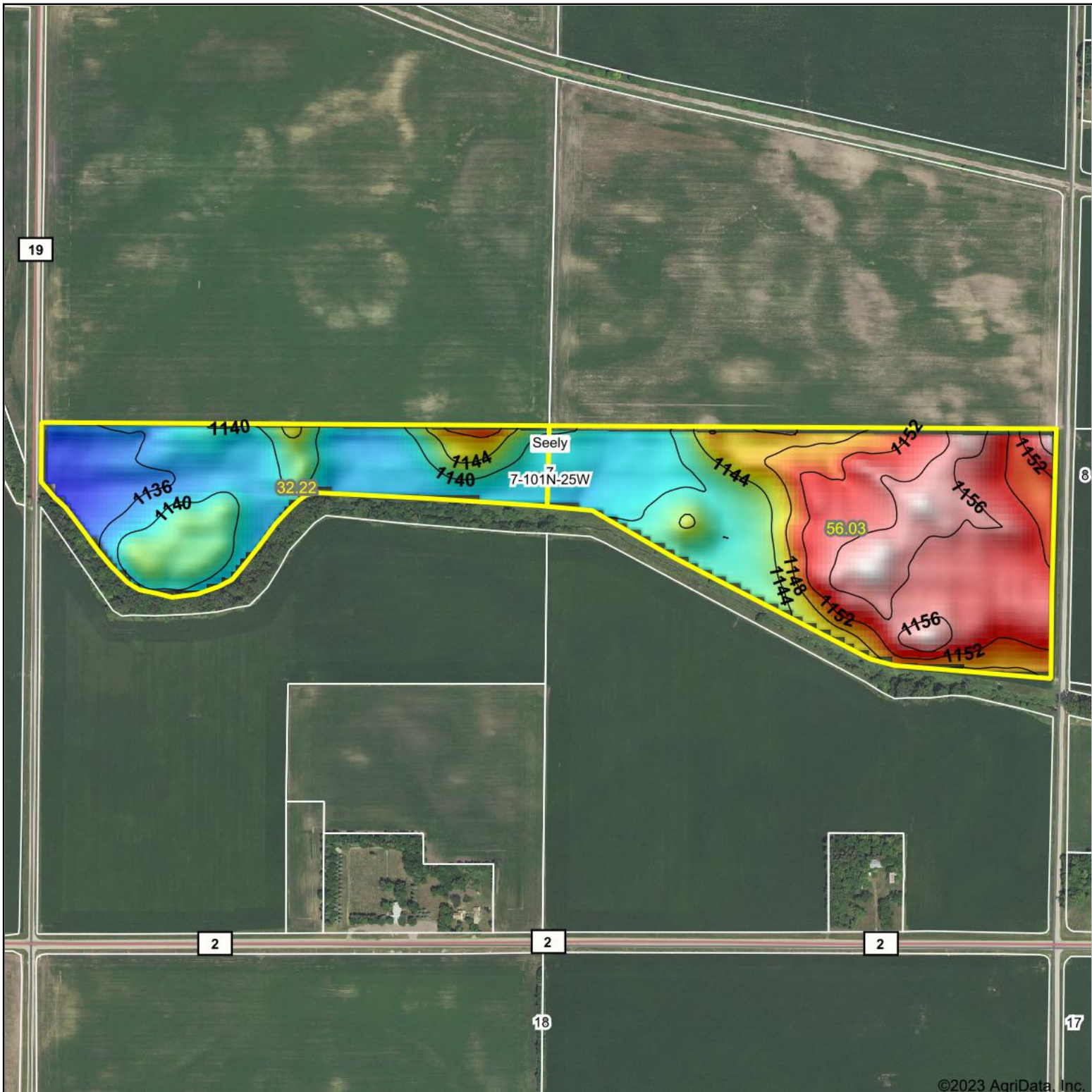
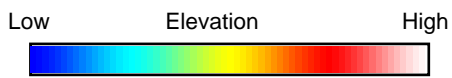


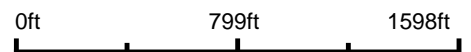
Topography Hillshade



©2023 AgriData, Inc.



Source: USGS 10 meter dem



Interval(ft): 4

Min: 1,132.6

Max: 1,159.1

Range: 26.5

Average: 1,145.7

Standard Deviation: 7.55 ft



7/5/2023

7-101N-25W
Faribault County
Minnesota

Boundary Center: 43° 33' 47.84, -93° 52' 42.07



Maps Provided By:



© AgriData, Inc. 2023 www.AgriDataInc.com

Field borders provided by Farm Service Agency as of 5/21/2008.