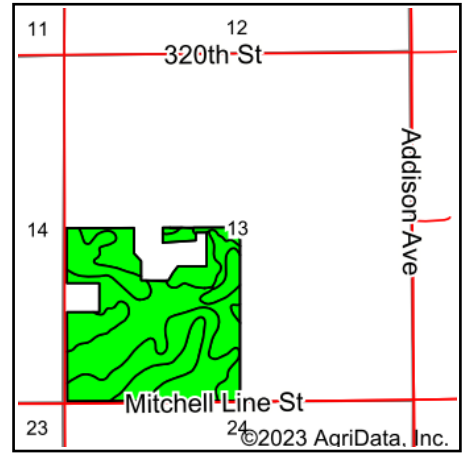
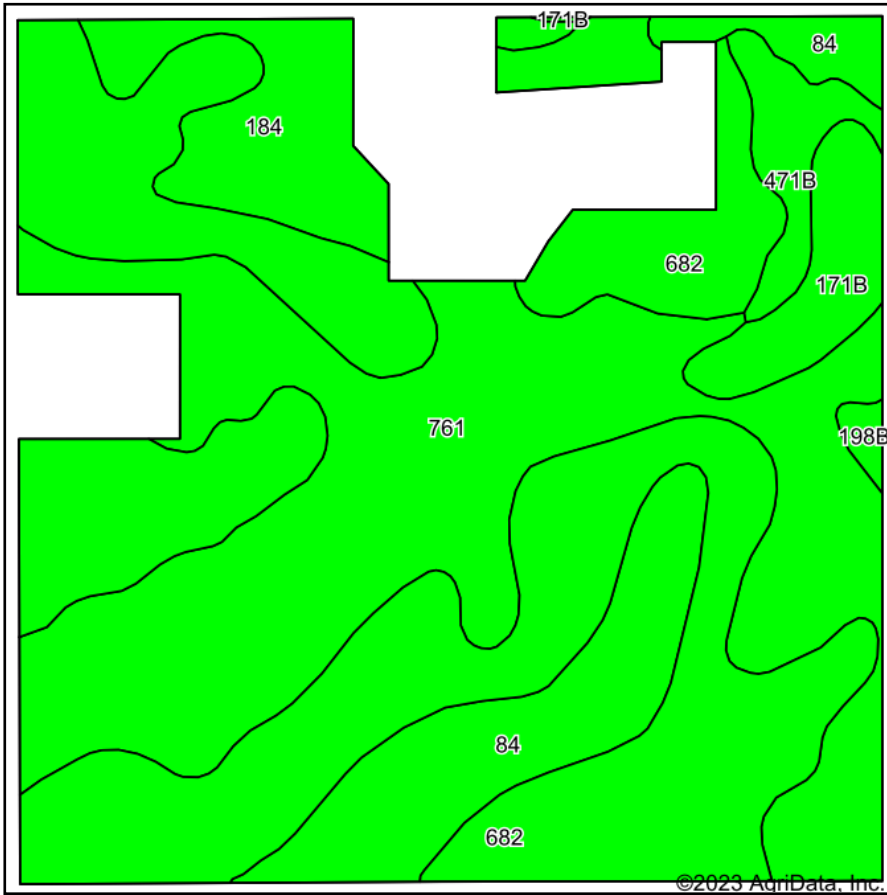


# Soils Map



State: **Iowa**  
 County: **Mitchell**  
 Location: **13-97N-15W**  
 Township: **East Lincoln**  
 Acres: **140.63**  
 Date: **7/13/2023**



Maps Provided By:



Soils data provided by USDA and NRCS.

Area Symbol: IA067, Soil Area Version: 28  
 Area Symbol: IA131, Soil Area Version: 28

Code	Soil Description	Acres	Percent of field	CSR2 Legend	Non-Irr Class *c	CSR2**	CSR	Corn Bu	Soybeans Bu	*n NCCPI Overall	*n NCCPI Corn	*n NCCPI Small Grains	*n NCCPI Soybeans	
682	Maxfield silt loam, 0 to 2 percent slopes	62.39	44.4%		llw	83				78	78	52	65	
761	Franklin silt loam, 1 to 3 percent slopes	46.50	33.1%		lw	85	83			89	89	63	76	
84	Clyde silty clay loam, 0 to 3 percent slopes	13.87	9.9%		llw	88	73			90	90	74	85	
184	Klinger silty clay loam, 1 to 4 percent slopes	8.43	6.0%		lw	95	93			88	88	79	82	
171B	Bassett loam, 2 to 5 percent slopes	4.95	3.5%		lle	85	78	215	62	85	85	68	73	
471B	Oran loam, 2 to 5 percent slopes	3.90	2.8%		lw	74	78			77	77	52	57	
198B	Floyd loam, 1 to 4 percent slopes	0.59	0.4%		llw	89	78			88	83	63	88	
<b>Weighted Average</b>						<b>1.58</b>	<b>84.7</b>	<b>*-</b>	<b>7.6</b>	<b>2.2</b>	<b>*n 83.7</b>	<b>*n 83.7</b>	<b>*n 60</b>	<b>*n 71.8</b>

\*\*IA has updated the CSR values for each county to CSR2.

\*- CSR weighted average cannot be calculated on the current soils data, use prior data version for csr values.

\*n: The aggregation method is "Weighted Average using all components"

\*c: Using Capabilities Class Dominant Condition Aggregation Method

Soils data provided by USDA and NRCS.