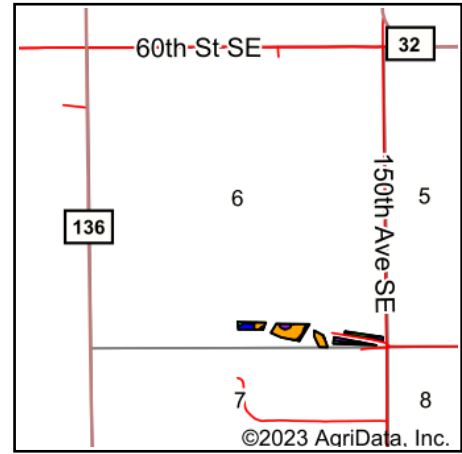
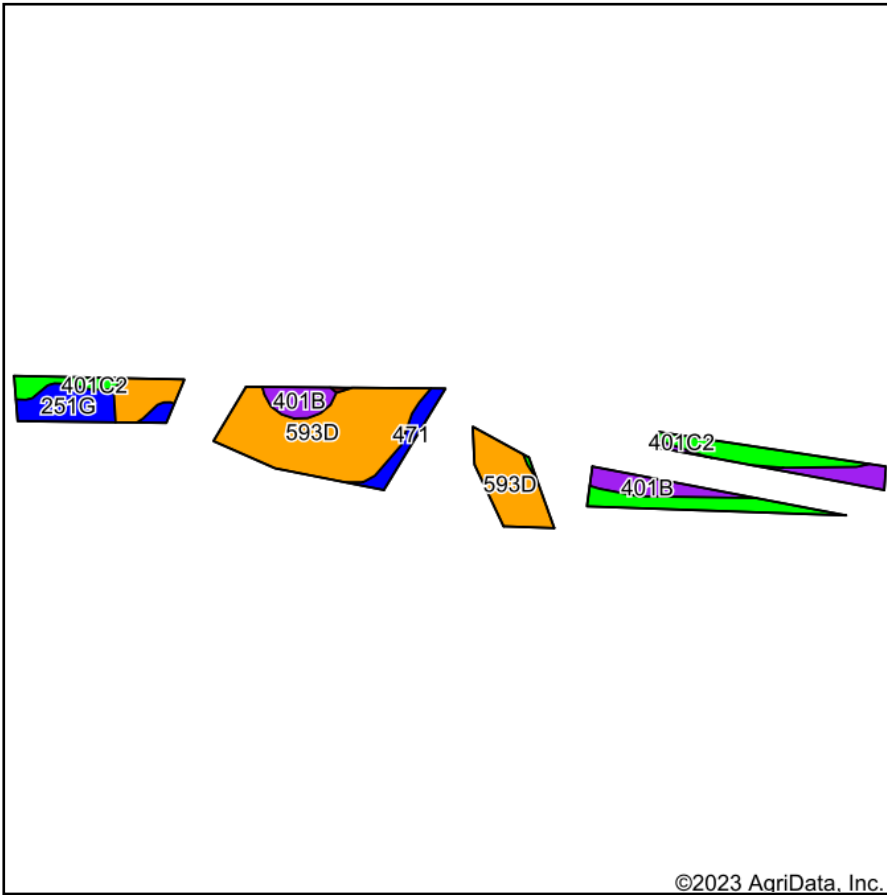


# Soils Map



State: **Minnesota**  
 County: **Olmsted**  
 Location: **7-105N-11W**  
 Township: **Elmira**  
 Acres: **7.51**  
 Date: **7/25/2023**



Maps Provided By:



Area Symbol: MN109, Soil Area Version: 17

Code	Soil Description	Acres	Percent of field	PI Legend	Non-Irr Class *c	Productivity Index	*n NCCPI Overall	*n NCCPI Corn	*n NCCPI Small Grains	*n NCCPI Soybeans	
593D	Elbaville silt loam, 12 to 18 percent slopes	3.91	52.1%		IVe	53	65	65	60	63	
401C2	Mt. Carroll silt loam, 6 to 12 percent slopes, moderately eroded	1.44	19.2%		IIIe	80	80	80	68	69	
401B	Mt. Carroll silt loam, 2 to 6 percent slopes, moderately eroded	1.13	15.0%		Ile	90	82	82	70	72	
251G	Marlean silty clay loam, 40 to 80 percent slopes	0.62	8.3%		VIIe	4	13	12	13	7	
471	Root silt loam	0.41	5.5%		Vw	20	21	19	19	21	
<b>Weighted Average</b>						<b>3.81</b>	<b>57.9</b>	<b>*n 63.7</b>	<b>*n 63.5</b>	<b>*n 56.9</b>	<b>*n 58.6</b>

\*n: The aggregation method is "Weighted Average using all components"

\*c: Using Capabilities Class Dominant Condition Aggregation Method

Soils data provided by USDA and NRCS.