

1. Name and Address of Person

Don Rogers
Rt 2 Box 17
Brewster Mn 56119-9607



2. Date of Request

8-19-93

3. County

Jackson

**HIGHLY ERODIBLE LAND AND WETLAND
CONSERVATION DETERMINATION**

4. Name of USDA Agency or Person Requesting Determination

ASCS

5. Farm No. and Tract No.

4032 10617

SECTION I - HIGHLY ERODIBLE LAND

- 3. Is soil survey now available for making a highly erodible land determination? Yes No
- 7. Are there highly erodible soil map units on this farm? Yes No
- 8. List highly erodible fields that, according to ASCS records, were used to produce an agricultural commodity in any crop year during 1981-1985.
- 9. List highly erodible fields that have been or will be converted for the production of agricultural commodities and, according to ASCS records, were not used for this purpose in any crop year during 1981-1985; and were not enrolled in a USDA set-aside or diversion program.
- 10. This Highly Erodible Land determination was completed in the: Office Field

FIELD NO.(s)	TOTAL ACRES
NONE	

SECTION II - WETLAND

- 1. Are there hydric soils on this farm? Yes No
- 2. Wetlands (W), including abandoned wetlands, or Farmed Wetlands (FW) or Farmed Wetlands Pasture (FWP). Wetlands may be farmed under natural conditions. Farmed Wetlands and Farmed Wetlands Pasture may be farmed and maintained in the same manner as they were prior to December 23, 1985, as long as they are not abandoned.
- 3. Prior Converted Cropland (PC). Wetlands that were converted prior to December 23, 1985. The use, management, drainage, and alteration of prior converted cropland (PC) are not subject to the wetland conservation provisions unless the area reverts to wetland as a result of abandonment.
- 4. Artificial Wetlands (AW). Artificial wetlands includes irrigation-induced wetlands. These wetlands are not subject to the wetland conservation provisions.
- 5. Minimal Effect Wetlands (MW). These wetlands are to be farmed according to the minimal-effect agreement signed at the time the minimal-effect determination was made.
- 6. Mitigation Wetlands (MIW). Wetlands on which a person is actively mitigating a frequently cropped area or a wetland converted between December 23, 1985 and November 28, 1990.
- 7. Restoration with Violation (RVW-year). A restored wetland that was in violation as a result of conversion after November 28, 1990, or the planting of an agricultural commodity or forage crop.
- 8. Restoration without Violation (RSW). A restored wetland converted between December 23, 1985 and November 28, 1990, on which an agricultural commodity has not been planted.
- 9. Replacement Wetlands (RPW). Wetlands which are converted for purposes other than to increase production, where the wetland values are being replaced at a second site.
- 10. Good Faith Wetlands (GFW+year). Wetlands on which ASCS has determined a violation to be in good faith and the wetland has been restored.
- 11. Converted Wetlands (CW). Wetlands converted after December 23, 1985 and prior to November 28, 1990. In any year that an agricultural commodity is planted on these Converted Wetlands, you will be ineligible for USDA benefits.
- 12. Converted Wetland (CW+year). Wetlands converted after November 28, 1990. You will be ineligible for USDA program benefits until this wetland is restored.
- 13. Converted Wetland Non-Agricultural use (CWNA). Wetlands that are converted for trees, fish production, shrubs, cranberries, vineyards or building and road construction.
- 14. Converted Wetland Technical Error (CWTE). Wetlands that were converted as a result of incorrect determination by SCS.
- 15. The planned alteration measures on wetlands in fields _____ are considered maintenance and are in compliance with FSA.
- 16. The planned alteration measures on wetlands in fields _____ are not considered to be maintenance and if installed will cause the area to become a Converted Wetland (CW). See item 22 for information on CW+year.
- 17. The wetland determination was completed in the office field and was delivered mailed to the person on 10-4-93

FIELD NO.(s)	TOTAL ACRES
NONE	

3. Remarks. *TILE OK. NO HIGHLY ERODIBLE FIELD OR WETLAND*

29. I certify that the above determination is correct and adequate for use in determining eligibility for USDA program benefits, and that wetland hydrology, hydric soils, and hydrophytic vegetation under normal circumstances exist on all areas outlined as Wetlands, Farmed Wetlands, and Farmed Wetlands Pasture.

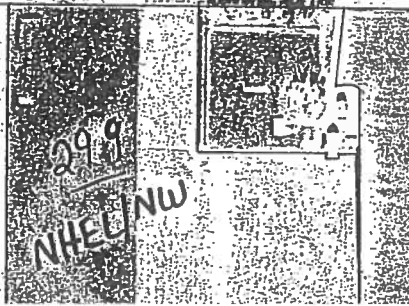
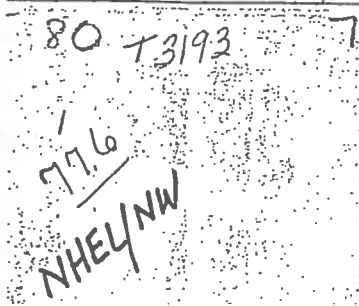
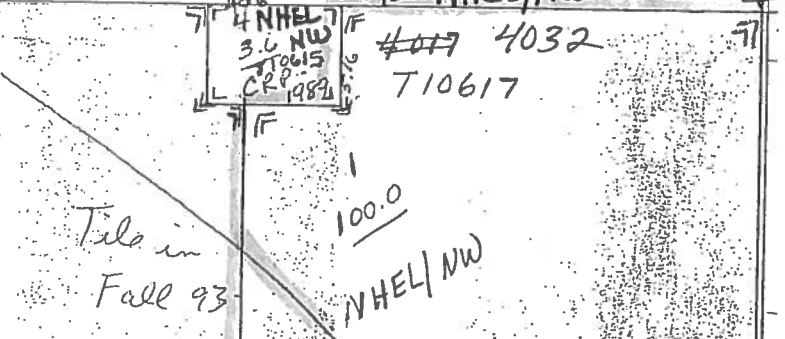
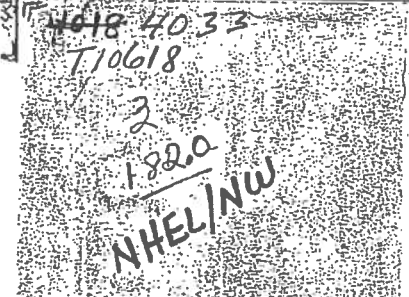
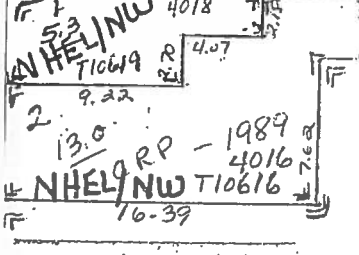
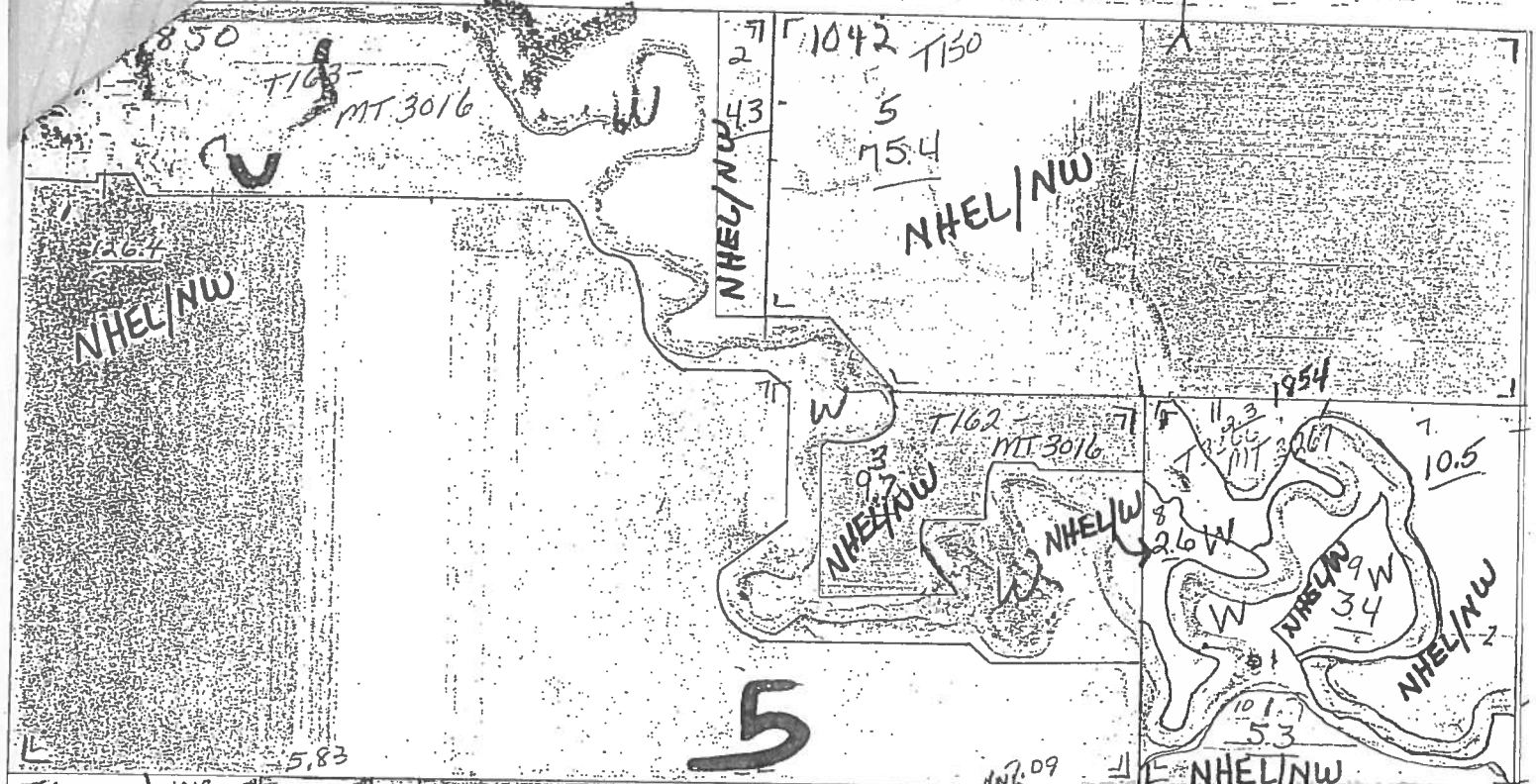
30. Signature of SCS District Conservationist

31. Date

10-4-93

ABA-5

Alba - D-2



A. Conservation Service

SCSCP/A-026
(June 91)

1. Name and Address of Person
Don Rogers
Rt 2 Box 17
Brewster Mo 56119-9607

2. Date of Request
8-19-93
3. County
Jackson

**HIGHLY ERODIBLE LAND AND WETLAND
CONSERVATION DETERMINATION**

4. Name of USDA Agency or Person Requesting Determination
ASCS

5. Farm No. and Tract No.
4033 10618

SECTION I - HIGHLY ERODIBLE LAND

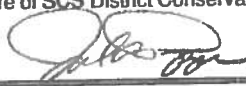
	FIELD NO.(s)	TOTAL ACRES
6. Is soil survey now available for making a highly erodible land determination? Yes <input checked="" type="checkbox"/> No <input type="checkbox"/>		
7. Are there highly erodible soil map units on this farm? Yes <input type="checkbox"/> No <input checked="" type="checkbox"/>		
8. List highly erodible fields that, according to ASCS records, were used to produce an agricultural commodity in any crop year during 1981-1985.	NONE	
9. List highly erodible fields that have been or will be converted for the production of agricultural commodities and, according to ASCS records, were not used for this purpose in any crop year during 1981-1985; and were not enrolled in a USDA set-aside or diversion program.		
10. This Highly Erodible Land determination was completed in the: Office <input checked="" type="checkbox"/> Field <input type="checkbox"/>		

SECTION II - WETLAND

	FIELD NO.(s)	TOTAL ACRES
11. Are there hydric soils on this farm? Yes <input checked="" type="checkbox"/> No <input type="checkbox"/>		
12. Wetlands (W), including abandoned wetlands, or Farmed Wetlands (FW) or Farmed Wetlands Pasture (FWP). Wetlands may be farmed under natural conditions. Farmed Wetlands and Farmed Wetlands Pasture may be farmed and maintained in the same manner as they were prior to December 23, 1985, as long as they are not abandoned.	NONE	
13. Prior Converted Cropland (PC). Wetlands that were converted prior to December 23, 1985. The use, management, drainage, and alteration of prior converted cropland (PC) are not subject to the wetland conservation provisions unless the area reverts to wetland as a result of abandonment.		
14. Artificial Wetlands (AW). Artificial wetlands includes irrigation-induced wetlands. These wetlands are not subject to the wetland conservation provisions.		
15. Minimal Effect Wetlands (MW). These wetlands are to be farmed according to the minimal-effect agreement signed at the time the minimal-effect determination was made.		
16. Mitigation Wetlands (MIW): Wetlands on which a person is actively mitigating a frequently cropped area or a wetland converted between December 23, 1985 and November 28, 1990.		
17. Restoration with Violation (RVW+year). A restored wetland that was in violation as a result of conversion after November 28, 1990, or the planting of an agricultural commodity or forage crop.		
18. Restoration without Violation (RSW). A restored wetland converted between December 23, 1985 and November 28, 1990, on which an agricultural commodity has not been planted.		
19. Replacement Wetlands (RPW). Wetlands which are converted for purposes other than to increase production, where the wetland values are being replaced at a second site.		
20. Good Faith Wetlands (GFW+year). Wetlands on which ASCS has determined a violation to be in good faith and the wetland has been restored.		
21. Converted Wetlands (CW). Wetlands converted after December 23, 1985 and prior to November 28, 1990. In any year that an agricultural commodity is planted on these Converted Wetlands, you will be ineligible for USDA benefits.		
22. Converted Wetland (CW+year). Wetlands converted after November 28, 1990. You will be ineligible for USDA program benefits until this wetland is restored.		
23. Converted Wetland Non-Agricultural use (CWNA). Wetlands that are converted for trees, fish production, shrubs, cranberries, vineyards or building and road construction.		
24. Converted Wetland Technical Error (CWTE). Wetlands that were converted as a result of incorrect determination by SCS.		
25. The planned alteration measures on wetlands in fields _____ are considered maintenance and are in compliance with FSA.		
26. The planned alteration measures on wetlands in fields _____ are not considered to be maintenance and if installed will cause the area to become a Converted Wetland (CW). See item 22 for information on CW+year.		
27. The wetland determination was completed in the office <input checked="" type="checkbox"/> field <input type="checkbox"/> and was delivered <input type="checkbox"/> mailed <input checked="" type="checkbox"/> to the person on 10-4-93		
28. Remarks. TILE - OK. No HIGHLY ERODIBLE FIELD OR WETLAND.		

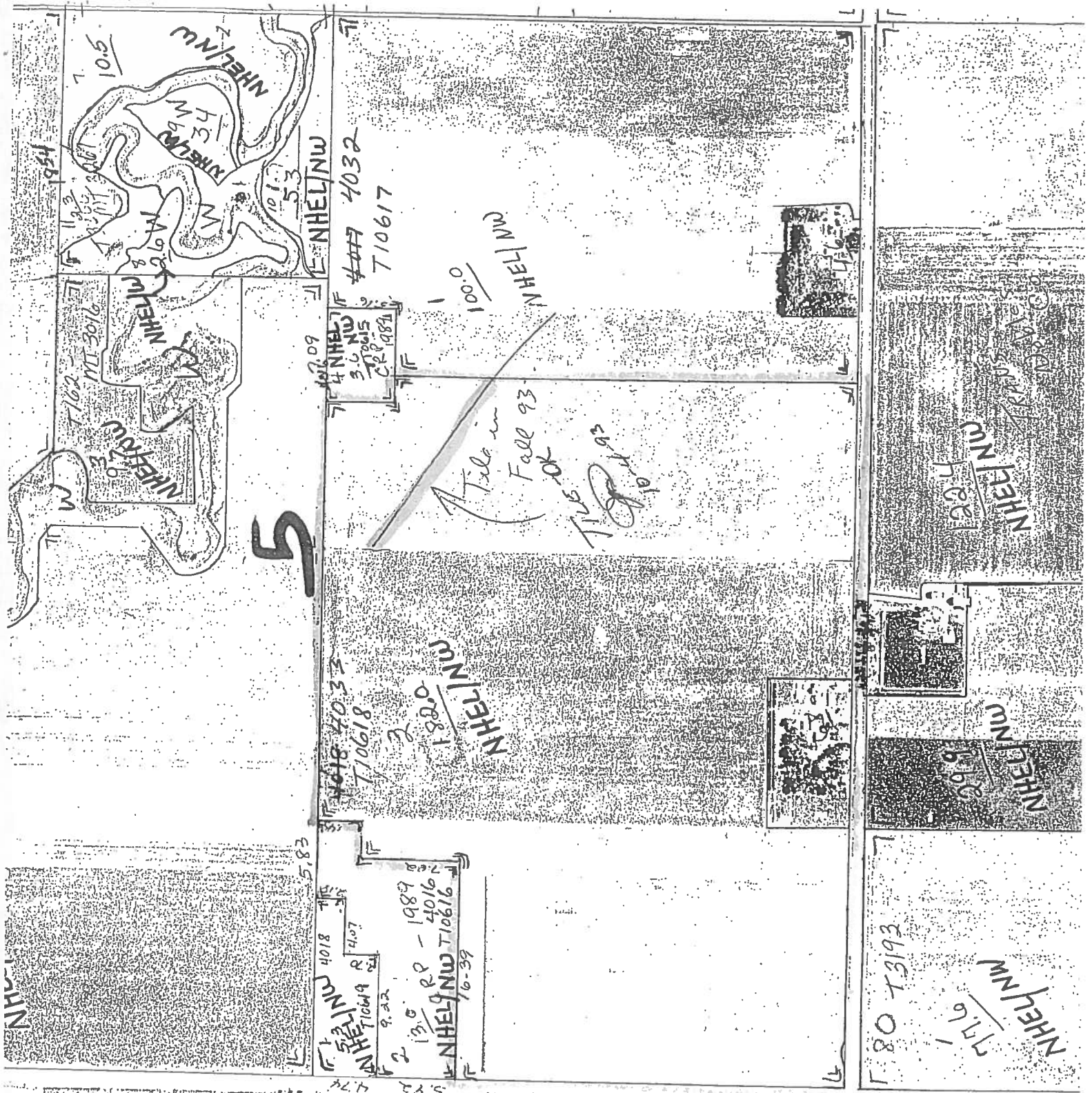
ARBA-5

29. I certify that the above determination is correct and adequate for use in determining eligibility for USDA program benefits, and that wetland hydrology, hydric soils, and hydrophytic vegetation under normal circumstances exist on all areas outlined as Wetlands, Farmed Wetlands, and Farmed Wetlands Pasture.

30. Signature of SCS District Conservationist


31. Date
10-4-93

Assistance and programs of the Soil Conservation Service available without regard to race, religion, color, sex, age, or handicap.



5

Tile in Fall 93
TILE 5-0-93

NHEN/NW
T10617

NHEN/NW
T10618

NHEN/NW
T10616

T10619

NHEN/NW
T10617

NHEN/NW
T10618

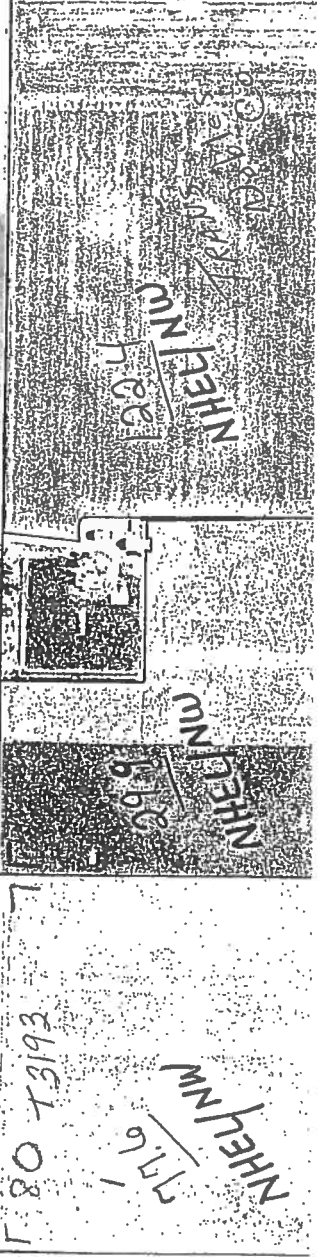
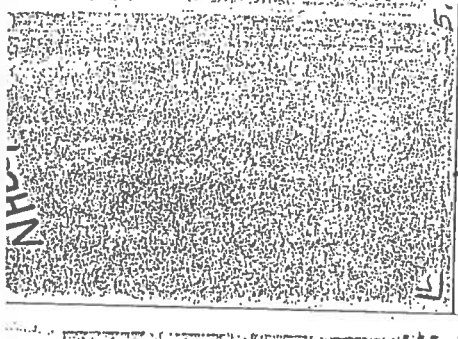
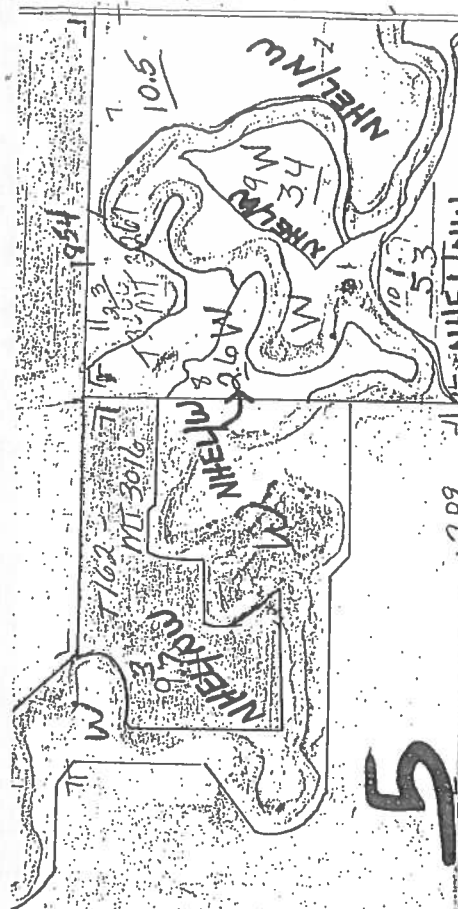
NHEN/NW
T10616

13.0 R.R. - 1989
4016
NHEN/NW T10616
16-39

188.0
NHEN/NW

NHEN/NW
T10617

NHEN/NW
T10617





HIGHLY ERODIBLE LAND AND WETLAND CONSERVATION DETERMINATION

Name	Eugene Meyer	Request Date:	10/1/2012	County:	Jackson
Address	73537 365th Ave Round Lake MN 56167				
Agency or Person Requesting Determination:	Landowner	Tract No:	12891	Farm No:	7357

Section I - Highly Erodible Land

Is a soil survey now available for making a highly erodible land determination?	
Are there highly erodible soil map units on this farm?	

Fields in this section have undergone a determination of whether they are highly erodible land (HEL) or not; fields for which an HEL Determination has not been completed are not listed. In order to be eligible for USDA benefits, a person must be using an approved conservation system on all HEL.

<u>Field(s)</u>	<u>HEL(Y/N)</u>	<u>Sodbust (Y/N)</u>	<u>Acres</u>	<u>Determination Date</u>
Refer to the Previous HEL determination available on file from your FSA office				

Section II - Wetlands

Are there hydric soils on this farm?	Yes
--------------------------------------	-----


Fields in this section have had wetland determinations completed. See the Definition of Wetland Label Codes for additional information regarding allowable activities under the wetland conservation provisions of the Food Security Act and/or when wetland determinations are necessary to determine USDA program eligibility.

<u>Field(s)</u>	<u>Wetland Label</u>	<u>Occurrence Year</u>	<u>Acres</u>	<u>Determination Date</u>	<u>Certification Date</u>
4	PC/NW		72.1	10/1/2012	10/31/2012

The wetland determination was completed in the Office It was delivered by: Mail On: 10/1/2012

Remarks:	Certified wetland determination was completed due to AD-1026 request.
----------	---

I certify that the above determinations are correct and were conducted in accordance with policies and procedures contained in the National Food Security Act Manual.

Signature Designated Conservationist	Date
 Cheryl Heard	10/1/2012

***DEFINITIONS OF WETLAND LABEL CODES**

AW	Artificial Wetland. An area that is artificial or irrigation induced wetland. These wetlands are not subject to the wetland conservation provision.
CME	An area that receives a Categorical Minimal Effect determination.
CPD	Corps Permit Decision. Corps of Engineers permit decisions regarding section 404 of the Clean Water Act will be relied upon to satisfy the wetland conservation provisions of the Food Security Act of 1985, as amended.
CW	Converted Wetlands. An area converted between December 23, 1985 and November 28, 1990. IN any year that an agricultural commodity is planted on these converted wetlands, you will ineligible for USDA benefits.
**CW+year	An area converted after November 28, 1990. You will be ineligible for USDA program benefits until this wetland is restored.
CWTE	Converted Wetland Technical Error. An area converted or commenced based on an incorrect NRCS determination or misinformation from a NRCS or FSA employee.
FW	Farmed Wetland. An area that is farmed wetland; was manipulated and planted before December 23, 1985, but still meets wetland criteria. These may be farmed and maintained in the same manner as long as they are not abandoned.
FWP	Farmed Wetlands Pasture. An area that is pasture or hayland, manipulated before December 23, 1985 but still meets wetland criteria. These may be farmed and maintained in the same manner as long as they are not abandoned.
MIW	Mitigation Wetlands. Wetlands on which a person is actively mitigating a frequently cropped area or a wetland converted between December 23, 1985 and November 28, 1990. A converted wetland, farmed wetland, or farmed wetland pasture on which functions and values were lost are compensated for through wetland restoration, enhancement or creation.
MW	Minimal effect Wetland. An area determined to be minimal effect. These wetlands are to be farmed according to the minimal-effect agreement signed at the time the minimal-effect determination was made,
MWM	An area determined to be minimal effect with mitigation.
NW	Non-Wetland. An area that does not contain a wetland.
NW/NAD	An area determined to be a non-wetland resulting from a decision from the National Appeals Division.
PC	Prior Converted cropland, which was drained filled, or manipulated before December 23, 1985; was cropped prior to December 23, 1985; was not abandoned; and does not meet FW criteria. These are not subject to the wetland conservation provision unless the area reverts to wetland as a result of abandonment.
PC/NW	An area that contains both PC and NW.
TP	Third Party Exemption.
W	Wetlands. An area meeting wetland criteria, including wetland farmed under natural conditions. If you plan to clear, drain, fill, level or manipulate these areas, contact NRCS and the Army Corp of Engineers prior to any such activity.
WX	A wetland area that has been manipulated after December 23, 1985, but was not, for the purpose of making production possible and production was not made possible. These include wetlands manipulated by drainage maintenance agreements.

Customer: Eugene Meyer
 Tract: 12891
 Date: 10/1/2012

Certified Wetland Determination

Agency: NRCS
 Field Office: Lakefield
 District: Jackson SWCD



Missing Label	CME	MWM
PC/NW	CPD	NW
W	CW	NW/NAD
FW	CWTE	PC
FWP	MIW	TP
AW	MW	WX
	Townships	
	Sections	



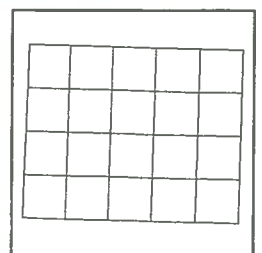
1:4,316

330

660

1,320

Feet



Maps are for graphical purposes only. They do not represent a legal survey. While every effort has been made to ensure that these data are accurate and reliable within the limits of the current state of the art, NRCS cannot assume liability for any damages caused by any errors or omissions in the data, nor as a result of the failure of the data to function on a particular system. NRCS makes no warranty, expressed or implied, nor does the fact of distribution constitute such a warranty.

