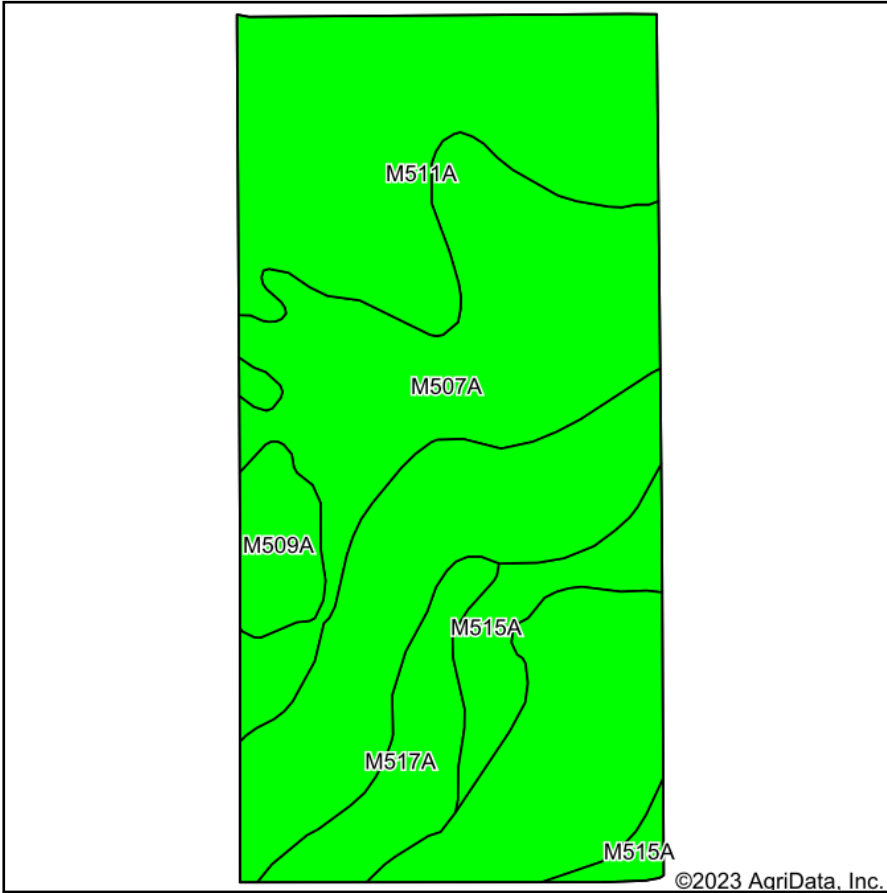
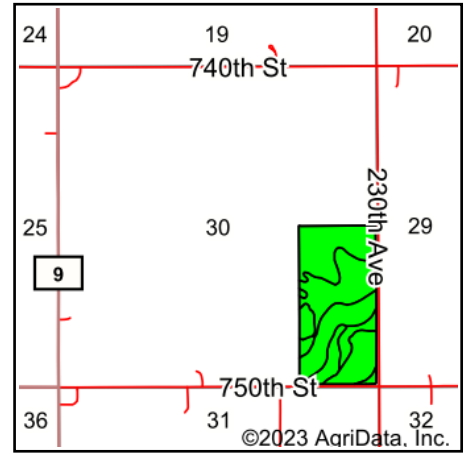


# Soils Map



Soils data provided by USDA and NRCS.



State: **Minnesota**  
 County: **Dodge**  
 Location: **30-105N-16W**  
 Township: **Vernon**  
 Acres: **76.34**  
 Date: **4/6/2023**



Maps Provided By:



© AgriData, Inc. 2023

www.AgriDataInc.com



Area Symbol: MN039, Soil Area Version: 19

Code	Soil Description	Acres	Percent of field	PI Legend	Non-Irr Class *c	Productivity Index	*n NCCPI Overall	*n NCCPI Corn	*n NCCPI Small Grains	*n NCCPI Soybeans	
M511A	Readlyn silt loam, 1 to 3 percent slopes	34.02	44.6%		lw	100	79	79	54	65	
M507A	Marquis silt loam, 1 to 3 percent slopes	29.64	38.8%		lle	100	89	89	69	77	
M517A	Clyde silty clay loam, 0 to 3 percent slopes	5.08	6.7%		llw	86	90	90	74	85	
M515A	Tripoli clay loam, 0 to 2 percent slopes	4.77	6.2%		llw	87	67	67	44	62	
M509A	Mantorville loam, 0 to 2 percent slopes	2.83	3.7%		lls	79	67	67	54	48	
<b>Weighted Average</b>						<b>1.55</b>	<b>97.5</b>	<b>*n 82.4</b>	<b>*n 82.4</b>	<b>*n 60.5</b>	<b>*n 70.2</b>

\*n: The aggregation method is "Weighted Average using all components"

\*c: Using Capabilities Class Dominant Condition Aggregation Method

Soils data provided by USDA and NRCS.