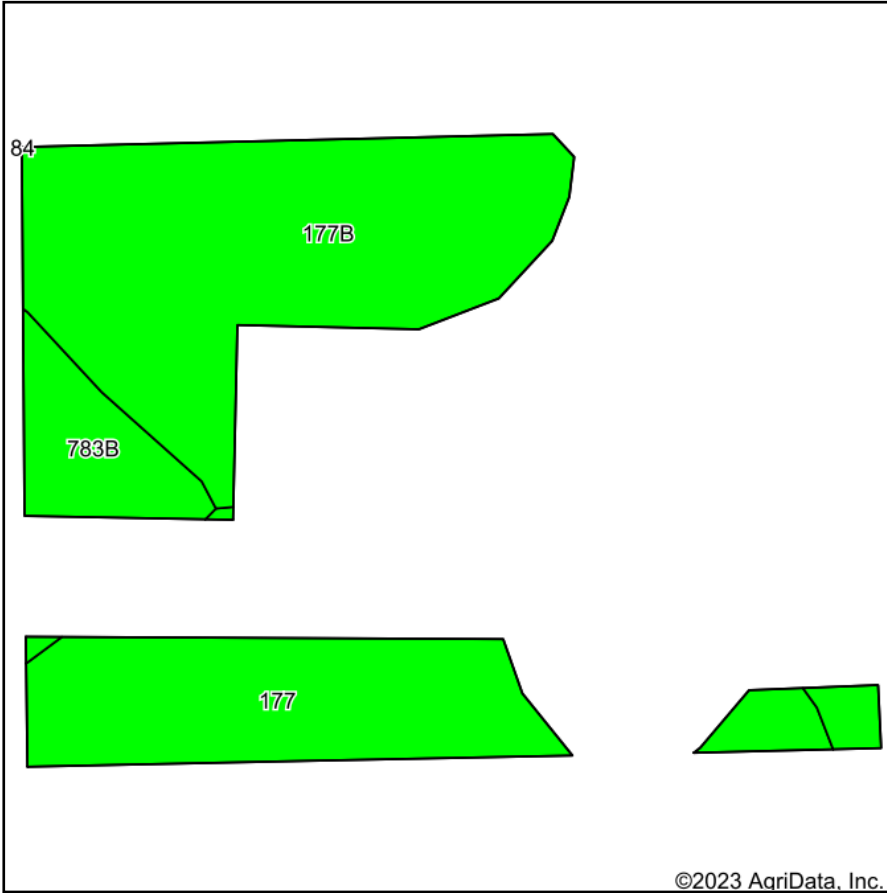
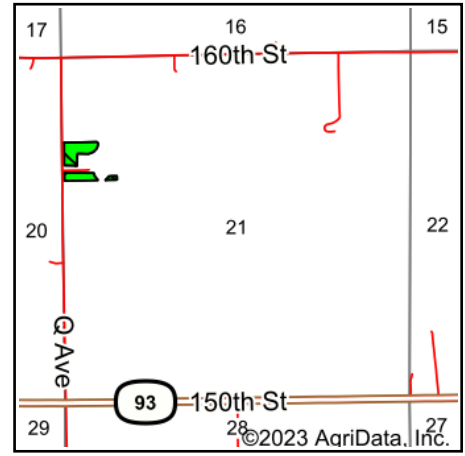


# Soils Map



Soils data provided by USDA and NRCS.



State: **Iowa**  
 County: **Fayette**  
 Location: **21-93N-9W**  
 Township: **Center**  
 Acres: **4.25**  
 Date: **3/16/2023**



Maps Provided By:



© AgriData, Inc. 2023

www.AgriDataInc.com



Area Symbol: IA065, Soil Area Version: 27

Code	Soil Description	Acres	Percent of field	CSR2 Legend	Non-Irr Class *c	CSR2**	CSR	*n NCCPI Overall	*n NCCPI Corn	*n NCCPI Small Grains	*n NCCPI Soybeans	
177B	Saude loam, 2 to 5 percent slopes	2.41	56.7%		Ils	55	59	76	76	63	59	
177	Saude loam, 0 to 2 percent slopes	1.39	32.7%		Ils	60	64	78	78	65	61	
783B	Cresco loam, 2 to 5 percent slopes	0.45	10.6%		Ile	73	65	76	76	49	63	
<b>Weighted Average</b>						<b>2.00</b>	<b>58.5</b>	<b>61.3</b>	<b>*n 76.7</b>	<b>*n 76.7</b>	<b>*n 62.2</b>	<b>*n 60.1</b>

\*\*IA has updated the CSR values for each county to CSR2.

\*n: The aggregation method is "Weighted Average using all components"

\*c: Using Capabilities Class Dominant Condition Aggregation Method

Soils data provided by USDA and NRCS.