

LAND

FOR SALE

Adair County, MO

135
+/- ACRES

Broker- Jacob Hart: Lic# MN-40438432 IA-B635461000 WI- 58203-90 MO-2022039556 CO-ER100093474 Phone# 507-259-1065

SCAN FOR MORE INFO



Real Estate License:
2020033844

109 E Main St
Perry, MO 63462

LUKE MITCHELL
573-541-1232

Luke@HighPointLandCompany.com



HIGH POINT
LAND COMPANY

www.HIGHPOINTLANDCOMPANY.COM





Summary of Property

135+/- Acres • Adair County, MO

Listing Price: \$429,880

DESCRIPTION

This 135.9+/- acre tract consists of great road frontage, good fencing, pasture ground and a pond for a water source that would make a great opportunity for a cattle farmer to expand and grow their herd. If you're looking at this property from a hunting standpoint definitely don't overlook the opportunity it has! The foundation of this farm is set, and you can customize it to your liking with native grasses, food plots, box blinds, TSI, entry and exit routes, etc..

Property Address:

TBD Loeffler Store Trail, Kirksville, MO 63501

Property Features:

- Excellent hunting
- Views for miles
- Small pond
- Buildable
- Great access

75,000
ACRES SOLD

Property Photos



75,000
ACRES SOLD

Property Photos



75,000
ACRES SOLD

Property Photos



75,000
ACRES SOLD

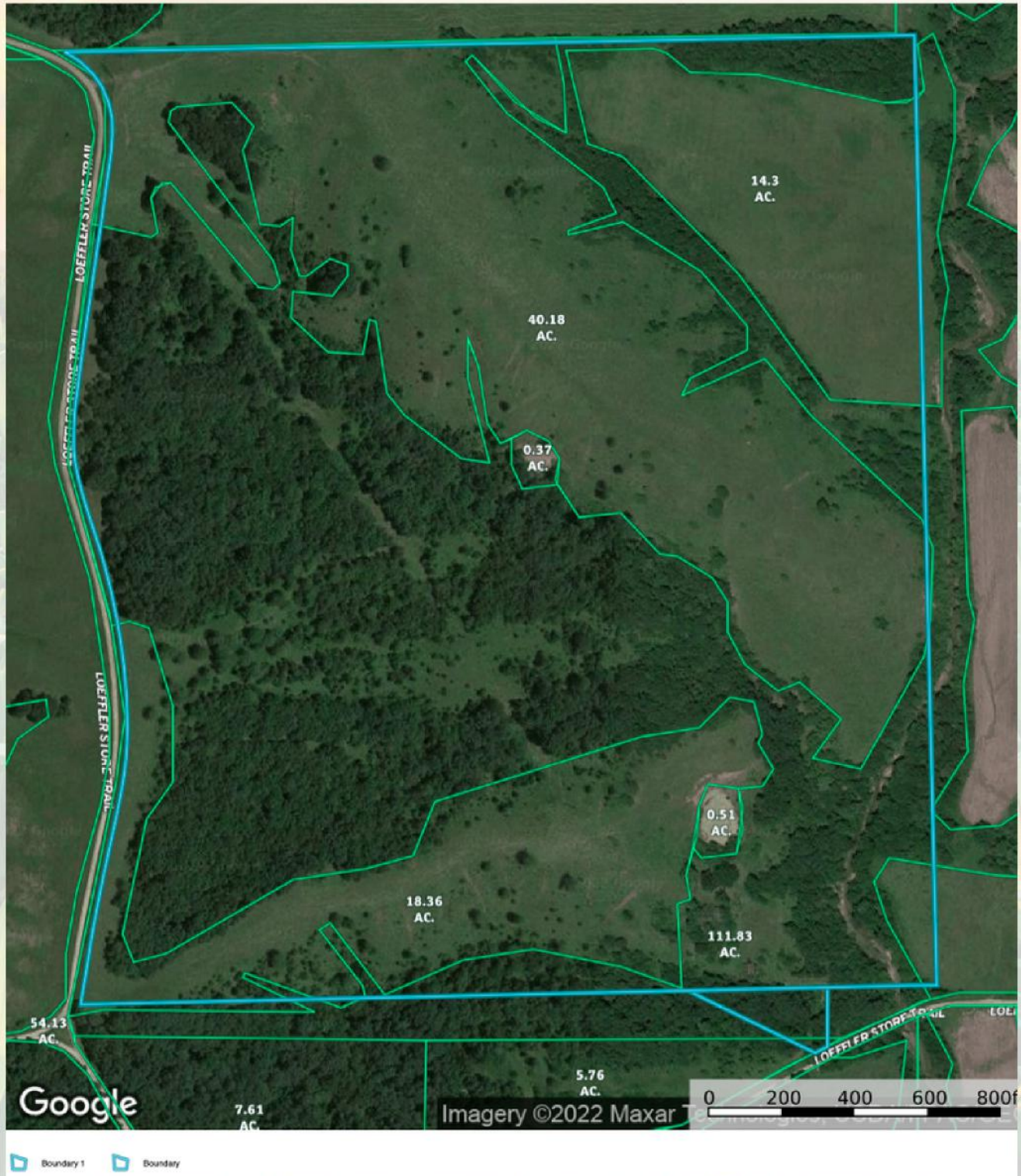
Aerial Map



Boundary 1 Boundary

75,000
ACRES SOLD

Aerial Map



135
+/- ACRES

ADAIR COUNTY, MO

Broker- Jacob Hart: Lic# MN-40438432 IA-B635461000 WI- 58203-90 MO-2022039556 CO-ER100093474 Phone# 507-259-1065

SCAN FOR MORE INFO



Real Estate License:
2020033844

109 E Main St
Perry, MO 63462

LUKE MITCHELL
573-541-1232

Luke@HighPointLandCompany.com



HIGH POINT
LAND COMPANY

www.HIGHPOINTLANDCOMPANY.COM

