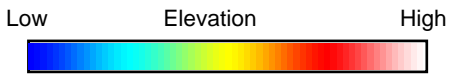
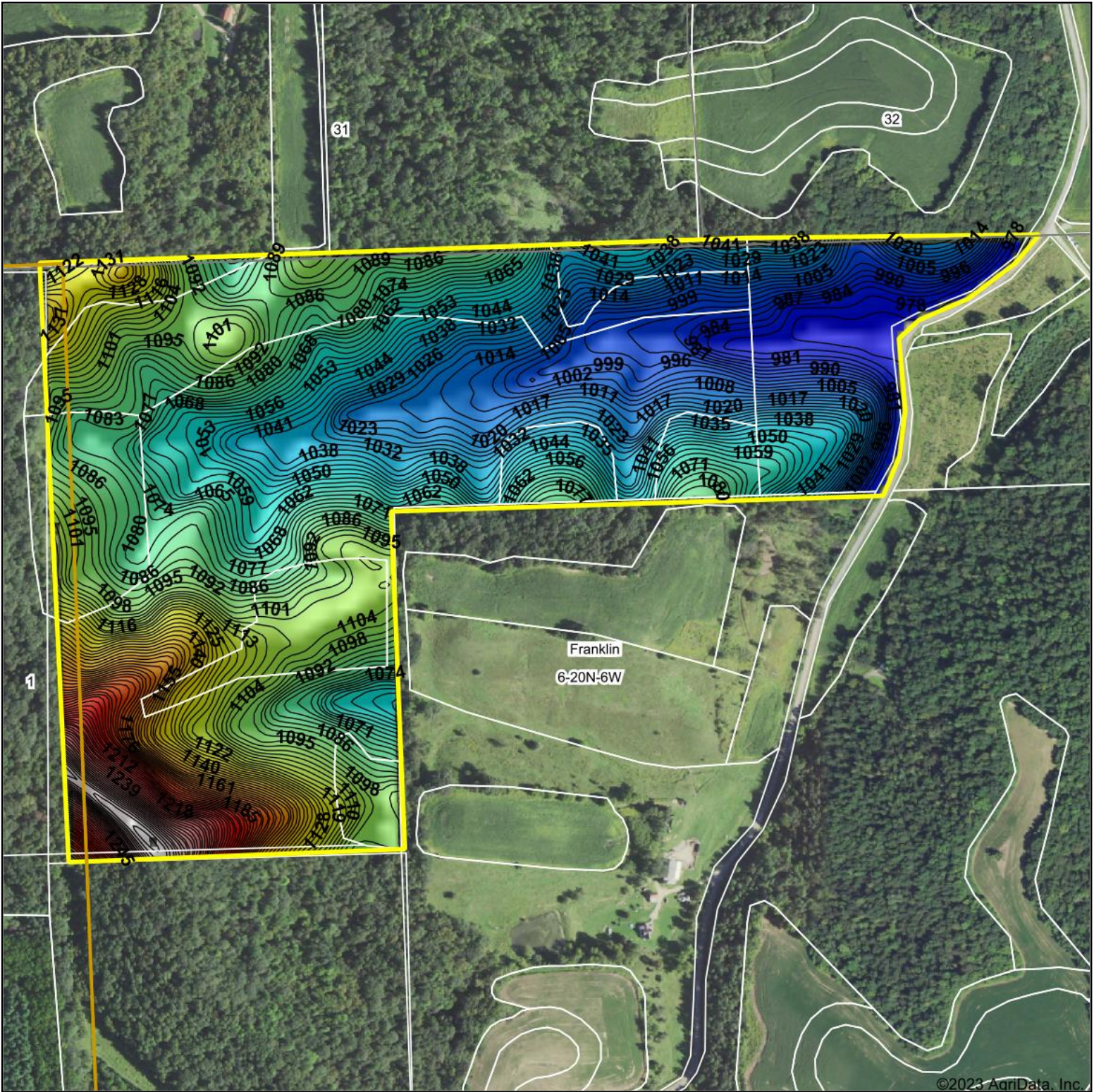


Topography Hillshade



Source: USGS 10 meter dem

Interval(ft): 3

Min: 972.7

Max: 1,288.5

Range: 315.8

Average: 1,072.8

Standard Deviation: 60.63 ft



2/14/2023

6-20N-6W
Jackson County
Wisconsin

map center: 44° 14' 41.07, -91° 8' 49.72



Maps Provided By:



© AgriData, Inc. 2021 www.AgriDataInc.com

Field borders provided by Farm Service Agency as of 5/21/2008.