

# LAND

# FOR SALE

Mower County, MN

**1.13**  
+/- ACRES



Broker- Jacob Hart: Lic# MN-40438432 IA-B635461000 WI- 58203-90 MO-2022039556 CO-ER100093474 Phone# 507-259-1065

SCAN FOR MORE INFO



Real Estate License:  
40667435

520 S Main St,  
Stewartville, MN 55976

**TROY STAFFORD**  
**507-259-3047**

Troy@HighPointLandCompany.com



**HIGH POINT**  
**LAND COMPANY**  
HIGHPOINTLANDCOMPANY.COM





# Summary of Property

## 1.13 +/- Acres • Mower County, MN

**Listing Price: \$54,900**

### **DESCRIPTION**

Don't miss your chance to own this beautiful property on the edge of Elkton city limits. It offers great access off both paved and gravel road and abundance of trees with a scenic view. The possibilities are endless with residential, commercial or agricultural opportunities abundant.

Please contact Troy Stafford at [Troy@Highpointlandcompany.com](mailto:Troy@Highpointlandcompany.com) or 507-259-3047 for more information on this opportunity.

**Address:** TBD 670th Ave, Elkton, MN 55933

**Directions:** Located on the South edge of Elkton on the east side 670th Ave.

75,000  
ACRES SOLD

# Property Photos



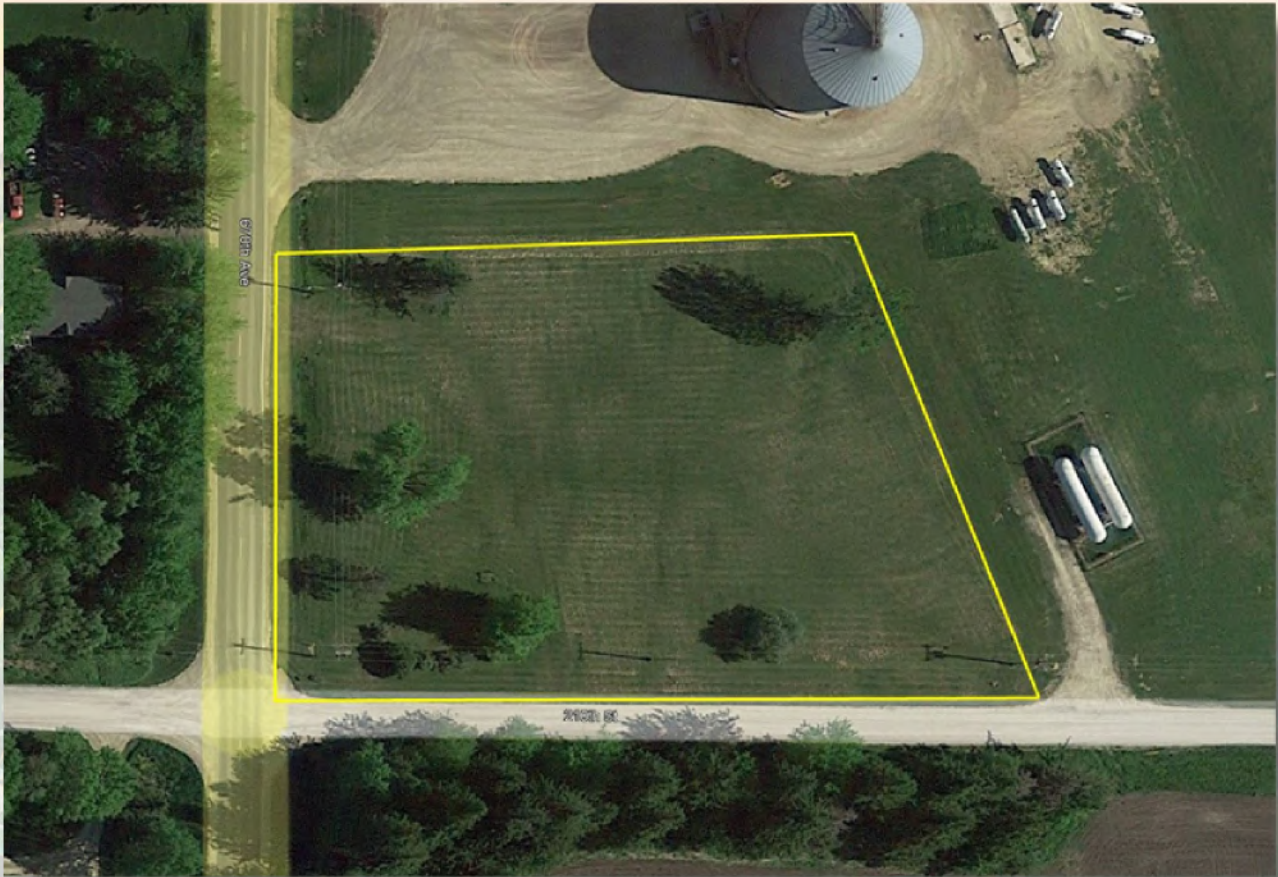
75,000  
ACRES SOLD

# Property Photos



75,000  
ACRES SOLD

# Earth Aerial



75,000  
ACRES SOLD

# Earth Aerial



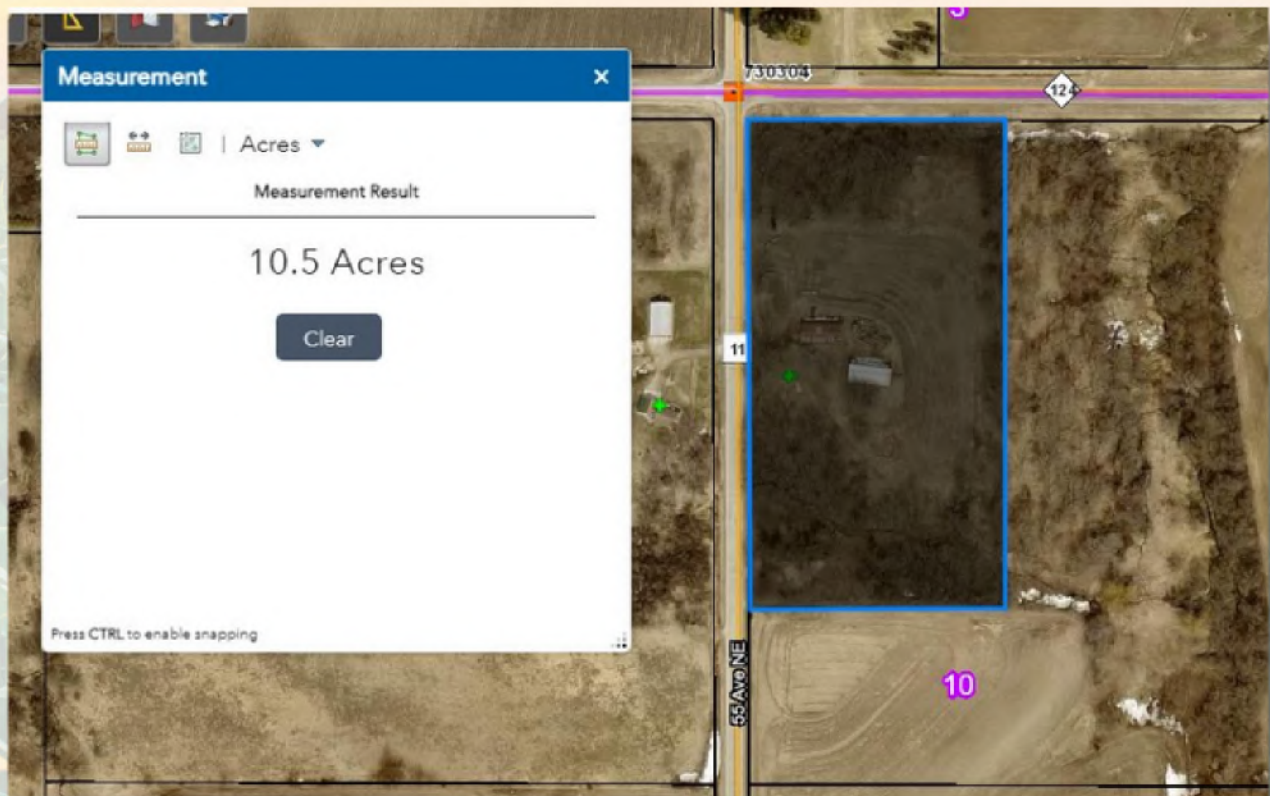
75,000  
ACRES SOLD

# Earth Aerial





# Aerial Map







**1.13**  
+/- ACRES

**MOWER COUNTY, MN**

Broker- Jacob Hart: Lic# MN-40438432 IA-B635461000 WI- 58203-90 MO-2022039556 CO-ER100093474 Phone# 507-259-1065

SCAN FOR MORE INFO



**TROY STAFFORD**  
**507-259-3047**

Troy@HighPointLandCompany.com



**HIGH POINT**  
**LAND COMPANY**  
HIGHPOINTLANDCOMPANY.COM

Real Estate License:  
40667435

520 S Main St,  
Stewartville, MN 55976

