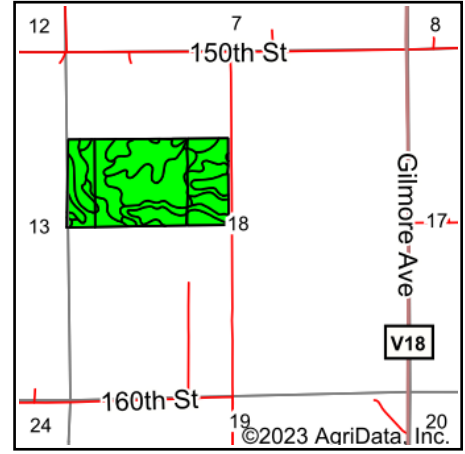
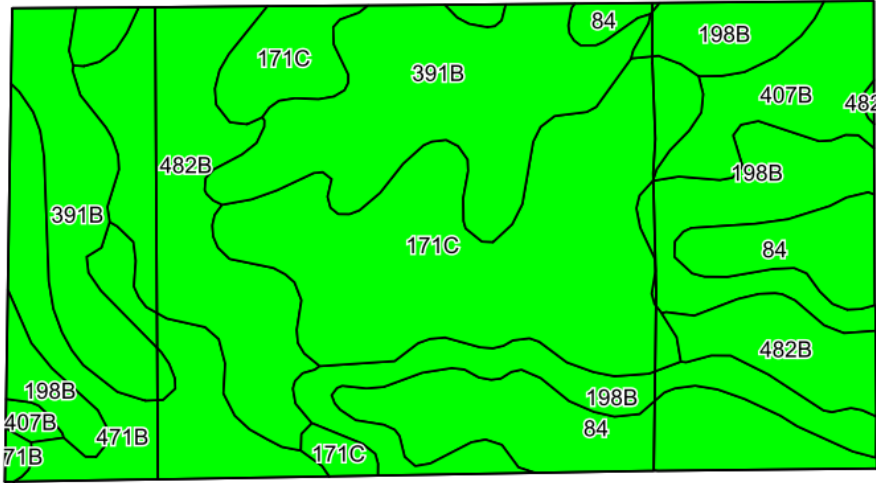


# Soils Map



State: **Iowa**  
 County: **Chickasaw**  
 Location: **18-96N-13W**  
 Township: **Washington**  
 Acres: **73.61**  
 Date: **2/9/2023**



Maps Provided By:



©2023 AgriData, Inc.

Soils data provided by USDA and NRCS.

Area Symbol: IA037, Soil Area Version: 28

| Code                    | Soil Description                           | Acres | Percent of field | CSR2 Legend | Non-Irr Class *c | CSR2**      | CSR         | Corn Bu     | Soybeans Bu | *n NCCPI Overall | *n NCCPI Corn  | *n NCCPI Small Grains | *n NCCPI Soybeans |                |
|-------------------------|--|-------|------------------|-------------|------------------|-------------|-------------|-------------|-------------|------------------|----------------|-----------------------|-------------------|----------------|
| 171C                    | Bassett loam, 5 to 9 percent slopes        | 17.75 | 24.1%            |             | Ille             | 80          | 64          |             |             | 84               | 84             | 67                    | 72                |                |
| 391B                    | Clyde-Floyd complex, 1 to 4 percent slopes | 13.86 | 18.8%            |             | Ilw              | 87          | 72          |             |             | 89               | 87             | 70                    | 86                |                |
| 198B                    | Floyd loam, 1 to 4 percent slopes          | 11.52 | 15.7%            |             | Ilw              | 89          | 74          |             |             | 88               | 83             | 63                    | 88                |                |
| 482B                    | Racine loam, 2 to 5 percent slopes         | 11.33 | 15.4%            |             | Ile              | 76          | 79          |             |             | 65               | 65             | 46                    | 55                |                |
| 84                      | Clyde clay loam, 0 to 3 percent slopes     | 8.87  | 12.0%            |             | Ilw              | 88          | 74          |             |             | 90               | 90             | 75                    | 85                |                |
| 471B                    | Oran loam, 2 to 5 percent slopes           | 6.34  | 8.6%             |             | Iw               | 74          | 79          |             |             | 77               | 77             | 52                    | 57                |                |
| 407B                    | Schley loam, 1 to 4 percent slopes         | 3.74  | 5.1%             |             | Ilw              | 81          | 69          |             |             | 94               | 94             | 79                    | 85                |                |
| 171B                    | Bassett loam, 2 to 5 percent slopes        | 0.20  | 0.3%             |             | Ile              | 85          | 79          | 215         | 62          | 85               | 85             | 68                    | 73                |                |
| <b>Weighted Average</b> |  |       |                  |             |                  | <b>2.16</b> | <b>82.6</b> | <b>72.2</b> | <b>0.6</b>  | <b>0.2</b>       | <b>*n 83.3</b> | <b>*n 82.1</b>        | <b>*n 64</b>      | <b>*n 75.5</b> |

\*\*IA has updated the CSR values for each county to CSR2.

\*n: The aggregation method is "Weighted Average using all components"

\*c: Using Capabilities Class Dominant Condition Aggregation Method

Soils data provided by USDA and NRCS.