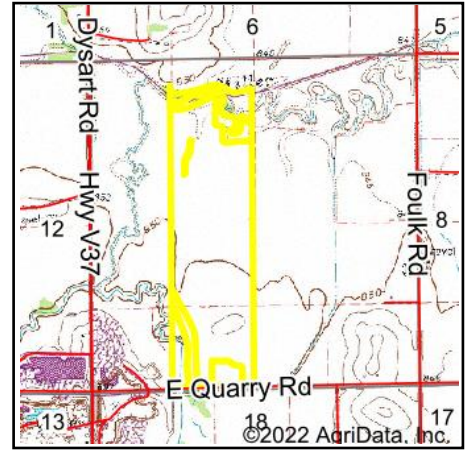
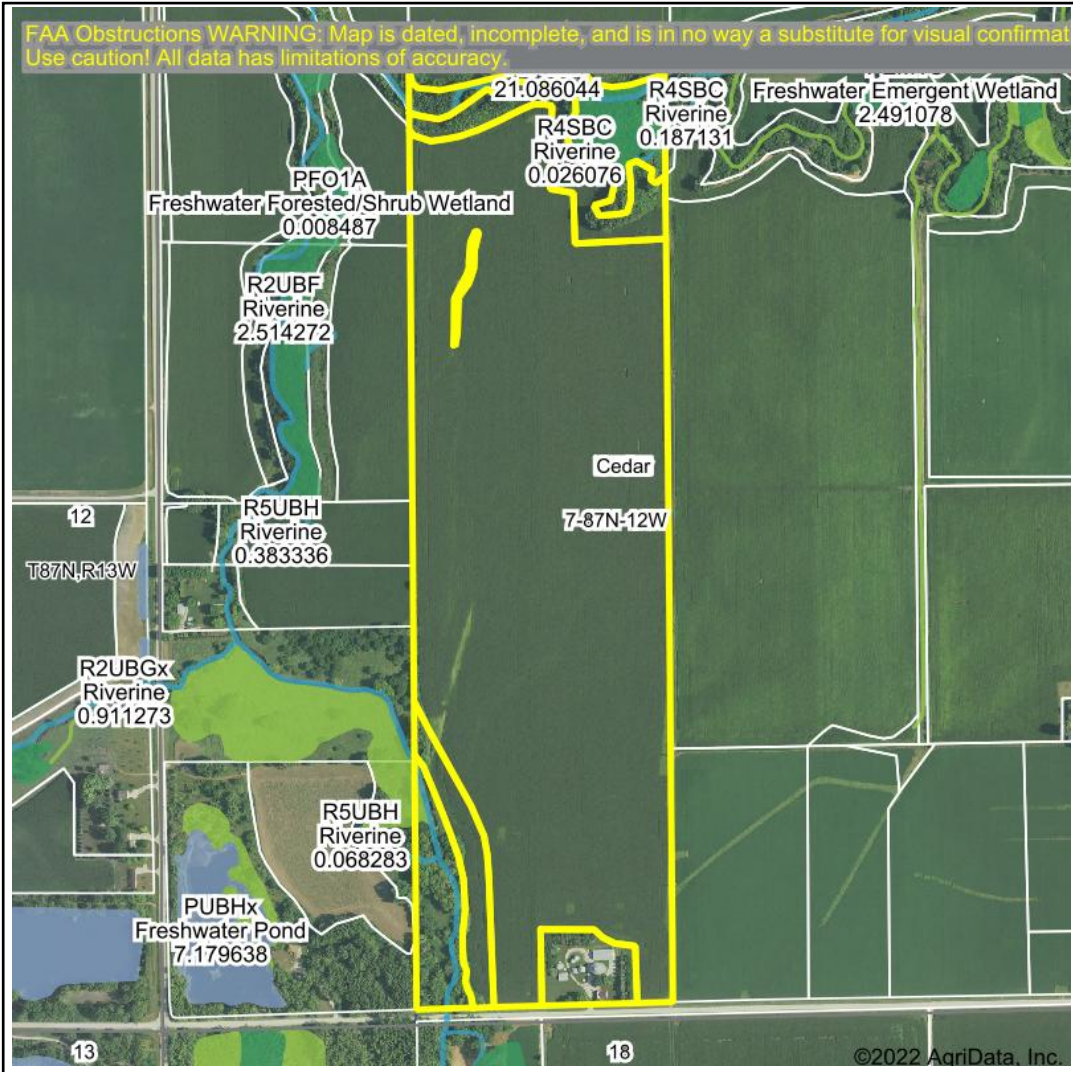


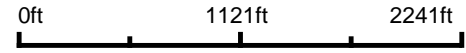
Wetlands Map



State: Iowa
Location: 7-87N-12W
County: Black Hawk
Township: Cedar
Date: 6/24/2022


HIGH POINT
 LAND COMPANY
 Maps Provided By:

surety
 CUSTOMIZED ONLINE MAPPING
© AgriData, Inc. 2021 www.AgriDataInc.com



Classification Code	Type	Acres
PFO1A	Freshwater Forested/Shrub Wetland	3.56
R2UBG	Riverine	0.91
R2UBFx	Riverine	0.81
PEM1C	Freshwater Emergent Wetland	0.21
R4SBC	Riverine	0.09
R5UBH	Riverine	0.07
Total Acres		5.65

Data Source: National Wetlands Inventory website. U.S. DoI, Fish and Wildlife Service, Washington, D.C. <http://www.fws.gov/wetlands/>

Field borders provided by Farm Service Agency as of 5/21/2008.