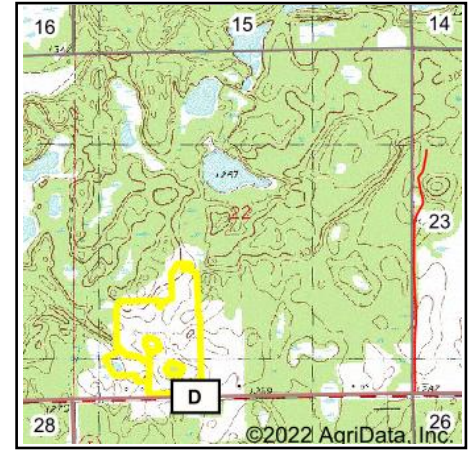
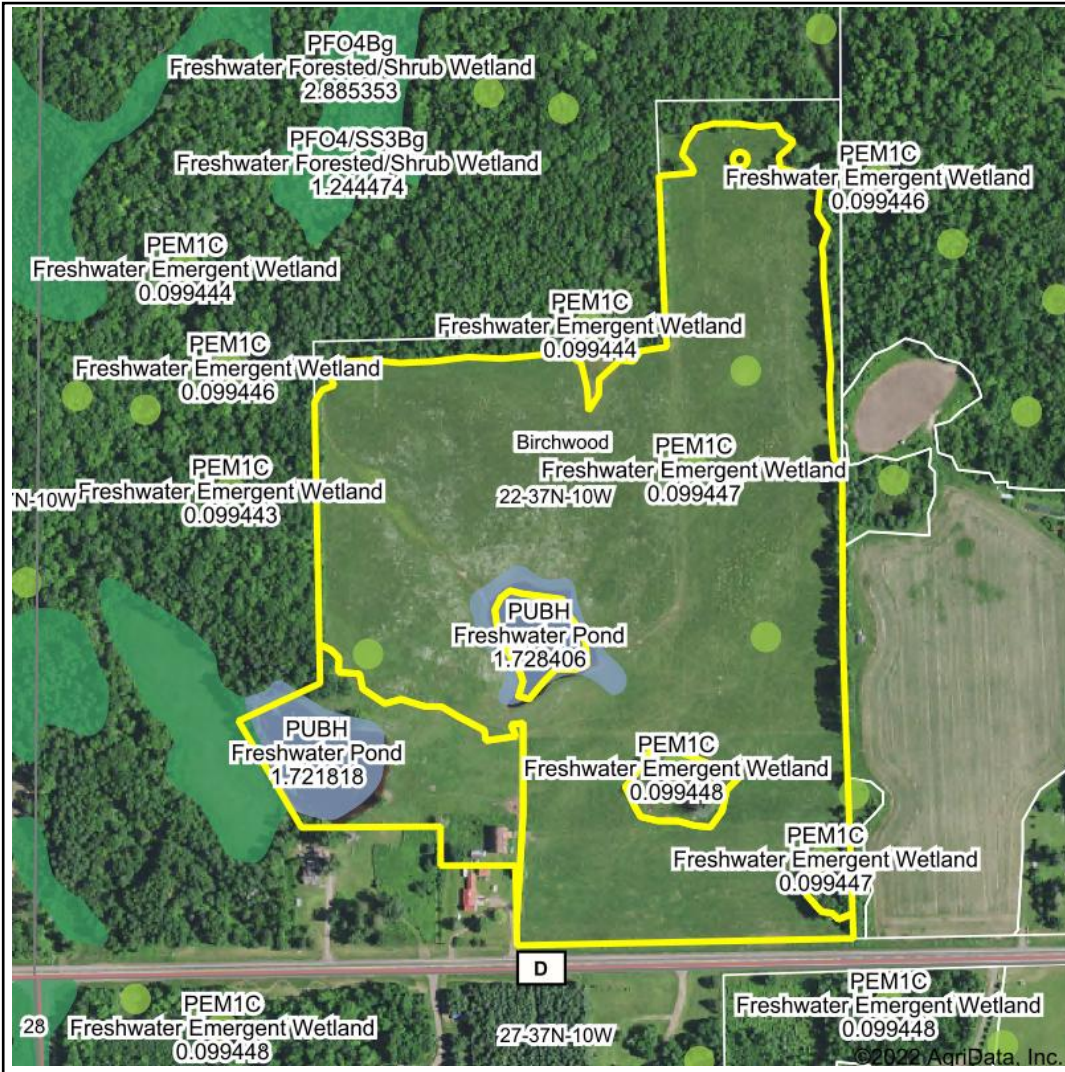


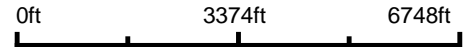
Wetlands Map



State: Wisconsin
Location: 22-37N-10W
County: Washburn
Township: Birchwood
Date: 10/4/2022


HIGH POINT
 LAND COMPANY
 Maps Provided By:

surety
 CUSTOMIZED ONLINE MAPPING
© AgriData, Inc. 2021 www.AgriDataInc.com



Classification Code	Type	Acres
PUBH	Freshwater Pond	3.32
PEM1C	Freshwater Emergent Wetland	0.62
PSS3/EM1Bg	Freshwater Forested/Shrub Wetland	0.07
Total Acres		4.01

Data Source: National Wetlands Inventory website. U.S. DoI, Fish and Wildlife Service, Washington, D.C. <http://www.fws.gov/wetlands/>