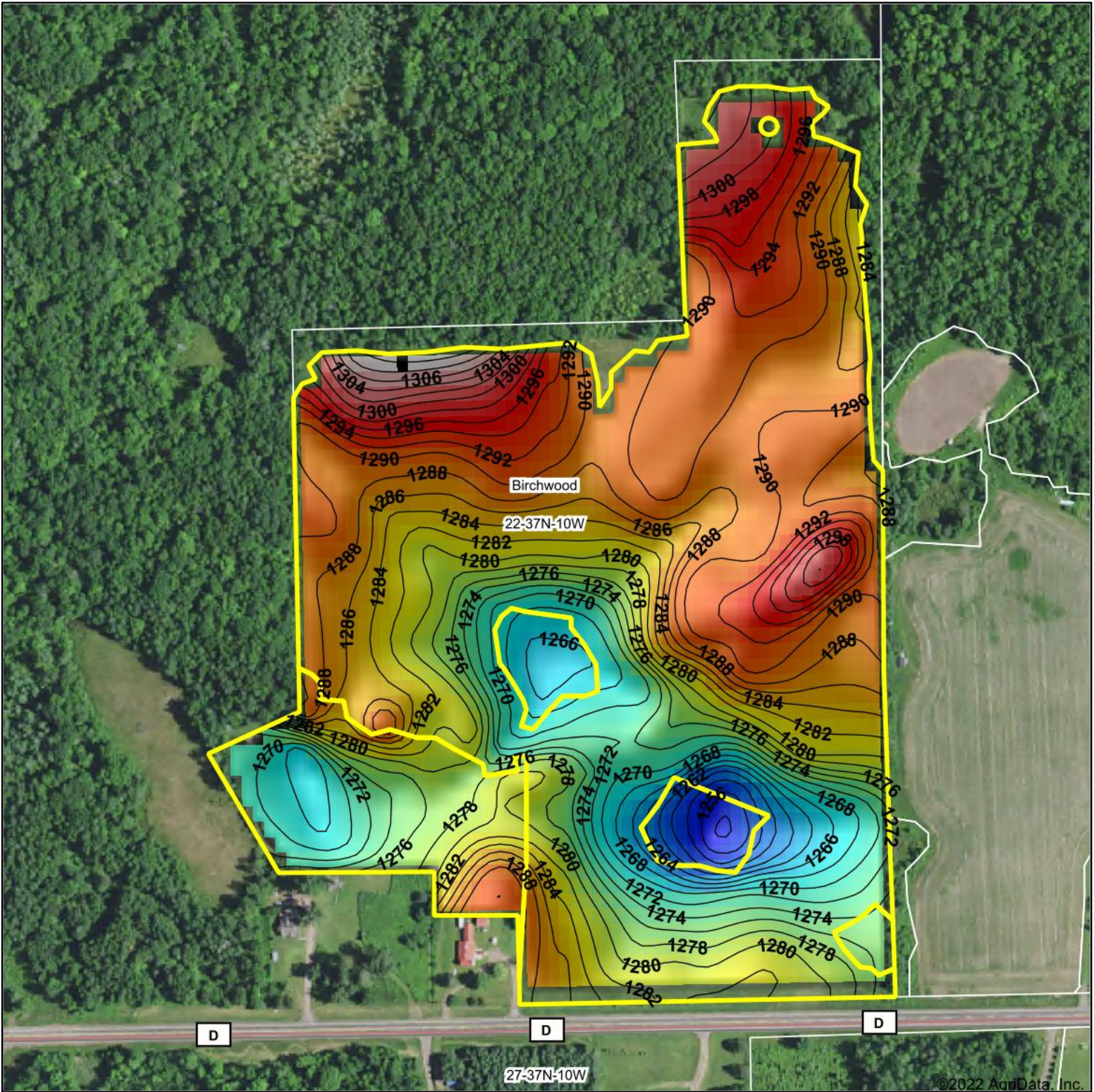


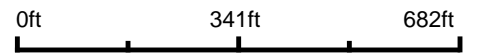
Topography Hillshade



©2022 AgriData, Inc.



Source: USGS 10 meter dem



Interval(ft): 2

Min: 1,253.4

Max: 1,310.2

Range: 56.8

Average: 1,282.6

Standard Deviation: 10.43 ft



10/4/2022

22-37N-10W
Washburn County
Wisconsin

map center: 45° 40' 9.18, -91° 35' 50.26



Maps Provided By:



© AgriData, Inc. 2021 www.AgriDataInc.com

Field borders provided by Farm Service Agency as of 5/21/2008.