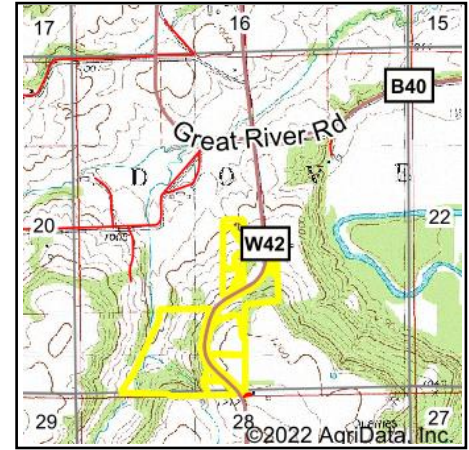
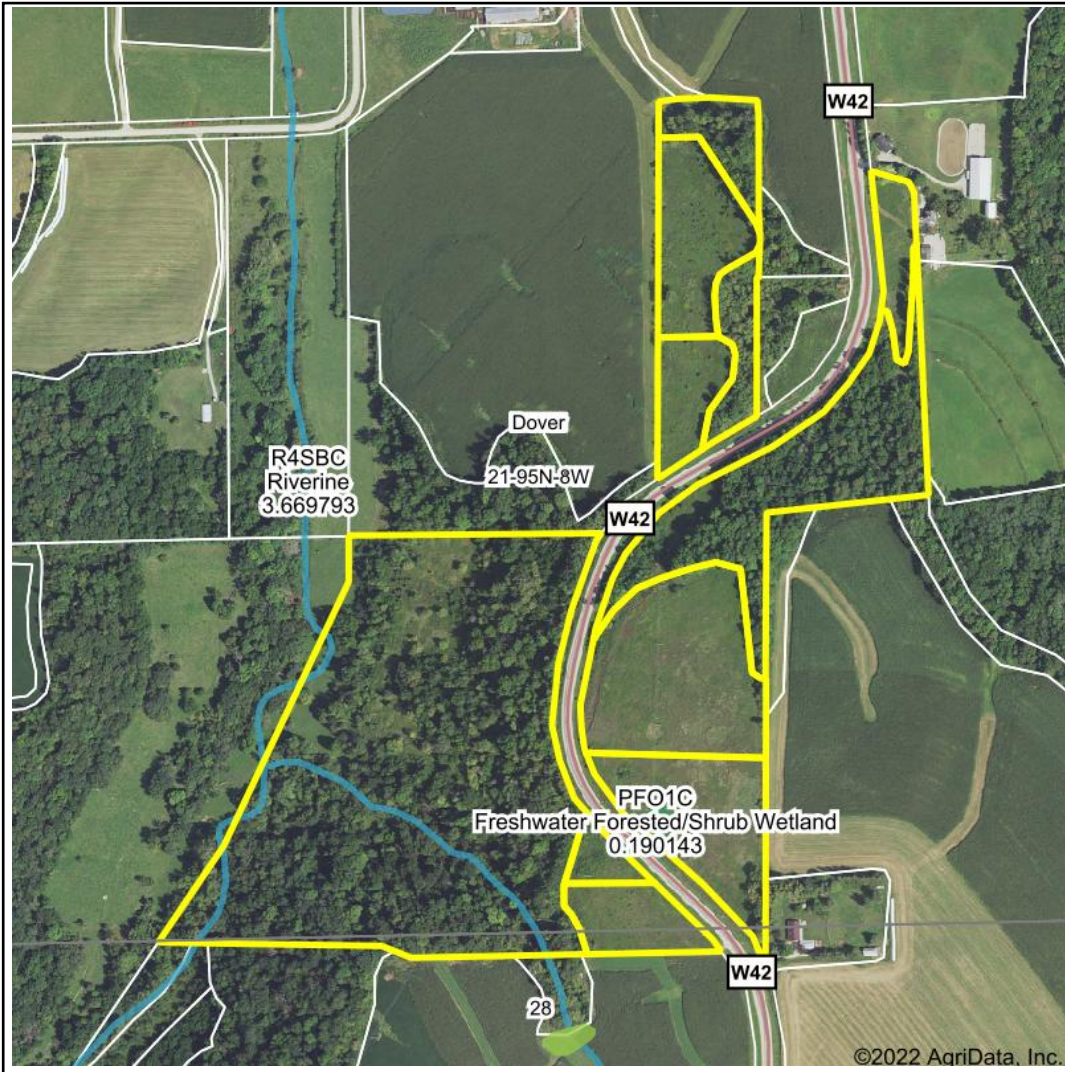


Wetlands Map



State: Iowa
Location: 21-95N-8W
County: Fayette
Township: Dover
Date: 8/22/2022



Maps Provided By:



© AgriData, Inc. 2021 www.AgriDataInc.com



0ft 707ft 1414ft

Classification Code	Type	Acres
R4SBC	Riverine	0.87
PFO1C	Freshwater Forested/Shrub Wetland	0.19
Total Acres		1.06

Data Source: National Wetlands Inventory website. U.S. Dol, Fish and Wildlife Service, Washington, D.C. <http://www.fws.gov/wetlands/>