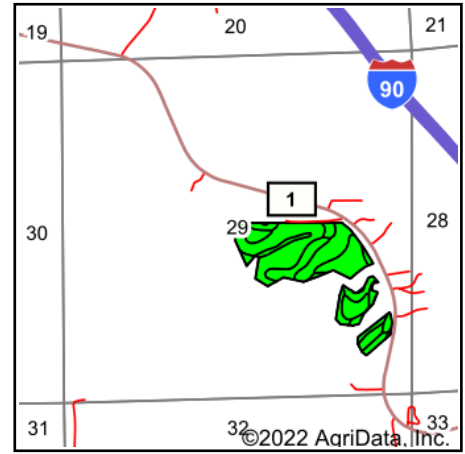
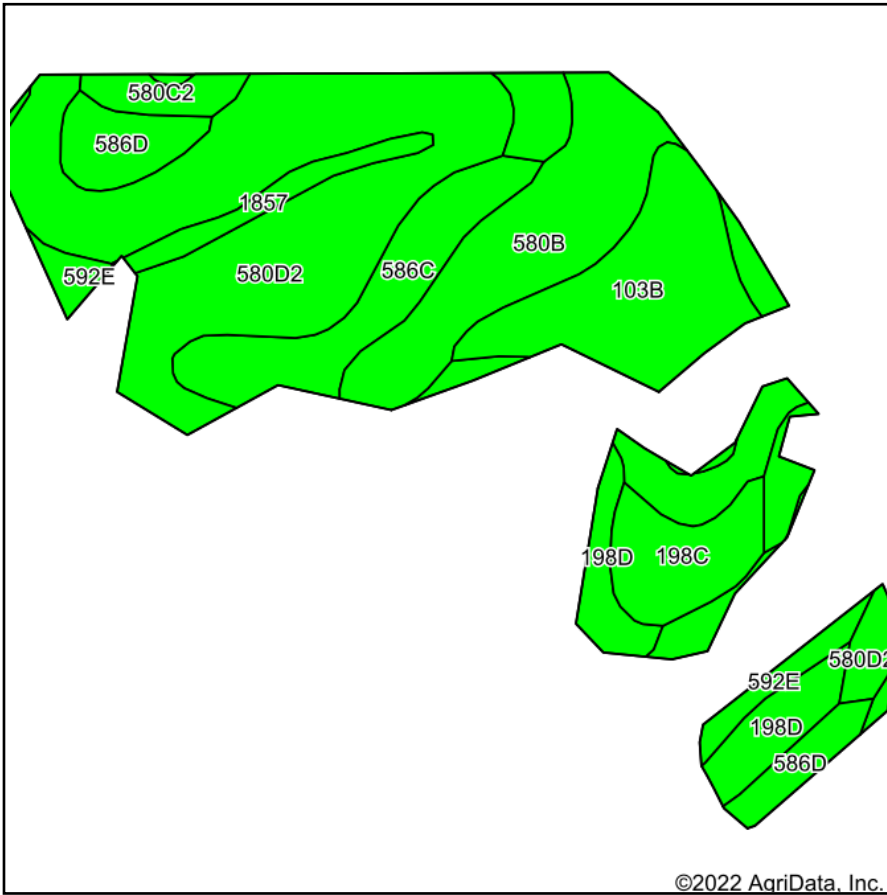


Soils Map



State: **Minnesota**
 County: **Winona**
 Location: **29-105N-4W**
 Township: **Dresbach**
 Acres: **45.33**
 Date: **8/4/2022**



Maps Provided By:



Soils data provided by USDA and NRCS.

Area Symbol: MN169, Soil Area Version: 16													
Code	Soil Description	Acres	Percent of field	PI Legend	Non-Irr Class *c	Productivity Index	Corn Bu	Soybeans Bu	*n NCCPI Overall	*n NCCPI Corn	*n NCCPI Small Grains	*n NCCPI Soybeans	*n NCCPI Cotton
580D2	Blackhammer-Southridge complex, 12 to 20 percent slopes, moderately eroded	15.10	33.3%		IVe	55			67	67	59	62	
580B	Blackhammer-Southridge complex, 2 to 6 percent slopes	6.46	14.3%		Ile	87			82	81	75	75	
586C	Nodine-Rollingstone silt loams, 4 to 12 percent slopes	5.92	13.1%		IIle	67	144	40	75	75	70	69	
103B	Seaton silt loam, driftless ridge, 2 to 6 percent slopes	5.50	12.1%		Ile	85			91	91	78	85	
198D	Rollingstone silt loam, 12 to 20 percent slopes	2.57	5.7%		IVe	54	116	32	60	60	60	57	
586D	Nodine-Rollingstone silt loams, 12 to 20 percent slopes	2.55	5.6%		IVe	52	112	31	69	69	62	61	
198C	Rollingstone silt loam, 3 to 12 percent slopes	2.49	5.5%		IIle	67	144	40	65	65	65	65	
592E	Lamoille-Elbaville silt loams, 20 to 30 percent slopes	1.84	4.1%		VIe	13			19	19	16	10	
580C2	Blackhammer-Southridge complex, 6 to 12 percent slopes, moderately eroded	1.78	3.9%		IIle	70			75	75	67	72	
1857	Eitzen silt loam, channeled	1.12	2.5%		Vw	20			64	64	34	60	6
Weighted Average					3.35	63.2	39.6	11	*n 71	*n 70.8	*n 63.5	*n 65.6	*n 0.1

*n: The aggregation method is "Weighted Average using all components"

*c: Using Capabilities Class Dominant Condition Aggregation Method

Soils data provided by USDA and NRCS.