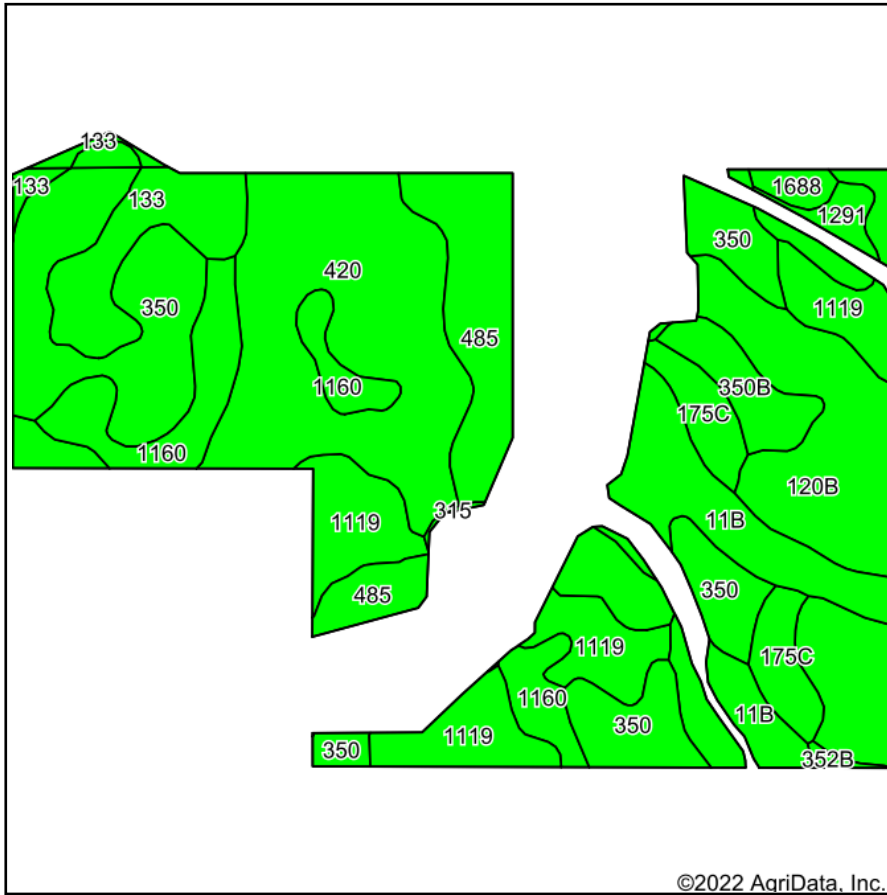
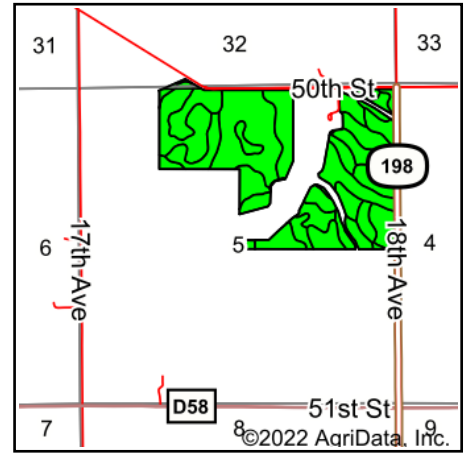


# Soils Map



Soils data provided by USDA and NRCS.



State: **Iowa**  
 County: **Benton**  
 Location: **5-86N-11W**  
 Township: **Cedar**  
 Acres: **156.23**  
 Date: **6/24/2022**



Maps Provided By:



© AgriData, Inc. 2021

www.AgriDataInc.com



Area Symbol: IA011, Soil Area Version: 24  
 Area Symbol: IA013, Soil Area Version: 29

Code	Soil Description	Acres	Percent of field	CSR2 Legend	Non-Irr Class *c	CSR2**	CSR
350	Waukegan silt loam, 0 to 2 percent slopes	29.18	18.7%		Ils	60	73
420	Tama silty clay loam, terrace, 0 to 2 percent slopes	28.56	18.3%		I	100	100
120B	Tama silty clay loam, 2 to 5 percent slopes	19.88	12.7%		Ile	95	95
1119	Muscatine silty clay loam, terrace, 0 to 2 percent slopes	18.15	11.6%		Iw	100	100
11B	Colo-Ely complex, 0 to 5 percent slopes	13.74	8.8%		Ilw	86	68
485	Spillville loam, 0 to 2 percent slopes, occasionally flooded	12.15	7.8%		Ilw	76	92
1160	Walford silt loam, terrace, 0 to 2 percent slopes	11.12	7.1%		Ilw	85	25
133	Colo silty clay loam, 0 to 2 percent slopes, occasionally flooded	8.15	5.2%		Ilw	78	80
175C	Dickinson fine sandy loam, 5 to 9 percent slopes	5.95	3.8%		IIIle	45	40
350B	Waukegan silt loam, 2 to 5 percent slopes	3.92	2.5%		Ile	55	68
1291	Atterberry silt loam, terrace, 0 to 2 percent slopes	2.56	1.6%		Iw	80	95
1688	Koszta silt loam, loamy substratum, 0 to 2 percent slopes	1.20	0.8%		Iw	88	77
178	Waukee loam, 0 to 2 percent slopes	0.64	0.4%		Ils	69	79
133	Colo silty clay loam, 0 to 2 percent slopes, occasionally flooded	0.52	0.3%		Ilw	78	80
352B	Whittier silt loam, 1 to 4 percent slopes	0.37	0.2%		Ile	50	60
315	Fluvaquents, sandy and loamy	0.14	0.1%		Vw	5	5
Weighted Average					1.72	82.5	80.8

\*\*IA has updated the CSR values for each county to CSR2.

\*c: Using Capabilities Class Dominant Condition Aggregation Method

Soils data provided by USDA and NRCS.