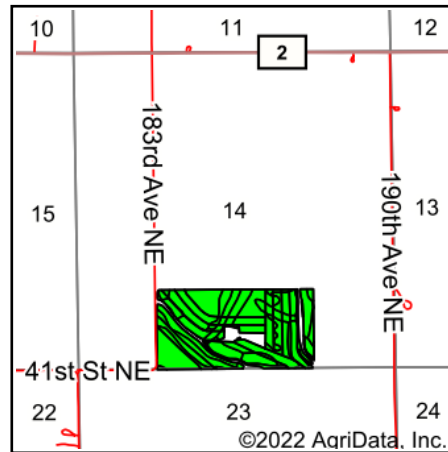
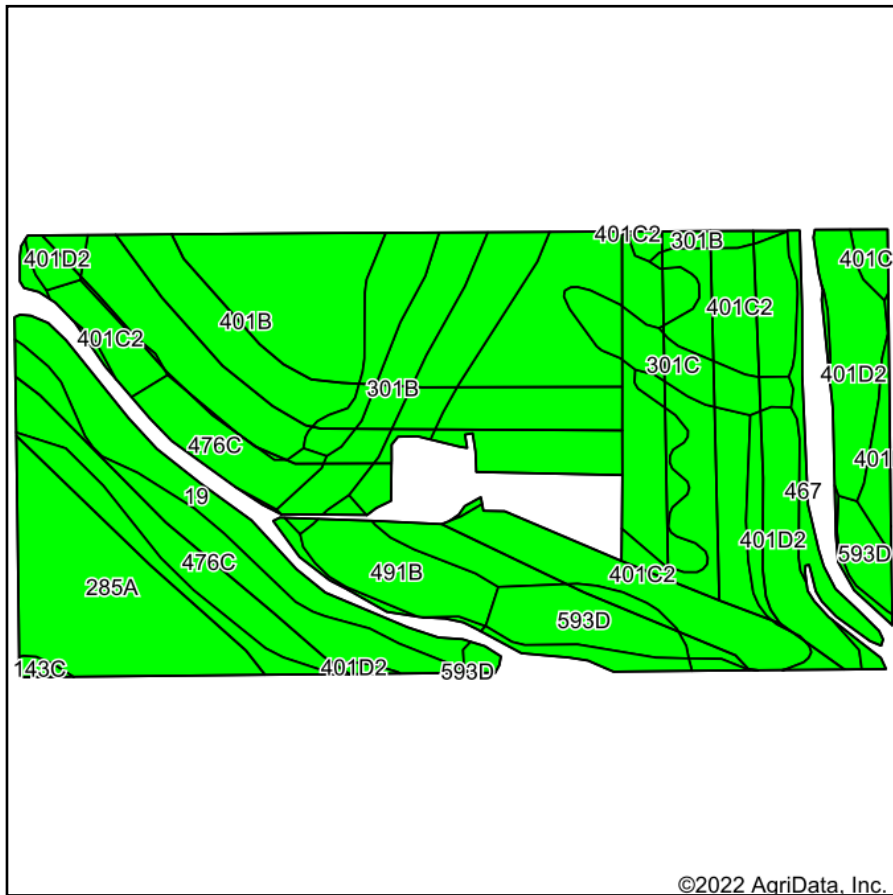


Soils Map



State: **Minnesota**
 County: **Olmsted**
 Location: **14-107N-11W**
 Township: **Quincy**
 Acres: **70.87**
 Date: **6/1/2022**



Maps Provided By:



Soils data provided by USDA and NRCS.

Area Symbol: MN109, Soil Area Version: 16

Code	Soil Description	Acres	Percent of field	PI Legend	Non-Irr Class *c	Productivity Index	Corn Bu	Soybeans Bu	
401B	Mt. Carroll silt loam, 2 to 6 percent slopes, moderately eroded	19.02	26.8%		Ile	90			
401C2	Mt. Carroll silt loam, 6 to 12 percent slopes, moderately eroded	15.65	22.1%		IIle	80			
285A	Port Byron silt loam, 0 to 2 percent slopes	7.23	10.2%		Iw	99			
476C	Frankville silt loam, 6 to 12 percent slopes	6.71	9.5%		IIIle	55	113	33	
401D2	Mt. Carroll silt loam, 12 to 20 percent slopes, moderately eroded	5.98	8.4%		IVe	67			
19	Chaseburg silt loam, moderately well drained, 0 to 2 percent slopes	3.70	5.2%		IIw	92			
301B	Lindstrom silt loam, 2 to 6 percent slopes	3.11	4.4%		Ile	99	204	59	
593D	Elbaville silt loam, 12 to 18 percent slopes	2.94	4.1%		IVe	53	109	32	
491B	Waucoma loam, 2 to 6 percent slopes	2.36	3.3%		Ile	89	183	53	
467	Sawmill silty clay loam	2.02	2.9%		IIw	79	163	47	
301C	Lindstrom silt loam, 6 to 15 percent slopes	1.99	2.8%		IIIle	92	190	55	
143C	Eleva sandy loam, 6 to 12 percent slopes	0.16	0.2%		IIIle	32	66	19	
Weighted Average						2.50	82	40.4	11.7

*c: Using Capabilities Class Dominant Condition Aggregation Method
 Soils data provided by USDA and NRCS.