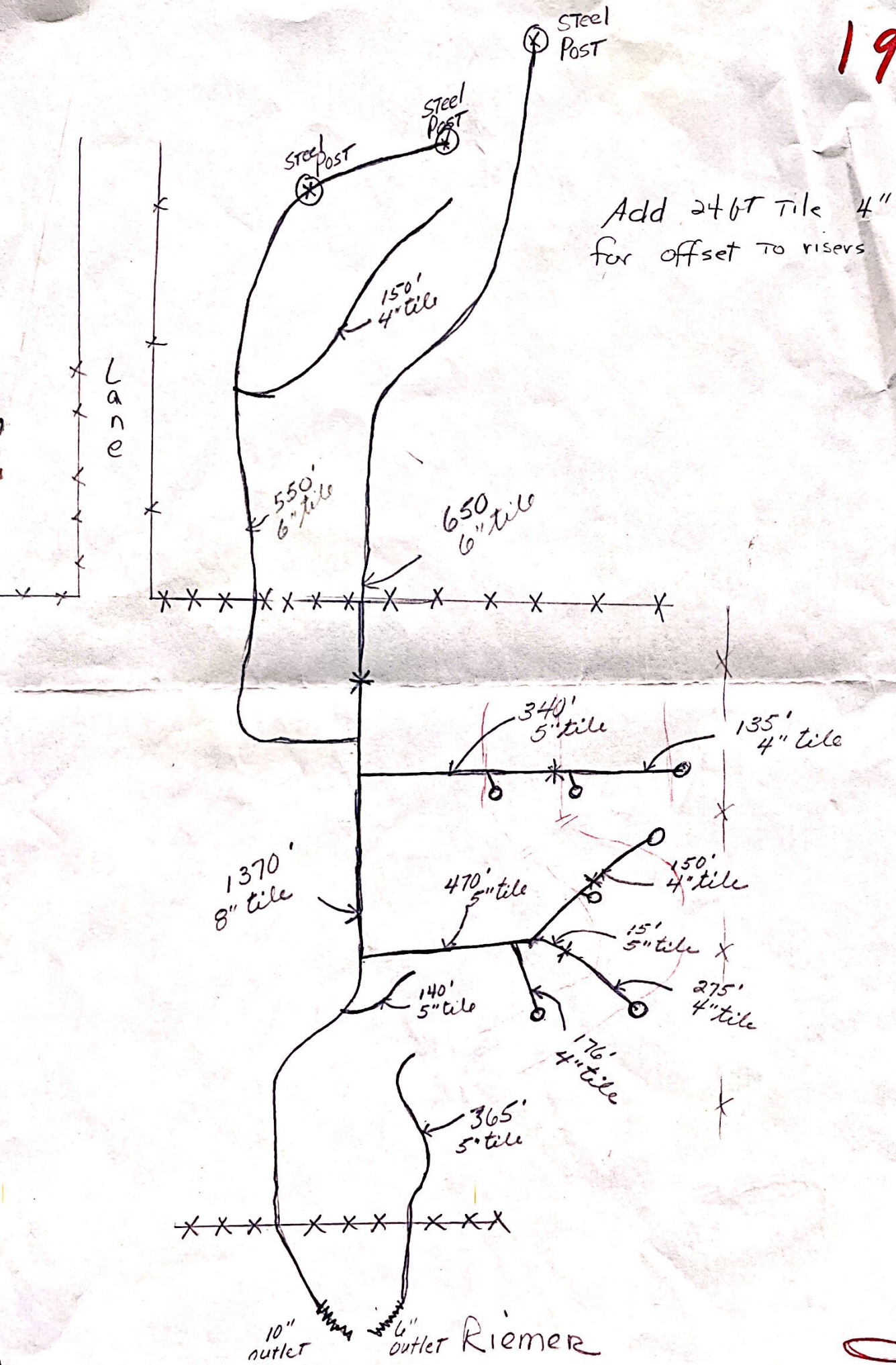
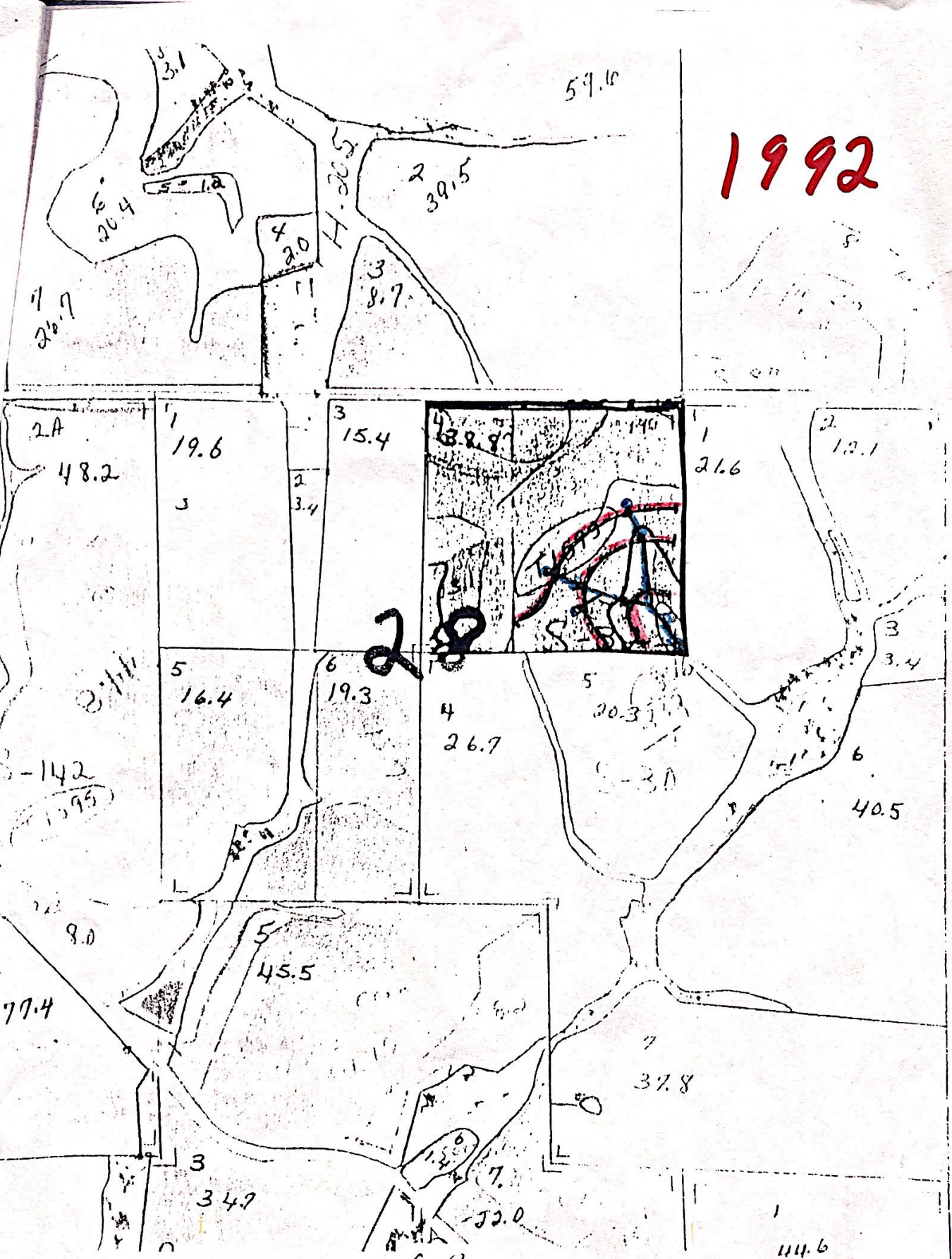


1983



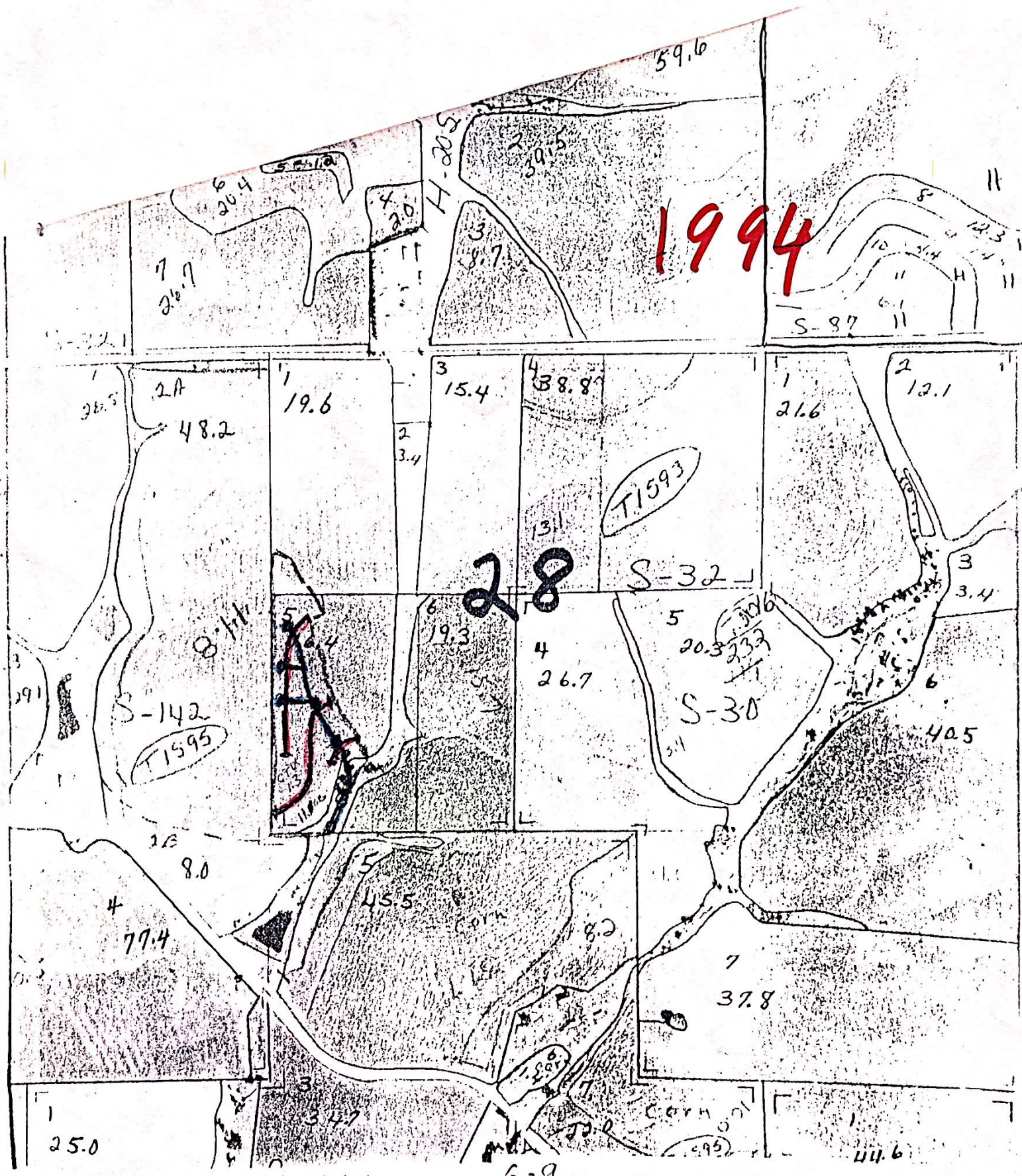
1992



28

G-9 John J. Garaghty

9/02  
S.L-31.302.1121



Roughly 7000 bushels of corn  
 1300 bushels @ 2.50/lb. = 3250.00  
 500 bushels @ 1.50/lb. = 750.00  
 1000 bushels @ 1.50/lb. = 1500.00  
 1500 bushels @ 1.50/lb. = 2250.00  
 500 bushels @ 1.50/lb. = 750.00

200' graded BB terrace  
installed 1/95

1995

Garraghty Bros. 2 ac. terracing  
= CTU 1.1 x 300/ac. =  
= CTU 1.2 600.00  
= CTU 1.3 cost estimate  
= critical area waterway seeding  
= grassed field border



HEL  
2j 6.1

39.8

HEL  
2  
12.1

HEL  
CTU 1.3  
72.4

HEL  
3  
38.8

HEL  
CTU 1.2  
35.6

HEL  
CTU 1.3  
72.4

HEL  
1  
19.0

HEL  
2  
56.2

HEL  
5  
51.6

HEL  
#2406  
T-1114

HEL  
22.0

HEL  
#1859  
T-1588

HEL  
#1752  
T-1586

HEL  
1  
25.0

1996

HEL 2  
12.1

• = CTU 1.1

• = CTU 1.2

• = CTU 1.3

↑ = critical area  
waterway seeding

} = grassed field border

2L 4.3  
2j 6.1

39.8

HEL 3

HEL 3  
T-1593

1.6

CTU 1.2  
35.6 ac  
HEL

2

HEL 1  
39.0

HEL 2  
56.2

HEL 5  
51.6

#2406  
T-1114

HEL 6  
22.0

#1859  
T-1588

31.4

#1752  
T-1586

HEL 1  
25.0

25.0

