

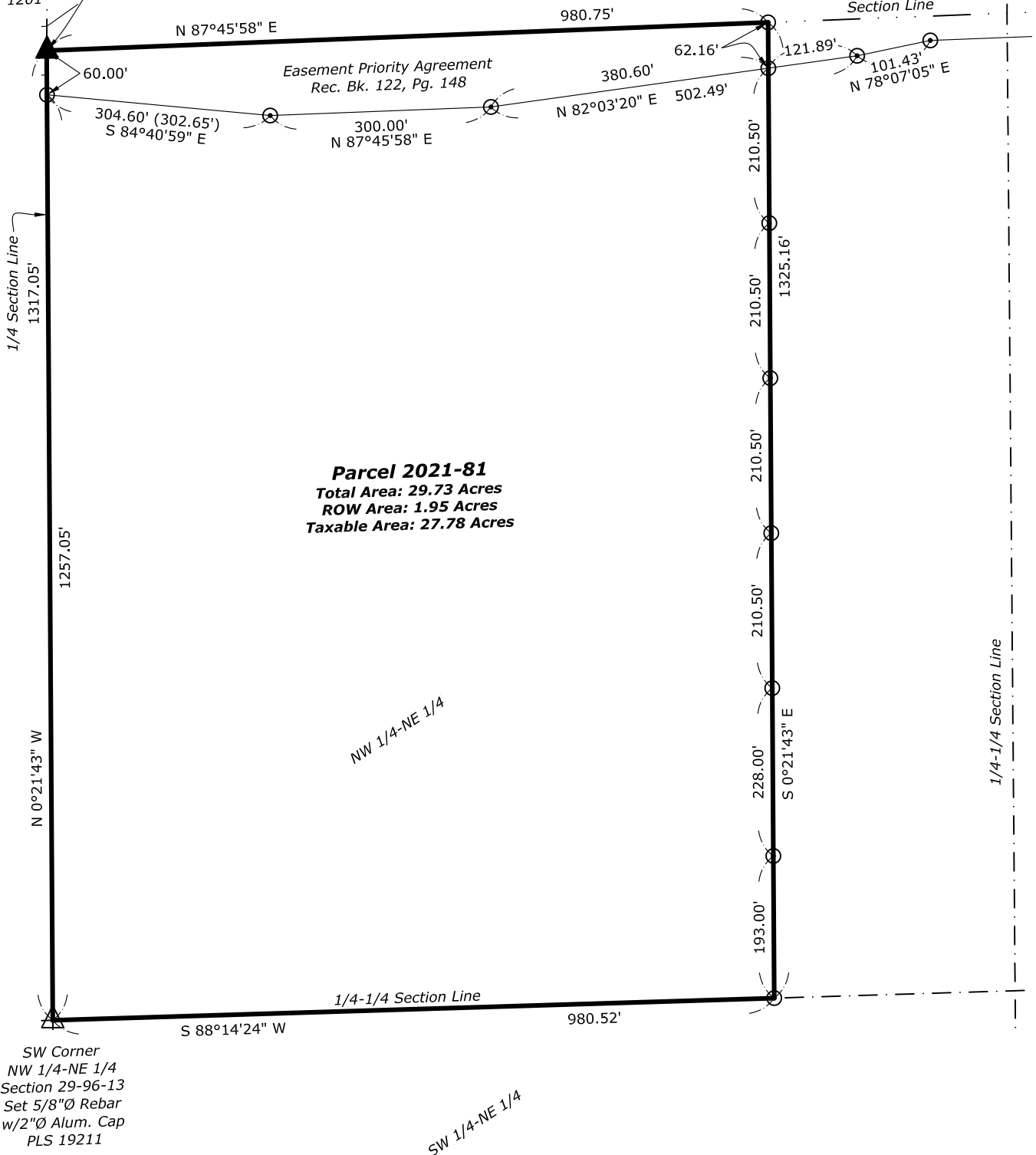
Plat of Survey

**Parcel 2021-81 in the NW 1/4 - NE 1/4 of
Section 29 - T96N - R13W, Chickasaw County, Iowa.**

N 1/4 Corner
Section 29-96-13
Fd. 1/2"Ø Rebar
Rec. Bk. 2000,
Pg. 1201

**Point of
Beginning
Parcel 2021-81**

170th Street



Scale - 1 inch = 200 ft.



LEGEND

	= Section Corner Found
	= Section Corner Set
	= Set 5/8"Ø Rebar w/OPC PLS 19211
	= Calculated Position
	= Survey Boundary Line
RPC, YPC, OPC, BPC = Red, Yellow, Orange, Blue Plastic Cap	
(0.00') = Recorded Dimension	