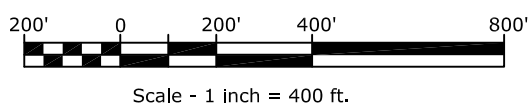
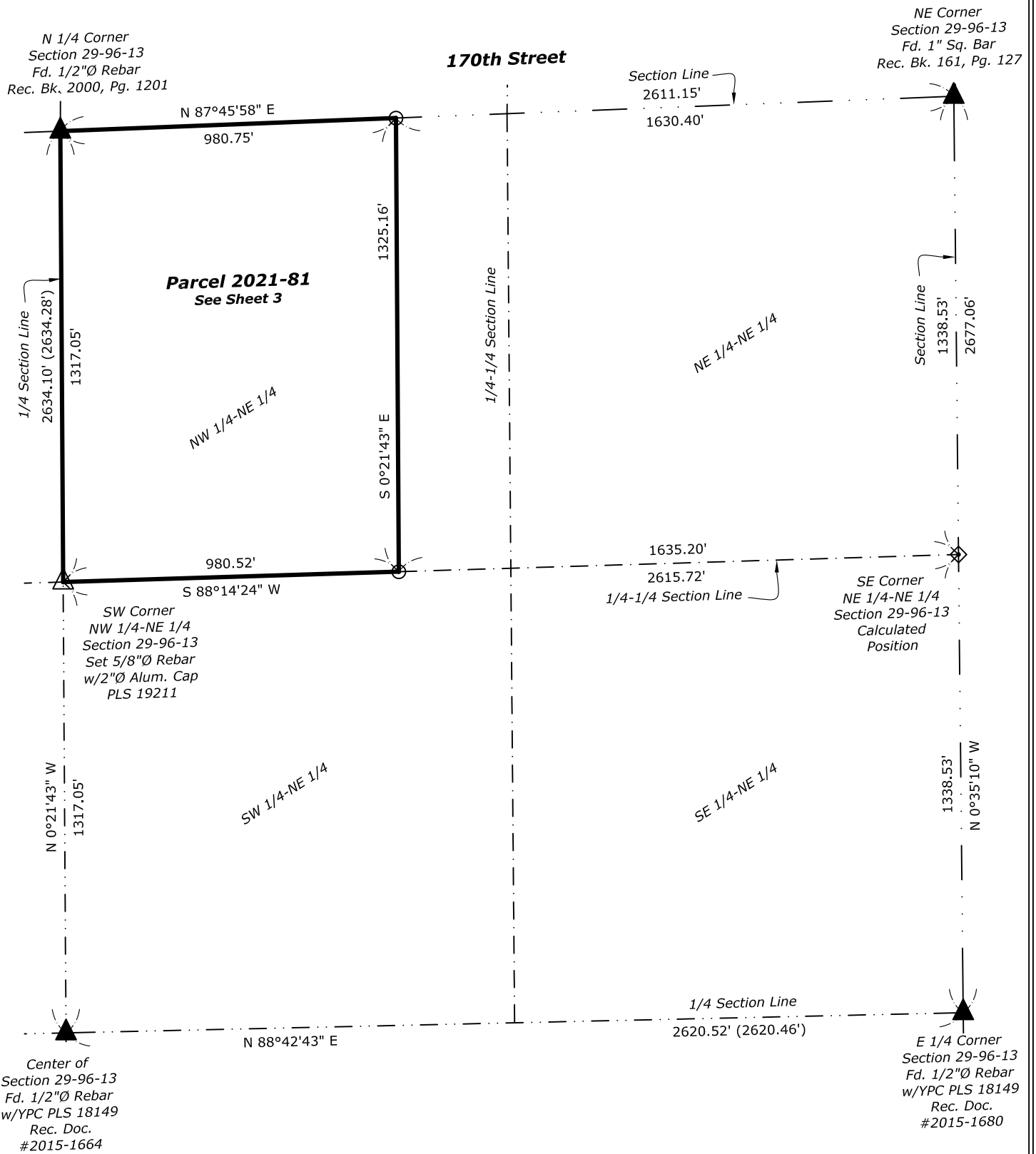


Plat of Survey

**Parcel 2021-81 in the NW 1/4 - NE 1/4 of
Section 29 - T96N - R13W, Chickasaw County, Iowa.**



LEGEND	
	= Section Corner Found
	= Section Corner Set
	= Set 5/8"Ø Rebar w/OPC PLS 19211
	= Calculated Position
	= Survey Boundary Line
RPC, YPC, OPC, BPC = Red, Yellow, Orange, Blue Plastic Cap	
(0.00') = Recorded Dimension	