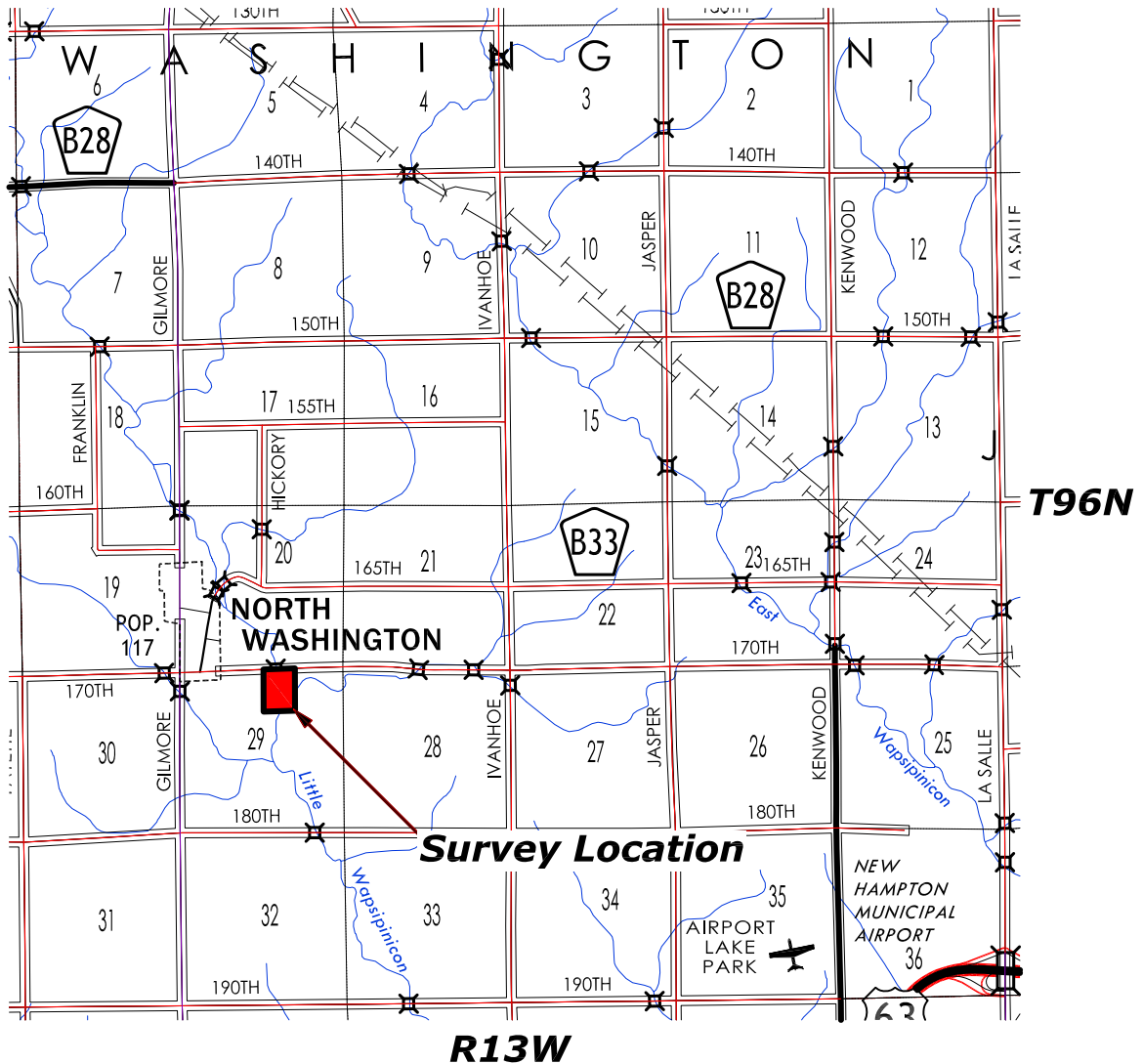


Index Legend

Prepared by & Returned to: Kirk D. Reicks, PLS 19211
HRS, LLC - 10 East Main Street, New Hampton IA 50659
Proprietor: IMAT Farm, Limited Partnership
Requested By: Nick Hopp, High Point Land Company
County: Chickasaw
Section(s)-Township-Range: 29-T96N-R13W
Aliquot Part(s): NW 1/4 - NE 1/4

Plat of Survey

Parcel 2021-81 in the NW 1/4 - NE 1/4 of Section 29 - T96N - R13W, Chickasaw County, Iowa.



Basis of Bearing:

The Coordinate Basis for this survey and the subsequent Basis of Bearing is the Iowa State Plane Coordinate System North Zone (1401) Horizontal Control NAD 83 (1996), Vertical Control NAVD88 (Geoid 96C).

Control was acquired by localizing into the Chickasaw County GPS Control System utilizing Points 219, 220, 227, 228 and projecting from the cross of 219-228 and 220-227. Scale factor 1.00007519315 applied.

Projection Point:

Northing = 3,867,816.69'
Easting = 5,213,394.79'

Notes:

See Sheet 1 for Location Map.
See Sheet 2 for Section Control.
See Sheet 3 for Survey Details.
See Sheet 4 for Legal Description.



Map Not to Scale

Map Courtesy of the Iowa Department of Transportation
<http://www.iowadot.gov/maps/>

LEGEND

	= Section Corner Found
	= Section Corner Set
	= Set 5/8"Ø Rebar w/OPC PLS 19211
	= Calculated Position
	= Survey Boundary Line
RPC, YPC, OPC, BPC = Red, Yellow, Orange, Blue Plastic Cap	
	(0.00') = Recorded Dimension

Survey was completed on December 17, 2021. | FB: Chickasaw 11, Pgs. 22-23 | LJH | Project Number: 2021-135 | Sheet: 1

Herold-Reicks Surveying

New Hampton Waverly Clear Lake
641-394-2725 319-483-5187 641-231-8092
www.hrsurveying.com



I hereby certify that this land surveying document was prepared and the related survey work was performed by me or under my direct personal supervision and that I am a duly licensed Land Surveyor under the laws of the State of Iowa.

Kirk D. Reicks Date: _____
License number 19211
My license renewal date is December 31, 2022.
Sheets covered by this seal: 1-4