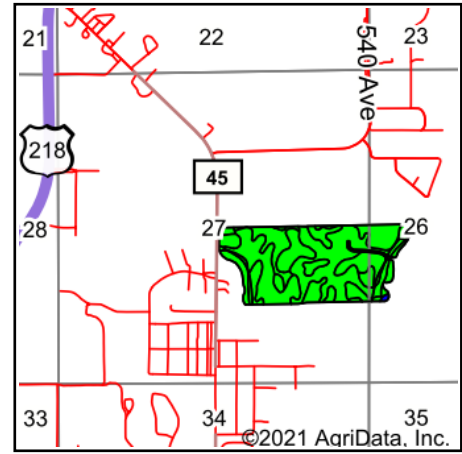
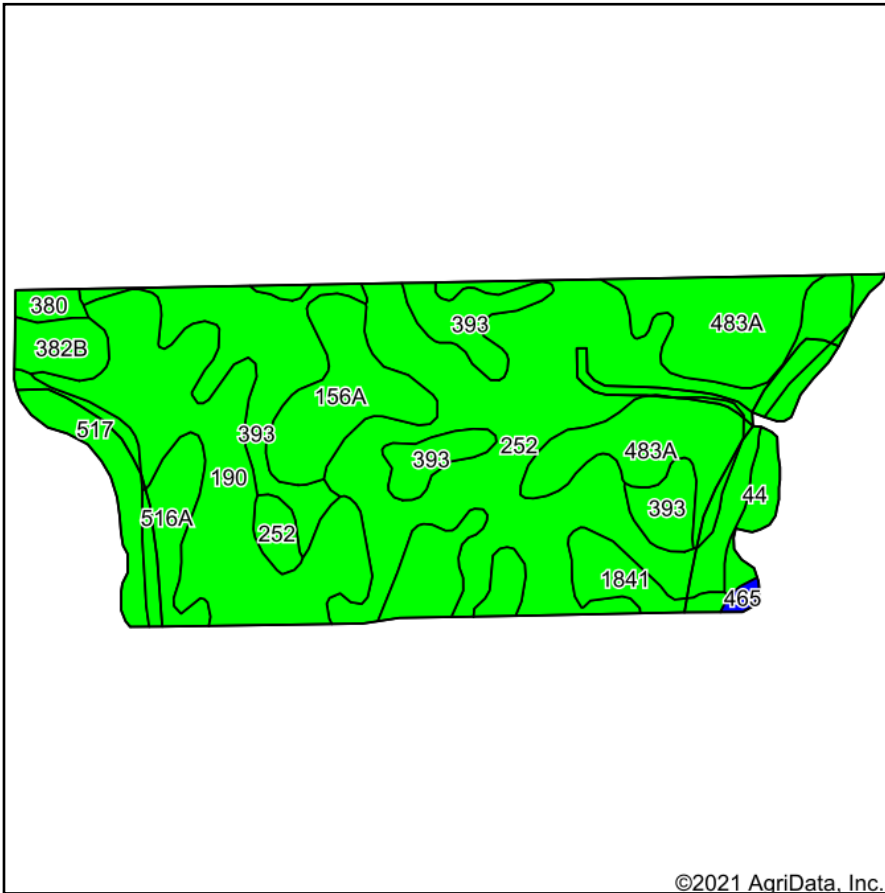


Soils Map



State: **Minnesota**
 County: **Mower**
 Location: **27-103N-18W**
 Township: **Lansing**
 Acres: **83.07**
 Date: **9/17/2021**



Maps Provided By:



Soils data provided by USDA and NRCS.

©2021 AgriData, Inc.

© AgriData, Inc. 2021

www.AgriDataInc.com

Area Symbol: MN099, Soil Area Version: 16

| Code | Soil Description | Acres | Percent of field | PI Legend | Non-Irr Class *c | Productivity Index | Alfalfa hay | Bromegrass alfalfa | Bromegrass alfalfa hay | Canarygrass ladino | Cool season grasses | Corn | Corn silage | Grass legume hay | Kentucky bluegrass |
|------|--|-------|------------------|-----------|------------------|--------------------|-------------|--------------------|------------------------|--------------------|---------------------|------|-------------|------------------|--------------------|
| 252 | Marshan clay loam, 0 to 2 percent slopes, rarely flooded | 27.30 | 32.9% | | llw | 62 | | | | | | | | | |
| 190 | Hayfield loam | 16.08 | 19.4% | | lls | 72 | | 5.3 | 4.7 | | | 155 | 16 | | |
| 393 | Udolpho silt loam | 11.36 | 13.7% | | llw | 70 | | | 4.5 | 6.4 | | 151 | 16 | | |
| 483A | Waukee loam, 0 to 2 percent slopes | 10.92 | 13.1% | | lls | 69 | | | | | | | | | |
| 156A | Fairhaven silt loam, 0 to 2 percent slopes | 5.00 | 6.0% | | lls | 78 | | 4.5 | 5.8 | | | 168 | | | 3 |
| 517 | Shandep clay loam | 3.05 | 3.7% | | lllw | 78 | | 4.8 | 3.7 | | | 168 | | | 2 |
| 516A | Dowagiac loam, 0 to 2 percent slopes | 2.85 | 3.4% | | lls | 66 | 3.5 | | 4.7 | | | 142 | 16 | | |
| 1841 | Hayfield loam, loamy substratum | 2.02 | 2.4% | | lls | 79 | | 5.3 | 4.5 | | | 170 | 15 | | |
| 44 | Ankeny fine sandy loam | 1.81 | 2.2% | | lls | 91 | | 5.6 | 6 | | | 196 | | | |
| 382B | Blooming silt loam, 2 to 6 percent slopes | 1.72 | 2.1% | | lle | 91 | | 4.5 | 6.3 | | | 196 | | 4.5 | |



| | | | | | | | | | | | | | | | | |
|-------------------------|--------------------------------------|------|------|--|-----|-------------|------------|------------|------------|------------|-----------|-----------|------------|------------|----------|---|
| 380 | Havana silt loam | 0.70 | 0.8% | | llw | 94 | | 6 | 4.8 | | | 202 | | | | 4 |
| 465 | Kalmarville loam, frequently flooded | 0.26 | 0.3% | | Vw | 20 | | | | | | 3 | | | | |
| Weighted Average | | | | | | 69.4 | 0.1 | 1.9 | 2.6 | 0.9 | *- | 86 | 6.2 | 0.1 | 1 | |

*c: Using Capabilities Class Dominant Condition Aggregation Method
 Soils data provided by USDA and NRCS.